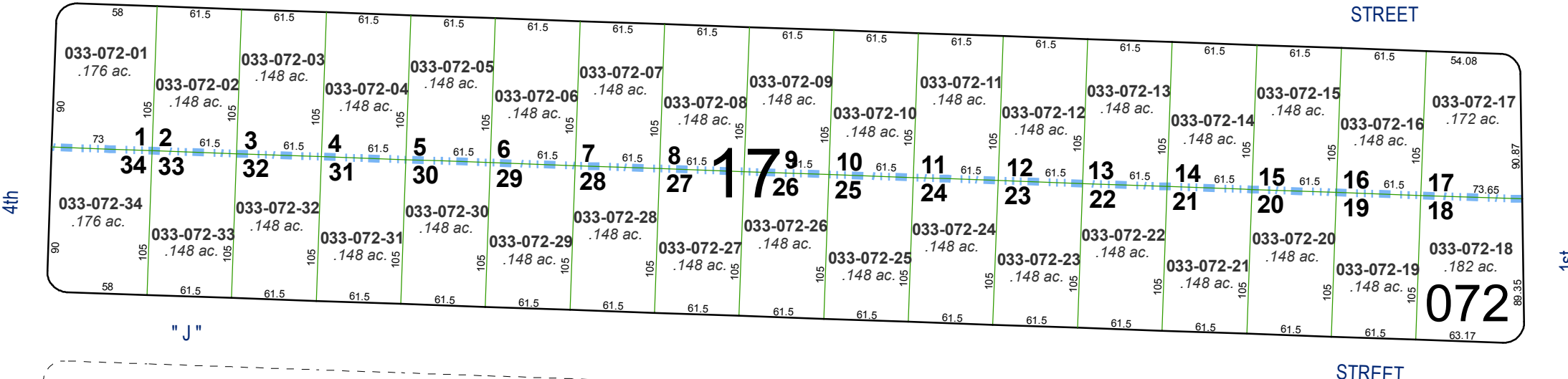
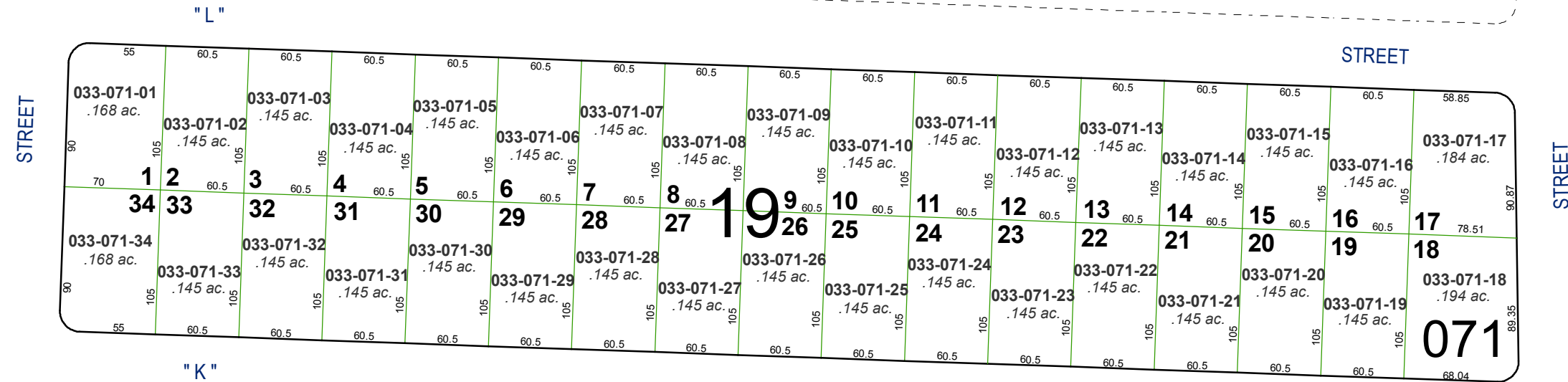


(#473)
GREENBRAE TERRACE SUB.
ADDITION NO. 4

A POR. OF THE NW ¼ OF SEC. 4
 T19N - R20E



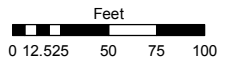
(#471)
GREENBRAE TERRACE SUB.
ADDITION NO. 3

Assessor's Map Number

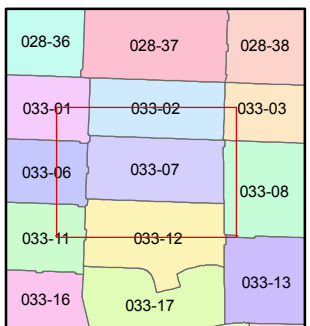
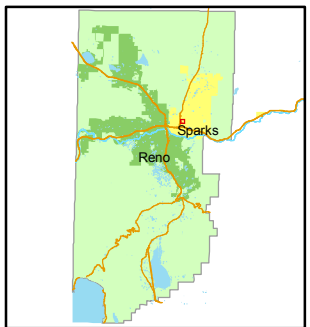
033-07

STATE OF NEVADA
WASHOE COUNTY
ASSESSOR'S OFFICE
 Joshua G. Wilson, Assessor

1001 East Ninth Street
 Building D
 Reno, Nevada 89512
 (775) 328-2231



1 inch = 100 feet



created by: NLH 11/22/2010

last updated: _____

area previously shown on map(s)

NOTE: This map was prepared for the use of the Washoe County Assessor for assessment and illustrative purposes only. It does not represent a survey of the premises. No liability is assumed as to the sufficiency or accuracy of the data delineated herein.