

032-36-S8

AVENUE OF THE OAKS

C STREET

(#5139) FOUNTAINHOUSE AT VICTORIAN SQUARE A CONDOMINIUM SUBDIVISION

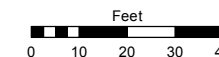
POR. OF SE ¼ SECTION 5
T19N - R20E

Assessor's Map Number

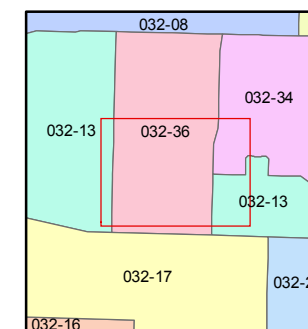
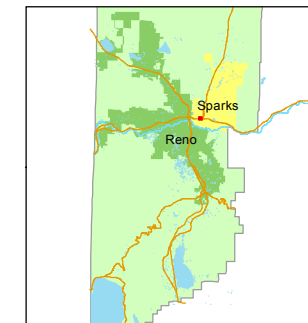
032-36-S5

STATE OF NEVADA
WASHOE COUNTY
ASSESSOR'S OFFICE
Michael E. Clark, Assessor

1001 East Ninth Street
Building D
Reno, Nevada 89512
(775) 328-2231



1 inch = 40 feet



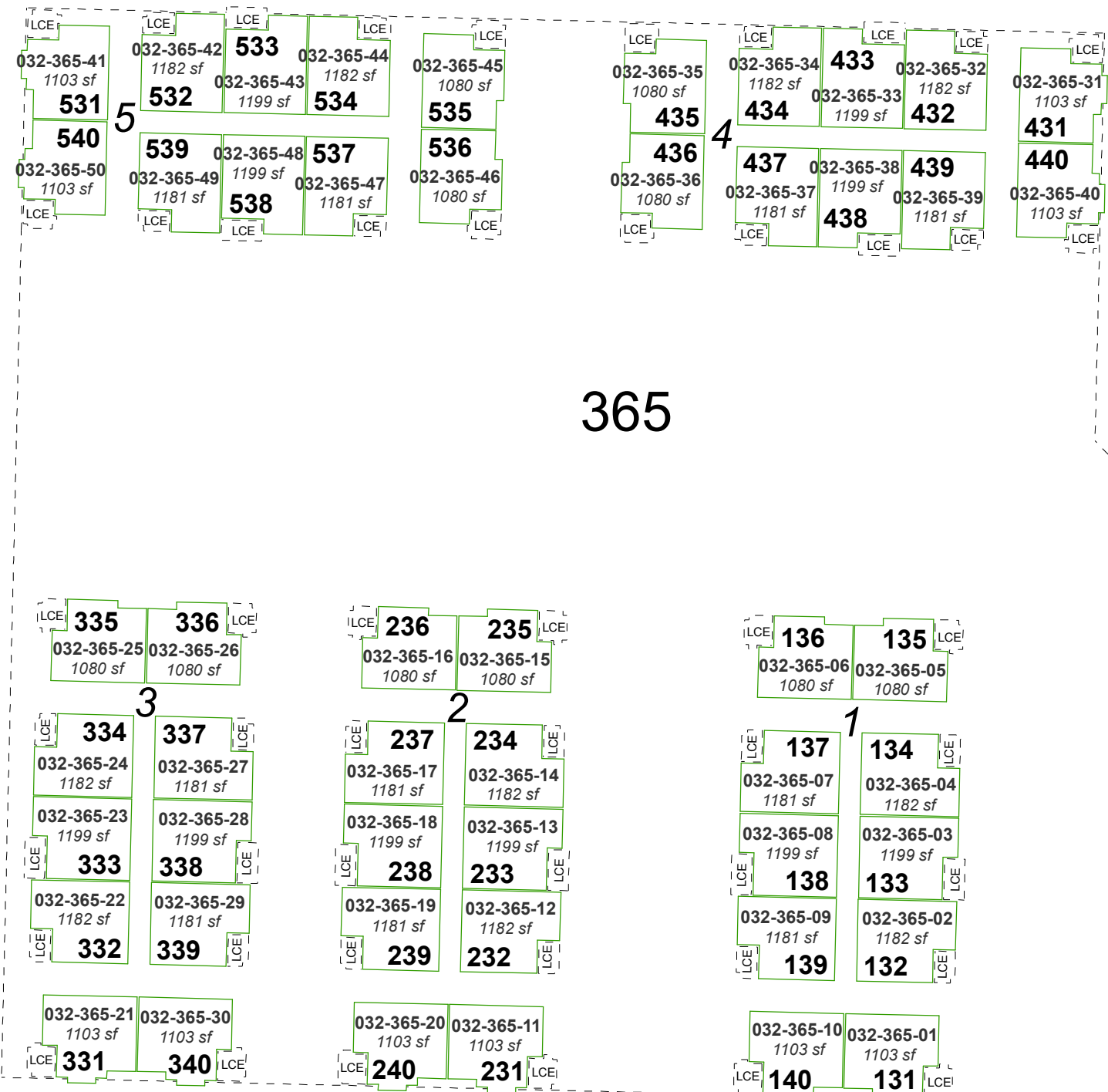
created by: KSB 12/28/2015

last updated: _____

area previously shown on map(s)

032-13, 032-34

NOTE: This map was prepared for the use of the Washoe County Assessor for assessment and illustrative purposes only. It does not represent a survey of the premises. No liability is assumed as to the sufficiency or accuracy of the data delineated hereon.

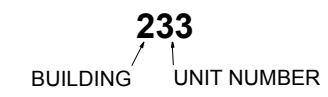


THIRD FLOOR

2 = BUILDING

LCE = LIMITED COMMON ELEMENT
See Page 032-36 for Common Elements.

See Page 032-36-S1 & 032-36-S2 for unit details.



365

VICTORIAN CIRCLE
PLAZA
VICTORIAN

13 th STREET

VICTORIAN AVENUE