

032-36-S6

AVENUE OF THE OAKS

C STREET

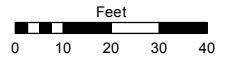
# (#5139) FOUNTAINHOUSE AT VICTORIAN SQUARE A CONDOMINIUM SUBDIVISION

POR. OF SE ¼ SECTION 5  
T19N - R20E

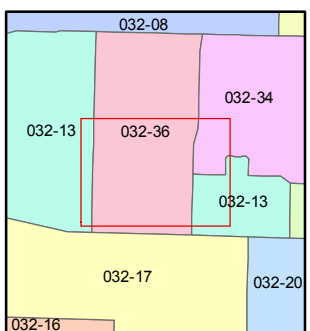
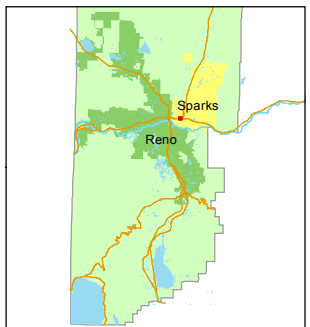
Assessor's Map Number  
**032-36-S3**

STATE OF NEVADA  
**WASHOE COUNTY**  
ASSESSOR'S OFFICE  
Michael E. Clark, Assessor

1001 East Ninth Street  
Building D  
Reno, Nevada 89512  
(775) 328-2231



1 inch = 40 feet



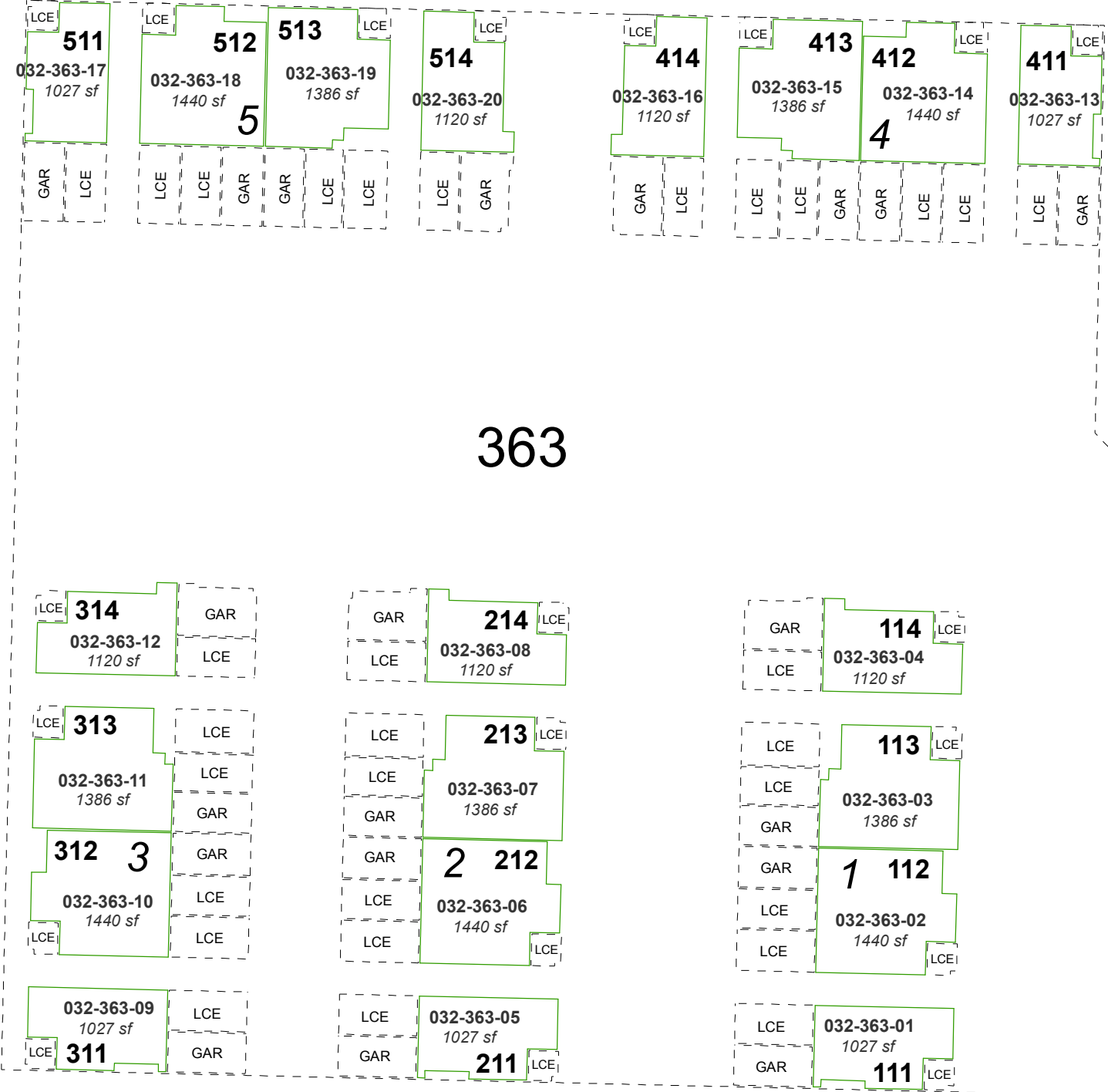
created by: KSB 12/28/2015

last updated: \_\_\_\_\_

area previously shown on map(s)

032-13, 032-34

NOTE: This map was prepared for the use of the Washoe County Assessor for assessment and illustrative purposes only. It does not represent a survey of the premises. No liability is assumed as to the sufficiency or accuracy of the data delineated hereon.



## FIRST FLOOR

**2** = BUILDING

GAR = GARAGE

LCE = LIMITED COMMON ELEMENT

See Page 032-36 for Common Elements.

See Page 032-36-S1 & 032-36-S2 for unit details.

**212**  
BUILDING UNIT NUMBER

VICTORIAN CIRCLE  
PLAZA  
CIRCLE

363

13<sup>th</sup> STREET

VICTORIAN AVENUE