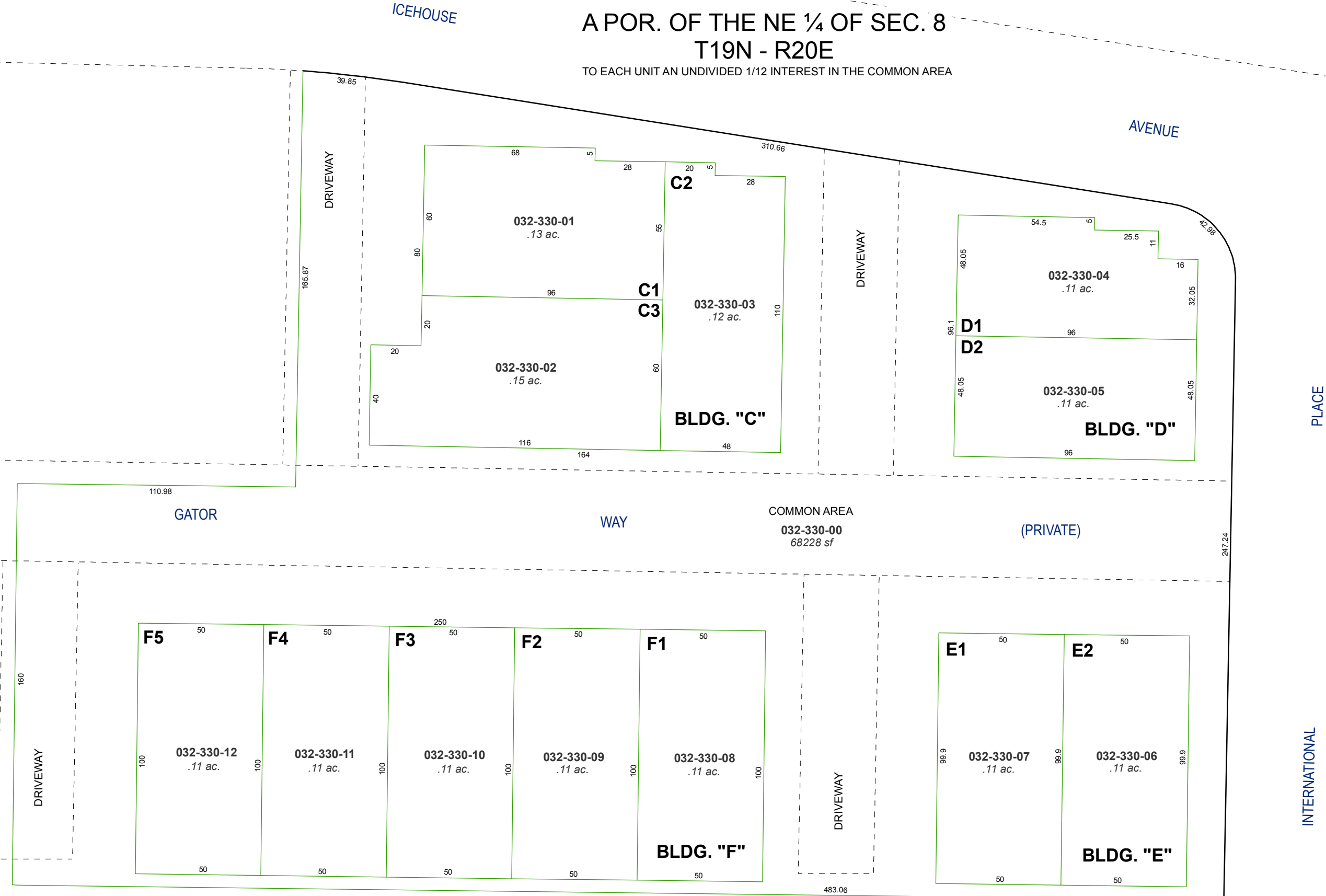


(#1982)
GATOR PARK - UNIT ONE

A POR. OF THE NE ¼ OF SEC. 8
T19N - R20E

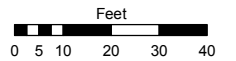
TO EACH UNIT AN UNDIVIDED 1/12 INTEREST IN THE COMMON AREA



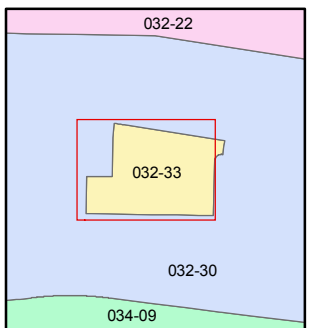
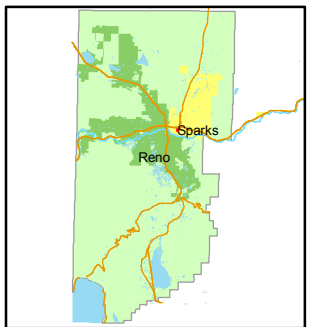
Assessor's Map Number
032-33

STATE OF NEVADA
WASHOE COUNTY
ASSESSOR'S OFFICE
Joshua G. Wilson, Assessor

1001 East Ninth Street
Building D
Reno, Nevada 89512
(775) 328-2231



1 inch = 40 feet



created by: NLH 10/27/2010

last updated: _____

area previously shown on map(s)

NOTE: This map was prepared for the use of the Washoe County Assessor for assessment and illustrative purposes only. It does not represent a survey of the premises. No liability is assumed as to the sufficiency or accuracy of the data delineated herein.