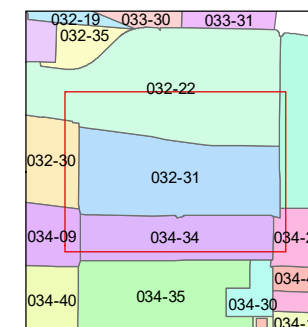
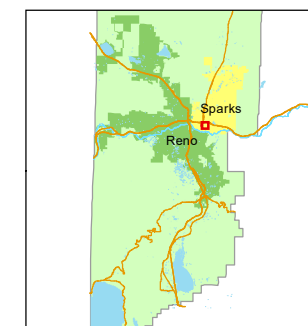


1 inch = 200 feet



created by: NLH 10/27/2010

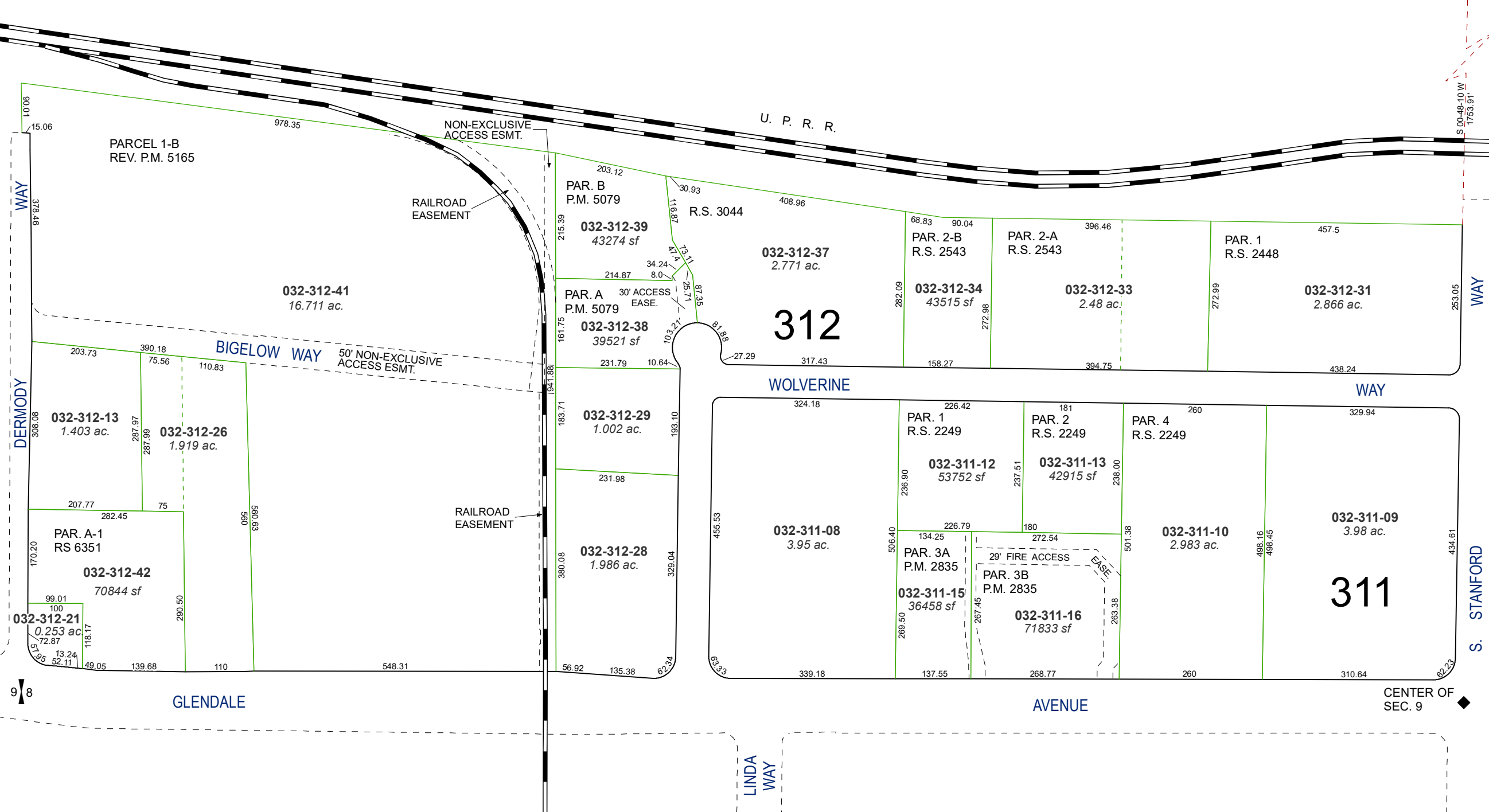
updated: EMG 6/19/15 EMG 6/23/15

JRA 4/13/22

area previously shown on map(s):

NOTE: This map was prepared for the use of the Washoe County Assessor for assessment and illustrative purposes only. It does not represent a survey of the premises. No liability is assumed as to the sufficiency or accuracy of the data delineated hereon.

A POR. OF THE NW ¼ OF SEC. 9  
T19N - R20E



**312**

**311**

4  
9

9  
8

S 00-48-10 W  
1753.91

WAY

S. STANFORD WAY

LINDA WAY

CENTER OF SEC. 9

U. P. R. R.

WOLVERINE WAY

GLENDALE

BIGELOW WAY

DERMODY WAY

PARCEL 1-B  
REV. P.M. 5165

NON-EXCLUSIVE ACCESS ESMT.

RAILROAD EASEMENT

50' NON-EXCLUSIVE ACCESS ESMT.

RAILROAD EASEMENT

29' FIRE ACCESS EASE.

PAR. B  
P.M. 5079

PAR. A  
P.M. 5079

PAR. 1  
R.S. 2249

PAR. 3A  
P.M. 2835

PAR. 2  
R.S. 2249

PAR. 3B  
P.M. 2835

PAR. 4  
R.S. 2249

PAR. 1  
R.S. 2448

PAR. 2-B  
R.S. 2543

PAR. 2-A  
R.S. 2543

032-312-39  
43274 sf

032-312-38  
39521 sf

032-312-37  
2.771 ac.

032-312-34  
43515 sf

032-312-33  
2.48 ac.

032-312-31  
2.866 ac.

032-312-13  
1.403 ac.

032-312-26  
1.919 ac.

032-312-29  
1.002 ac.

032-312-28  
1.986 ac.

032-311-08  
3.95 ac.

032-311-12  
53752 sf

032-311-13  
42915 sf

032-311-10  
2.983 ac.

032-311-09  
3.98 ac.

PAR. A-1  
RS 6351

032-312-21  
0.253 ac

032-312-42  
70844 sf

032-312-26  
1.919 ac.

032-312-29  
1.002 ac.

032-312-28  
1.986 ac.

032-311-08  
3.95 ac.

032-311-12  
53752 sf

032-311-13  
42915 sf

032-311-10  
2.983 ac.

032-311-09  
3.98 ac.

PAR. A-1  
RS 6351

032-312-21  
0.253 ac

032-312-42  
70844 sf

032-312-26  
1.919 ac.

032-312-29  
1.002 ac.

032-312-28  
1.986 ac.

032-311-08  
3.95 ac.

032-311-12  
53752 sf

032-311-13  
42915 sf

032-311-10  
2.983 ac.

032-311-09  
3.98 ac.

PAR. A-1  
RS 6351

032-312-21  
0.253 ac

032-312-42  
70844 sf

032-312-26  
1.919 ac.

032-312-29  
1.002 ac.

032-312-28  
1.986 ac.

032-311-08  
3.95 ac.

032-311-12  
53752 sf

032-311-13  
42915 sf

032-311-10  
2.983 ac.

032-311-09  
3.98 ac.

PAR. A-1  
RS 6351

032-312-21  
0.253 ac

032-312-42  
70844 sf

032-312-26  
1.919 ac.

032-312-29  
1.002 ac.

032-312-28  
1.986 ac.

032-311-08  
3.95 ac.

032-311-12  
53752 sf

032-311-13  
42915 sf

032-311-10  
2.983 ac.

032-311-09  
3.98 ac.

PAR. A-1  
RS 6351

032-312-21  
0.253 ac

032-312-42  
70844 sf

032-312-26  
1.919 ac.

032-312-29  
1.002 ac.

032-312-28  
1.986 ac.

032-311-08  
3.95 ac.

032-311-12  
53752 sf

032-311-13  
42915 sf

032-311-10  
2.983 ac.

032-311-09  
3.98 ac.

PAR. A-1  
RS 6351

032-312-21  
0.253 ac

032-312-42  
70844 sf

032-312-26  
1.919 ac.

032-312-29  
1.002 ac.

032-312-28  
1.986 ac.

032-311-08  
3.95 ac.

032-311-12  
53752 sf

032-311-13  
42915 sf

032-311-10  
2.983 ac.

032-311-09  
3.98 ac.

PAR. A-1  
RS 6351

032-312-21  
0.253 ac

032-312-42  
70844 sf

032-312-26  
1.919 ac.

032-312-29  
1.002 ac.

032-312-28  
1.986 ac.

032-311-08  
3.95 ac.

032-311-12  
53752 sf

032-311-13  
42915 sf

032-311-10  
2.983 ac.

032-311-09  
3.98 ac.

PAR. A-1  
RS 6351

032-312-21  
0.253 ac

032-312-42  
70844 sf

032-312-26  
1.919 ac.

032-312-29  
1.002 ac.

032-312-28  
1.986 ac.

032-311-08  
3.95 ac.

032-311-12  
53752 sf

032-311-13  
42915 sf

032-311-10  
2.983 ac.

032-311-09  
3.98 ac.

PAR. A-1  
RS 6351

032-312-21  
0.253 ac

032-312-42  
70844 sf

032-312-26  
1.919 ac.

032-312-29  
1.002 ac.

032-312-28  
1.986 ac.

032-311-08  
3.95 ac.

032-311-12  
53752 sf

032-311-13  
42915 sf

032-311-10  
2.983 ac.

032-311-09  
3.98 ac.

PAR. A-1  
RS 6351

032-312-21  
0.253 ac

032-312-42  
70844 sf

032-312-26  
1.919 ac.

032-312-29  
1.002 ac.

032-312-28  
1.986 ac.

032-311-08  
3.95 ac.

032-311-12  
53752 sf

032-311-13  
42915 sf

032-311-10  
2.983 ac.

032-311-09  
3.98 ac.

PAR. A-1  
RS 6351

032-312-21  
0.253 ac

032-312-42  
70844 sf

032-312-26  
1.919 ac.

032-312-29  
1.002 ac.

032-312-28  
1.986 ac.

032-311-08  
3.95 ac.

032-311-12  
53752 sf

032-311-13  
42915 sf

032-311-10  
2.983 ac.

032-311-09  
3.98 ac.

PAR. A-1  
RS 6351

032-312-21  
0.253 ac

032-312-42  
70844 sf

032-312-26  
1.919 ac.

032-312-29  
1.002 ac.

032-312-28  
1.986 ac.

032-311-08  
3.95 ac.

032-311-12  
53752 sf

032-311-13  
42915 sf

032-311-10  
2.983 ac.

032-311-09  
3.98 ac.

PAR. A-1  
RS 6351

032-312-21  
0.253 ac

032-312-42  
70844 sf

032-312-26  
1.919 ac.

032-312-29  
1.002 ac.

032-312-28  
1.986 ac.

032-311-08  
3.95 ac.

032-311-12  
53752 sf

032-311-13  
42915 sf

032-311-10  
2.983 ac.

032-311-09  
3.98 ac.

PAR. A-1  
RS 6351

032-312-21  
0.253 ac

032-312-42  
70844 sf

032-312-26  
1.919 ac.

032-312-29  
1.002 ac.

032-312-28  
1.986 ac.

032-311-08  
3.95 ac.

032-311-12  
53752 sf

032-311-13  
42915 sf

032-311-10  
2.983 ac.

032-311-09  
3.98 ac.

PAR. A-1  
RS 6351

032-312-21  
0.253 ac

032-312-42  
70844 sf

032-312-26  
1.919 ac.

032-312-29  
1.002 ac.

032-312-28  
1.986 ac.

032-311-08  
3.95 ac.

032-311-12  
53752 sf

032-311-13  
42915 sf

032-311-10  
2.983 ac.

032-311-09  
3.98 ac.

PAR. A-1  
RS 6351

032-312-21  
0.253 ac

032-312-42  
70844 sf

032-312-26  
1.919 ac.

032-312-29  
1.002 ac.

032-312-28  
1.986 ac.

032-311-08  
3.95 ac.

032-311-12  
53752 sf

032-311-13  
42915 sf

032-311-10  
2.983 ac.

032-311-09  
3.98 ac.

PAR. A-1  
RS 6351

032-312-21  
0.253 ac

032-312-42  
70844 sf

032-312-26  
1.919 ac.

032-312-29  
1.002 ac.

032-312-28  
1.986 ac.

032-311-08  
3.95 ac.