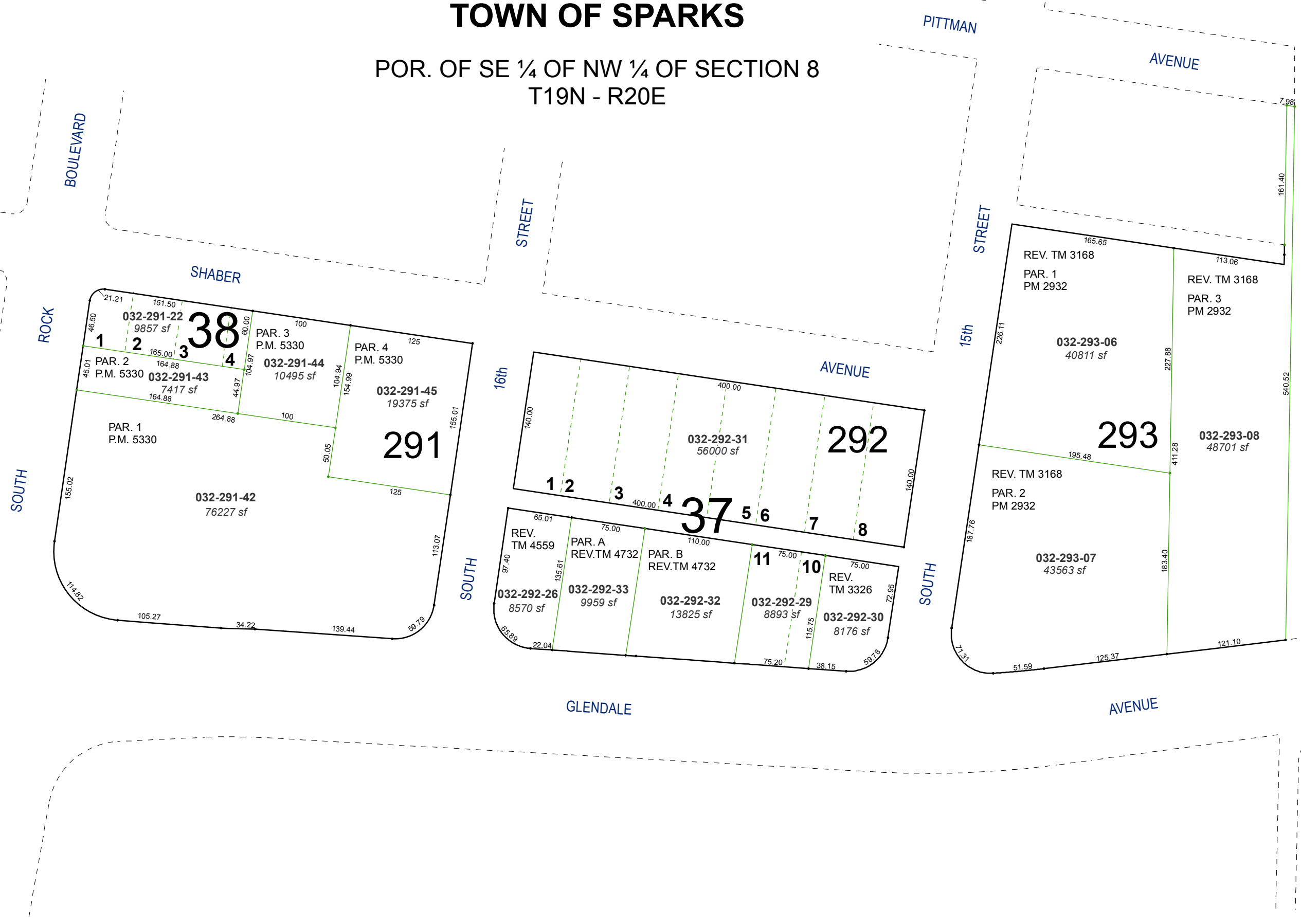


# (#117) TOWN OF SPARKS

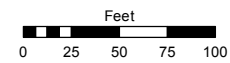
POR. OF SE ¼ OF NW ¼ OF SECTION 8  
T19N - R20E



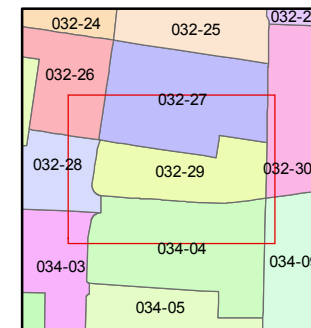
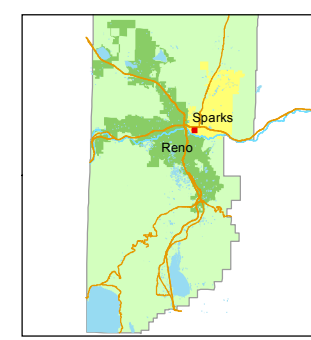
Assessor's Map Number  
**032-29**

STATE OF NEVADA  
**WASHOE COUNTY**  
ASSESSOR'S OFFICE  
Michael E. Clark, Assessor

1001 East Ninth Street  
Building D  
Reno, Nevada 89512  
(775) 328-2231



1 inch = 100 feet



created by: NLH 10/20/2010  
last updated: KSB 4/10/17 JKF 2/23/18

area previously shown on map(s)

NOTE: This map was prepared for the use of the Washoe County Assessor for assessment and illustrative purposes only. It does not represent a survey of the premises. No liability is assumed as to the sufficiency or accuracy of the data delineated hereon.