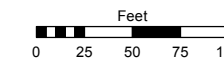


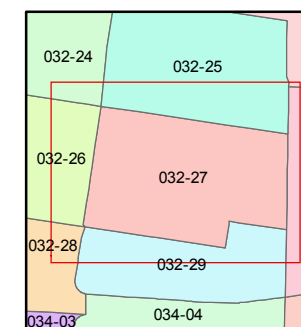
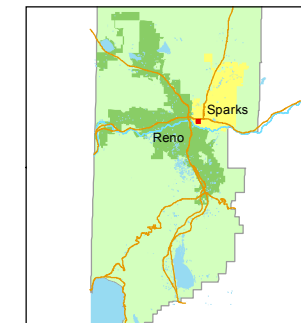
(#117)  
TOWN OF SPARKS  
A POR. OF THE NW 1/4 OF SEC. 8  
T19N - R20E

STATE OF NEVADA  
WASHOE COUNTY  
ASSESSOR'S OFFICE  
Joshua G. Wilson, Assessor

1001 East Ninth Street  
Building D  
Reno, Nevada 89512  
(775) 328-2231



1 inch = 100 feet



created by: NLH 10/19/2010

last updated: CFB 11/27/2013

area previously shown on map(s)

NOTE: This map was prepared for the use of the Washoe County Assessor for assessment and illustrative purposes only. It does not represent a survey of the premises. No liability is assumed as to the sufficiency or accuracy of the data delineated hereon.

