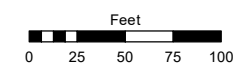
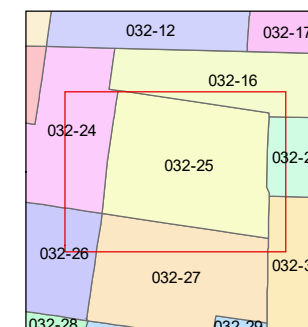
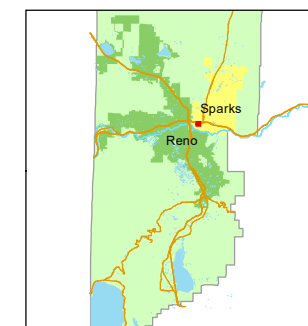


STATE OF NEVADA  
**WASHOE COUNTY**  
ASSESSOR'S OFFICE

1001 East Ninth Street, Building D  
Reno, Nevada 89512  
(775) 328-2231



1 inch = 100 feet



created by: NLH 10/18/2010

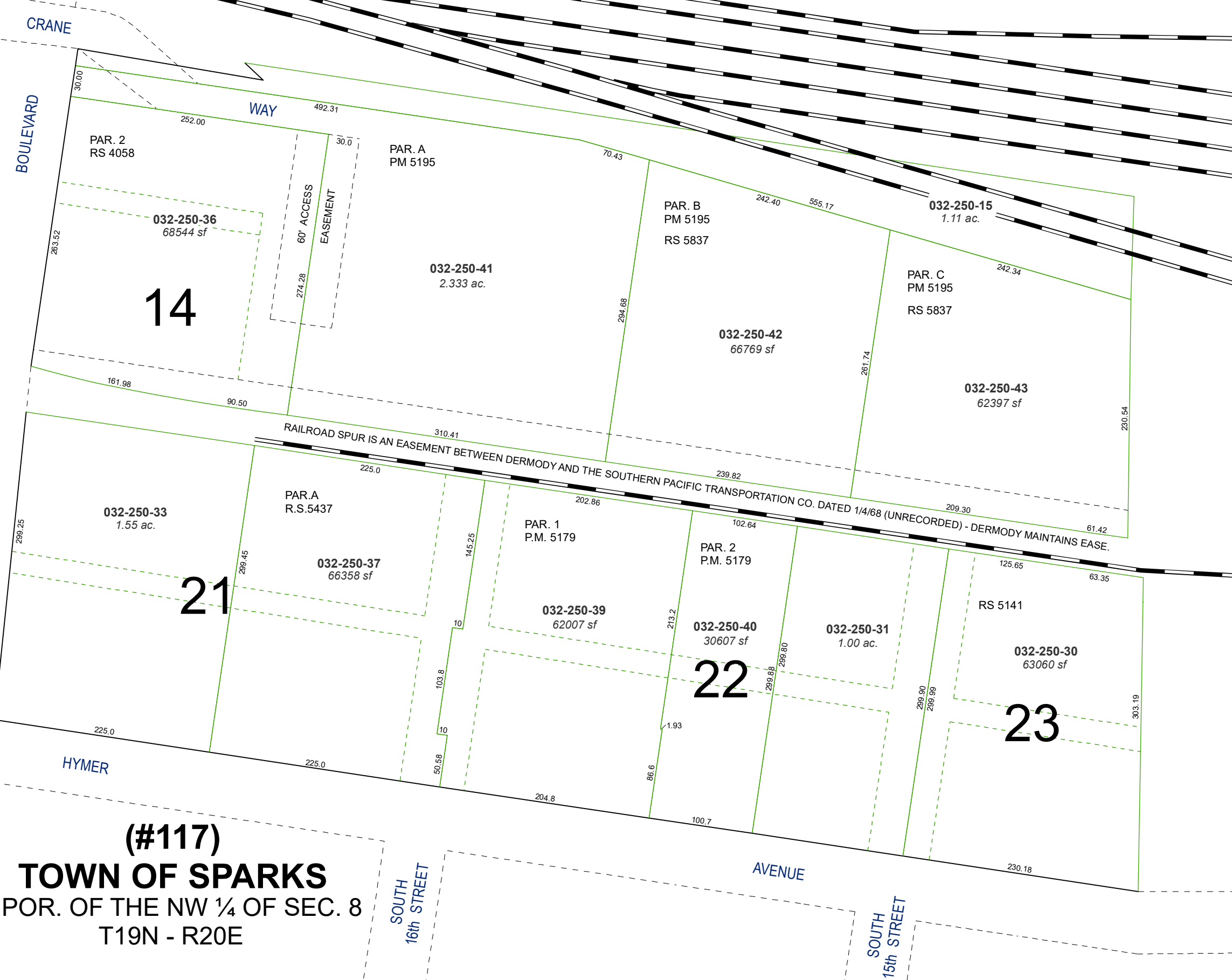
updated: EMG 8/24/15 KSB 1/08/16

JRA 7/30/21

area previously shown on map(s):

NOTE: This map was prepared for the use of the Washoe County Assessor for assessment and illustrative purposes only. It does not represent a survey of the premises. No liability is assumed as to the sufficiency or accuracy of the data delineated hereon.

*Southern Pacific Transportation R/W  
and Freight Marshalling Yard*



**(#117)**  
**TOWN OF SPARKS**  
A POR. OF THE NW ¼ OF SEC. 8  
T19N - R20E

SOUTH  
16th STREET

SOUTH  
15th STREET

CRANE

BOULEVARD

WAY

60' ACCESS  
EASEMENT

14

21

22

23

FRAZER  
AVENUE

ROCK

SOUTH

HYMER

AVENUE