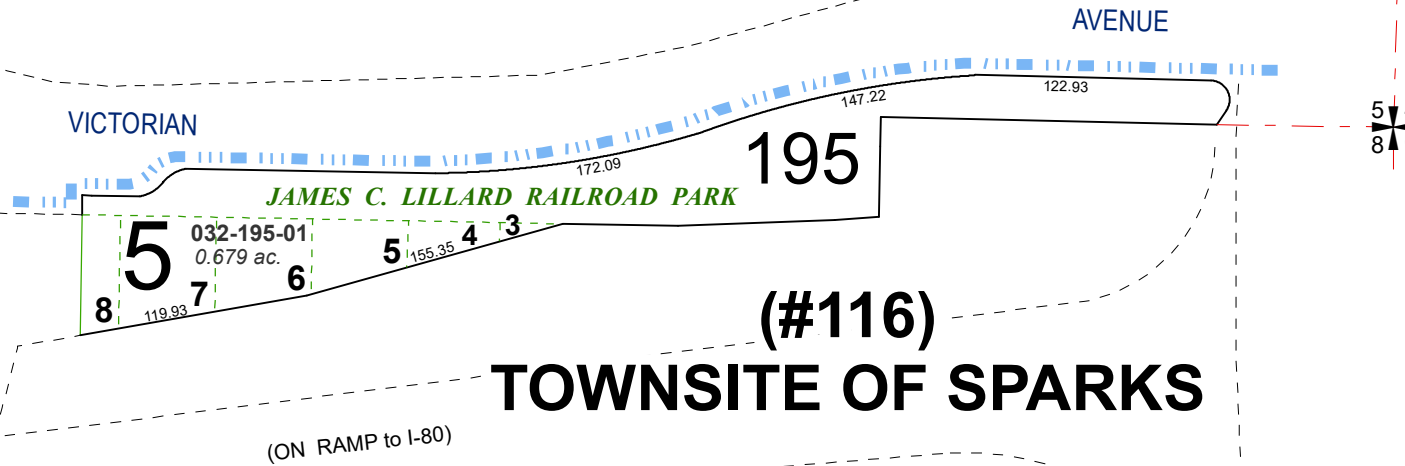
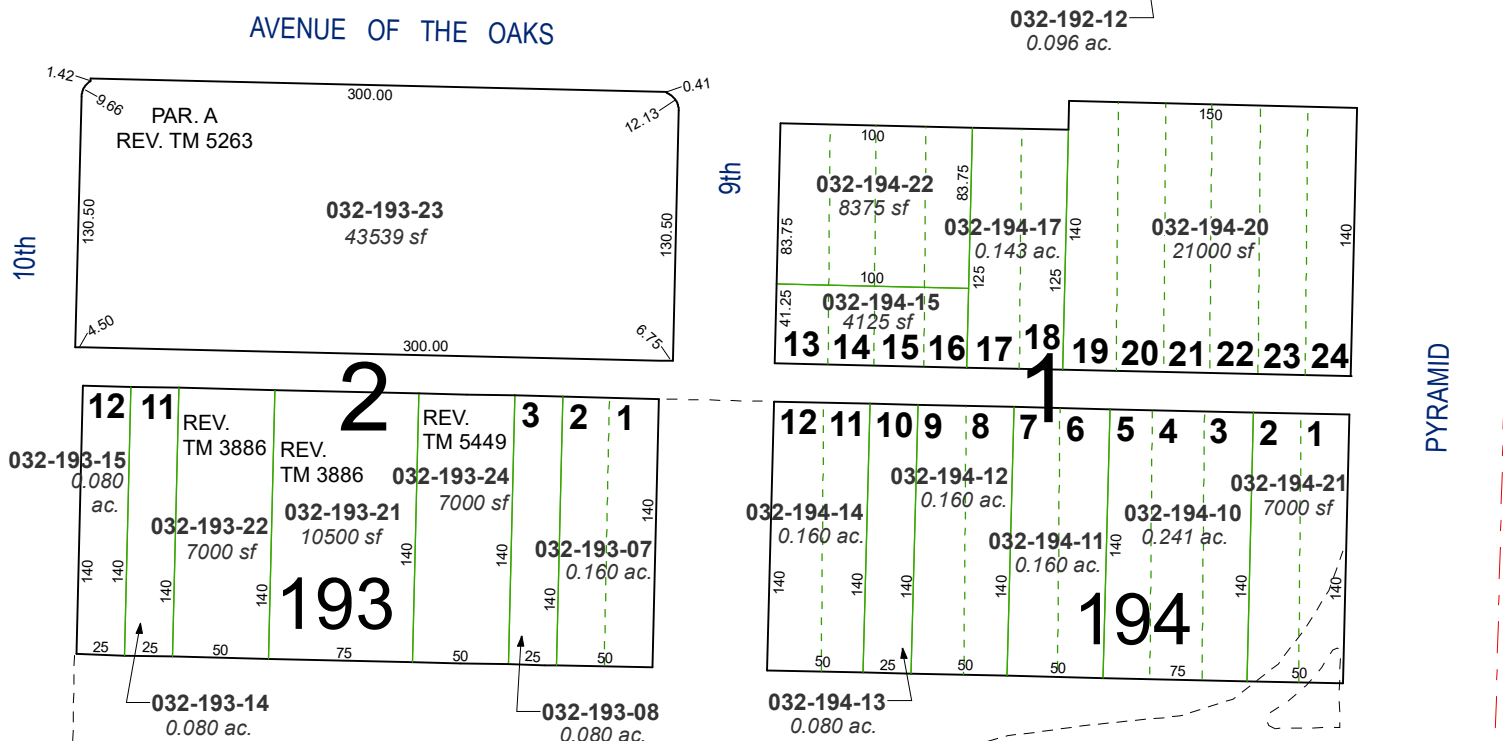
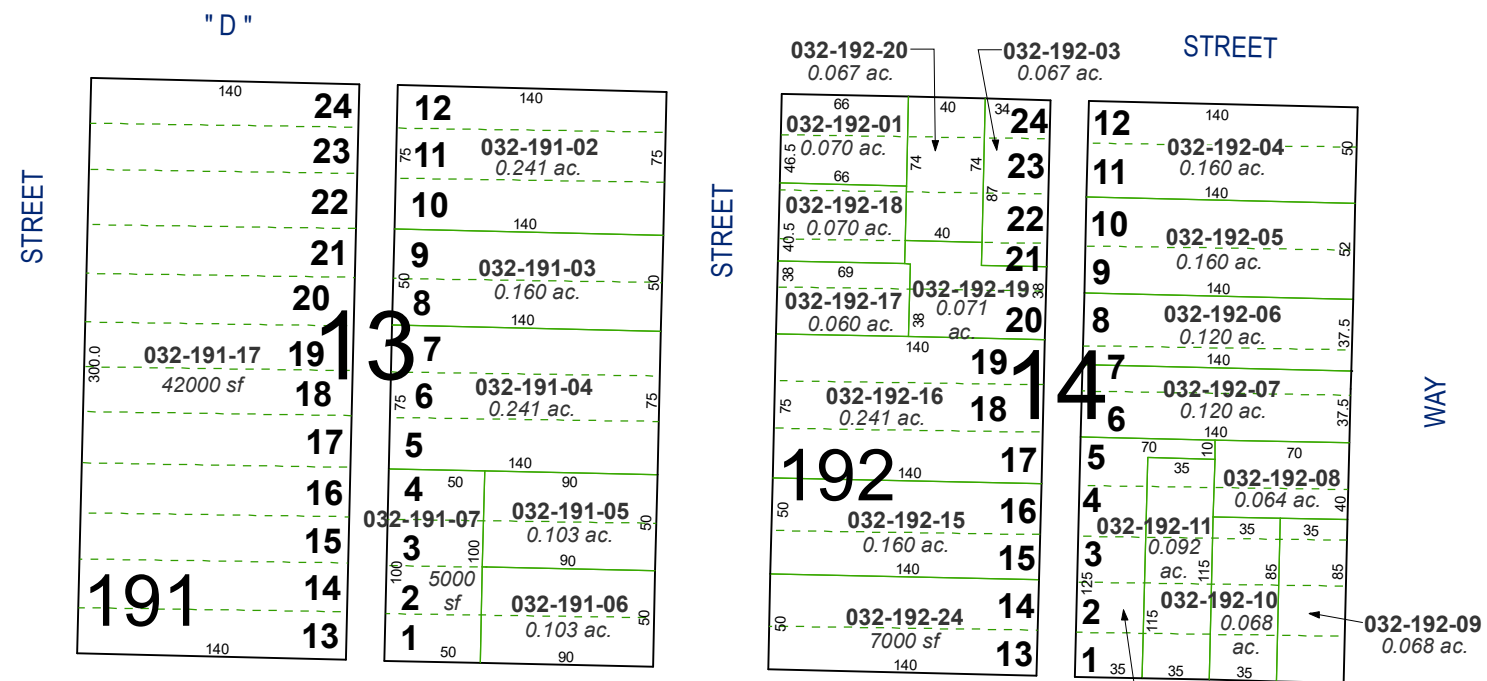
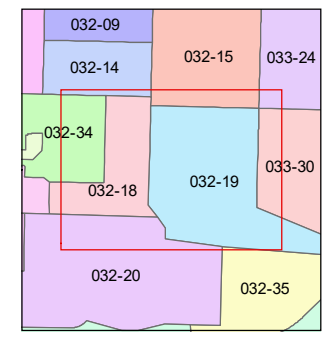
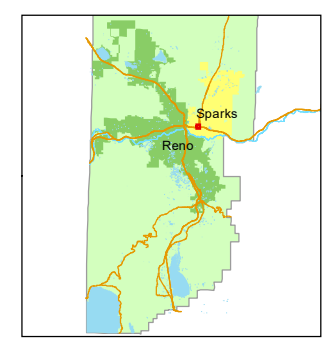
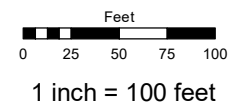


(#106)
ROBISON'S ADDITION
 PORTION OF SE 1/4 SECTION 5
 T19N - R20E



Assessor's Map Number
032-19

STATE OF NEVADA
WASHOE COUNTY
ASSESSOR'S OFFICE
 1001 East Ninth Street, Building D
 Reno, Nevada 89512
 (775) 328-2231



created by: NLH 5/19/2010
 updated: KSB 5/7/18 KSB 5/8/18
JRA 5/14/21 JRA 11/2/21
 area previously shown on map(s):

NOTE: This map was prepared for the use of the Washoe County Assessor for assessment and illustrative purposes only. It does not represent a survey of the premises. No liability is assumed as to the sufficiency or accuracy of the data delineated hereon.

(#116)
TOWNSITE OF SPARKS

(ON RAMP to I-80)