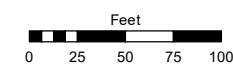
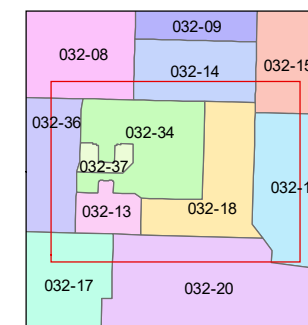
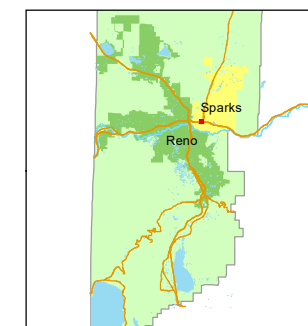


STATE OF NEVADA
WASHOE COUNTY
ASSESSOR'S OFFICE

1001 East Ninth Street, Building D
Reno, Nevada 89512
(775) 328-2231



1 inch = 100 feet



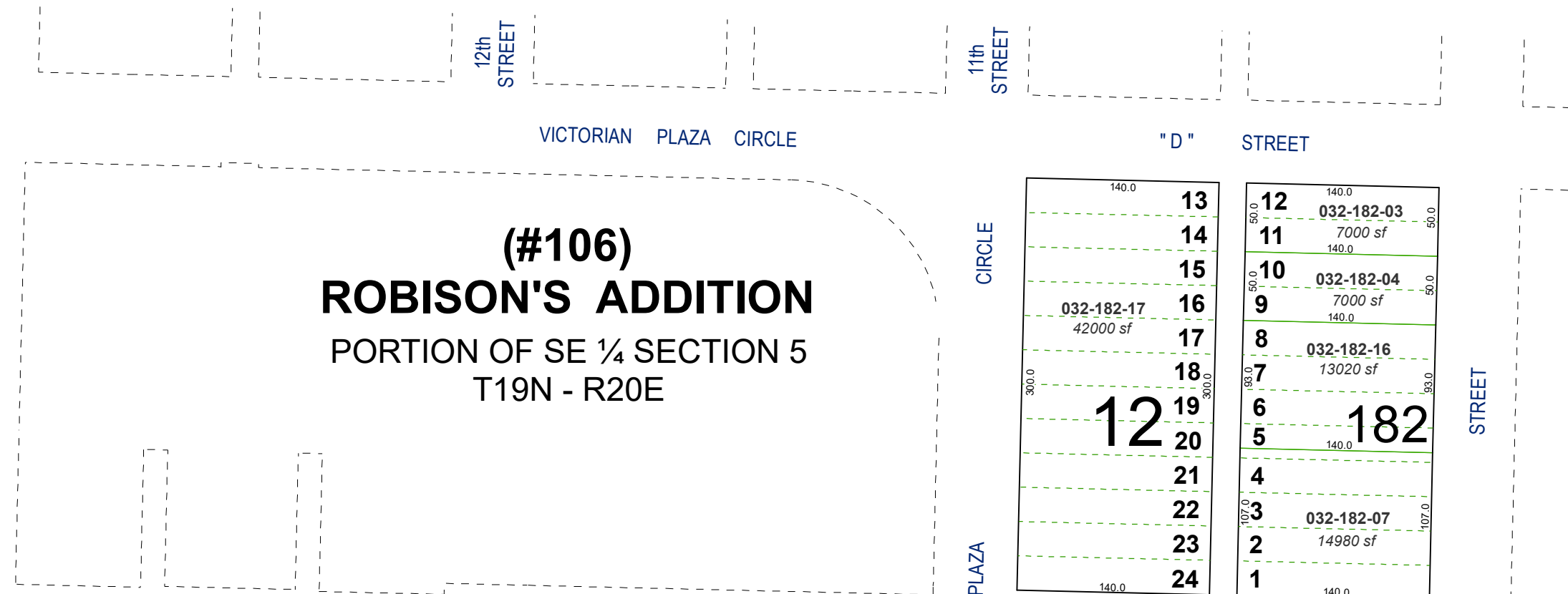
created by: NLH 5/18/2010

updated: NLH 2/08/11 JRA 5/14/21

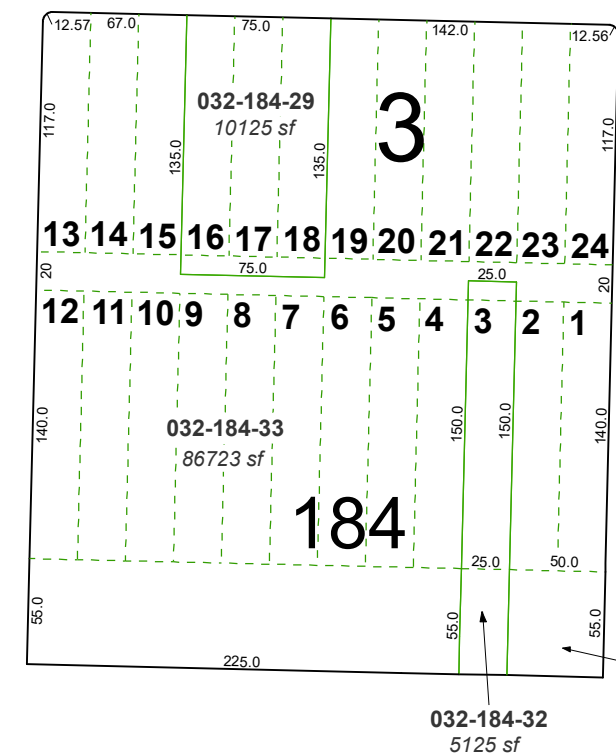
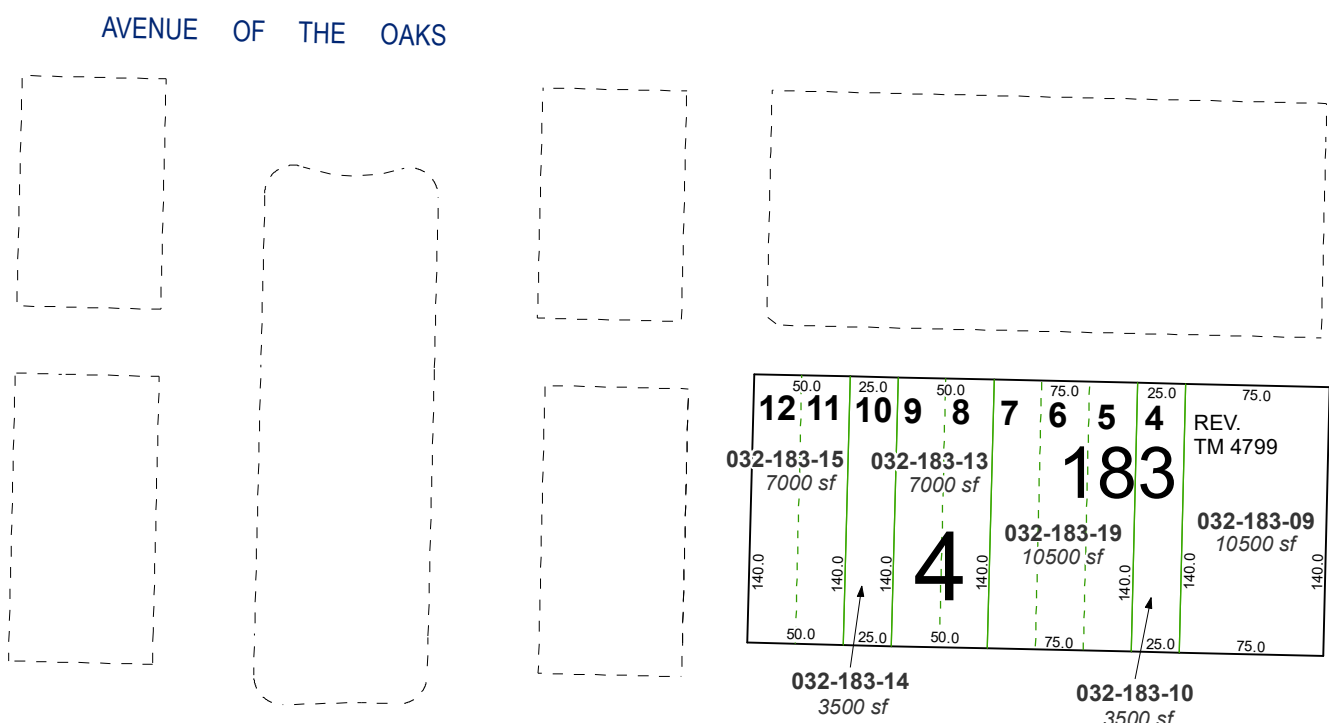
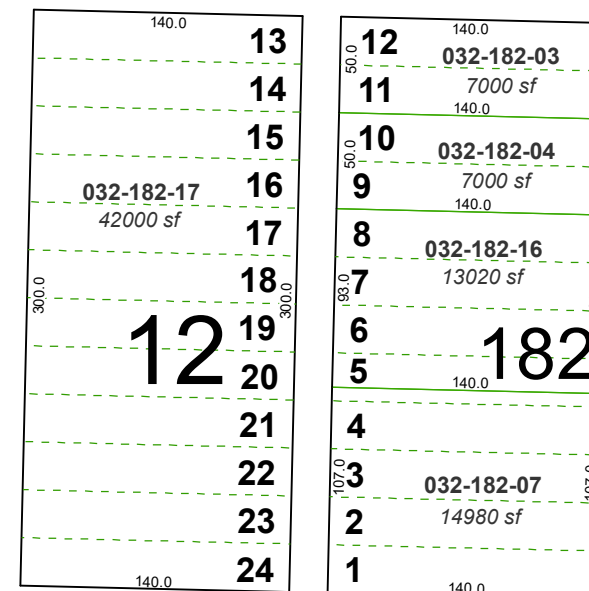
KSB 7/11/22

area previously shown on map(s):

NOTE: This map was prepared for the use of the Washoe County Assessor for assessment and illustrative purposes only. It does not represent a survey of the premises. No liability is assumed as to the sufficiency or accuracy of the data delineated hereon.



(#106)
ROBISON'S ADDITION
PORTION OF SE ¼ SECTION 5
T19N - R20E



12th STREET

VICTORIAN

AVENUE

Street Abandoned per Doc. #5305738