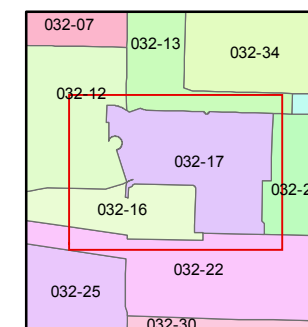
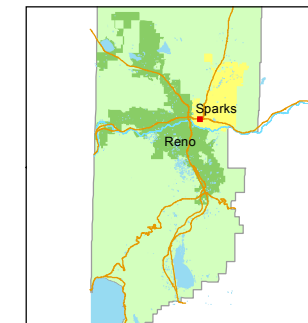




1 inch = 100 feet



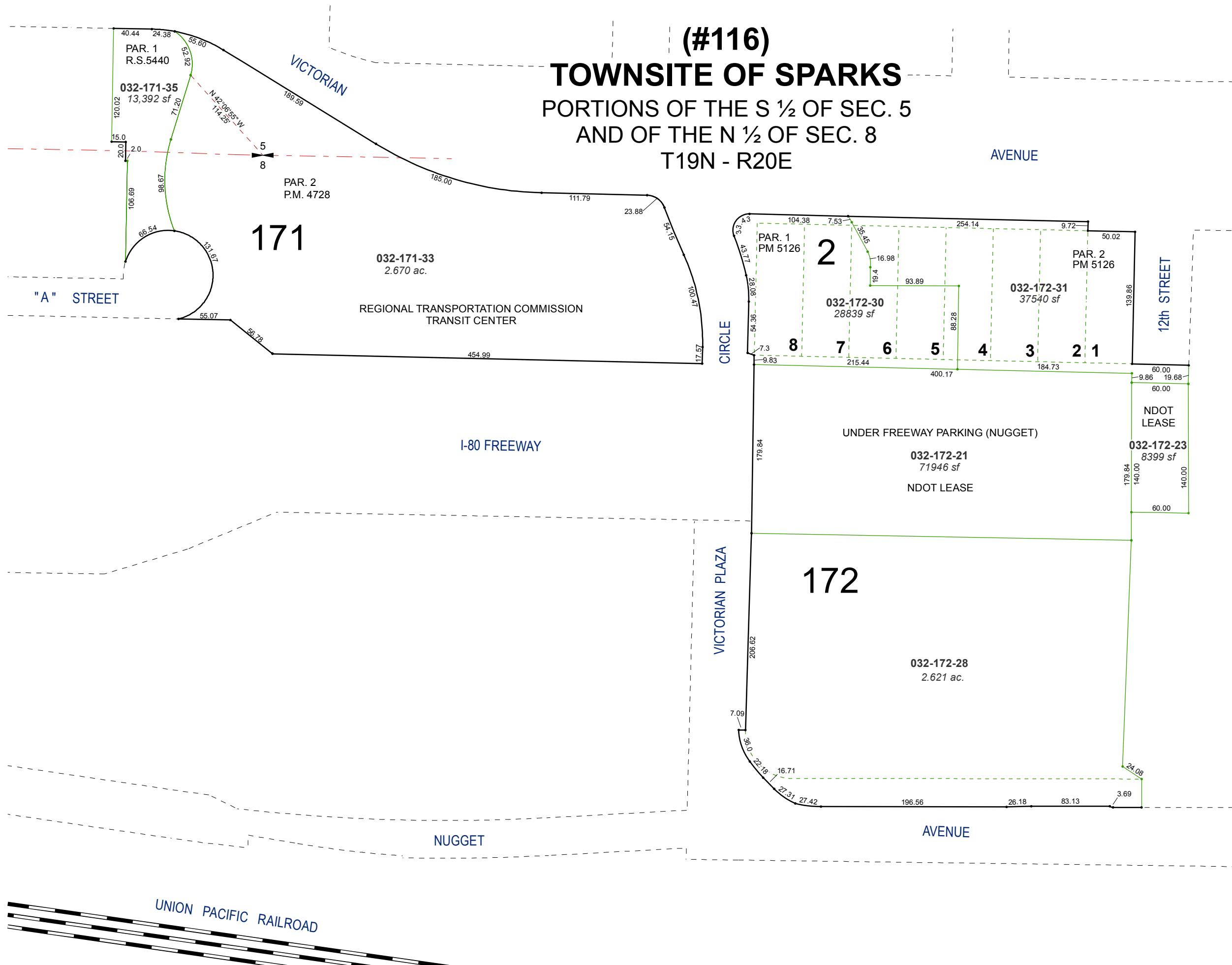
created by: NLH 05/17/2010

last updated: CFB 9/10/12 EMG 7/28/14

area previously shown on map(s)

NOTE: This map was prepared for the use of the Washoe County Assessor for assessment and illustrative purposes only. It does not represent a survey of the premises. No liability is assumed as to the sufficiency or accuracy of the data delineated hereon.

(#116)
TOWNSITE OF SPARKS
PORTIONS OF THE S 1/2 OF SEC. 5
AND OF THE N 1/2 OF SEC. 8
T19N - R20E



PAR. 1
R.S.5440

032-171-35
13,392 sf

PAR. 2
P.M. 4728

171

032-171-33
2.670 ac.

REGIONAL TRANSPORTATION COMMISSION
TRANSIT CENTER

2

PAR. 1
P.M. 5126

PAR. 2
P.M. 5126

032-172-30
28839 sf

032-172-31
37540 sf

8

7

6

5

4

3

2

1

UNDER FREEWAY PARKING (NUGGET)

032-172-21
71946 sf

NDOT LEASE

032-172-23
8399 sf

NDOT LEASE

172

032-172-28
2.621 ac.

UNION PACIFIC RAILROAD