

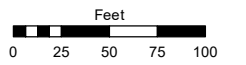
(#117)
TOWN OF SPARKS
 POR. OF N ½ SECTION 8
 T19N - R20E

Assessor's Map Number

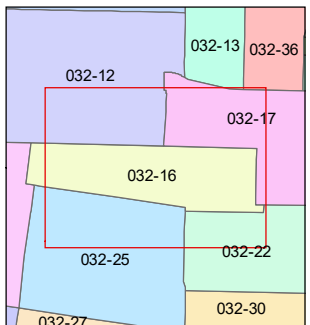
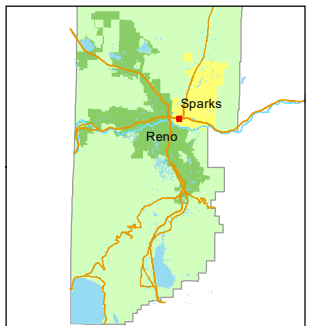
032-16

STATE OF NEVADA
WASHOE COUNTY
ASSESSOR'S OFFICE

1001 East Ninth Street, Building D
 Reno, Nevada 89512
 (775) 328-2231



1 inch = 100 feet

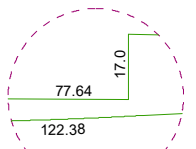
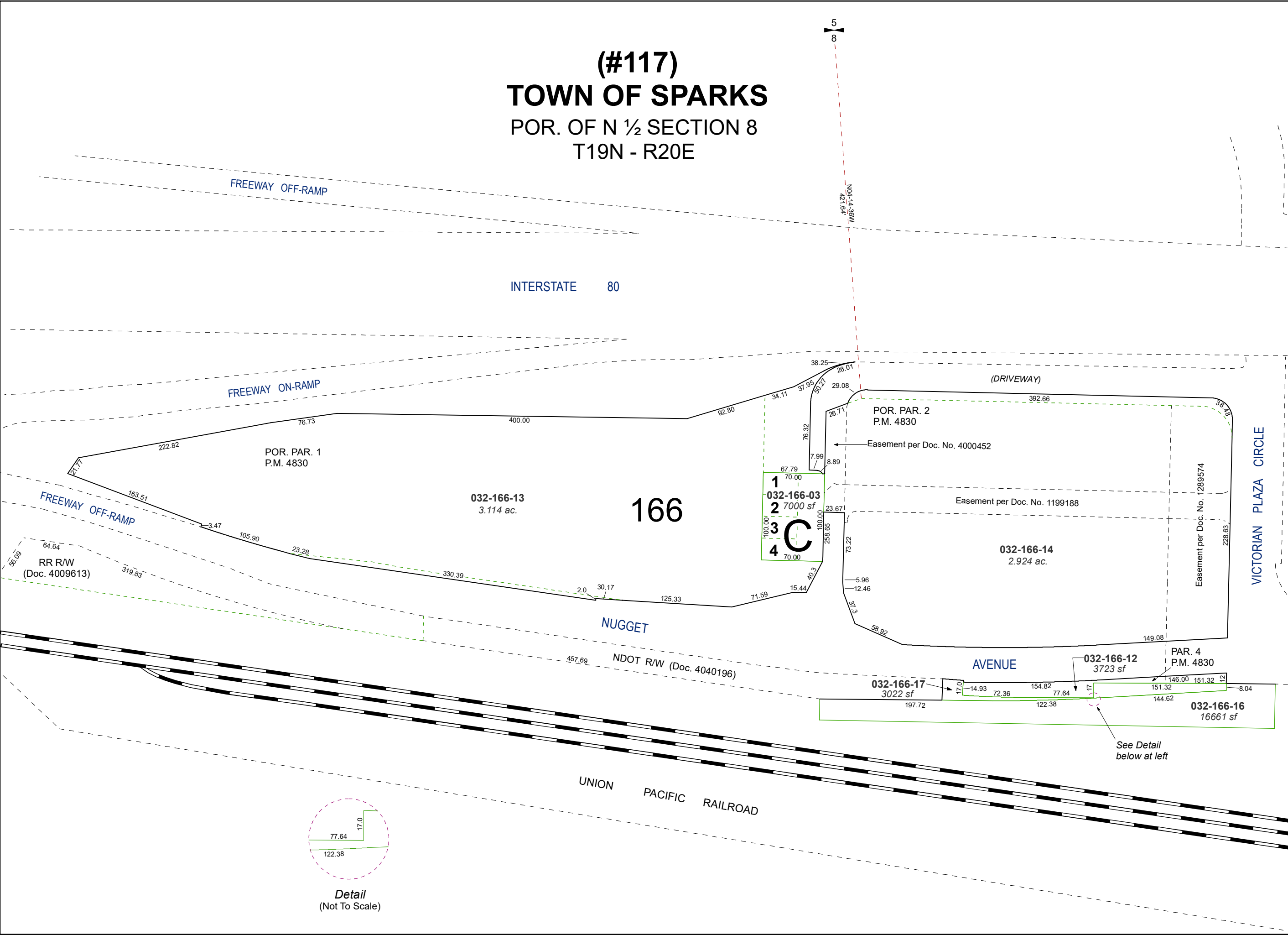


created by: NLH 5/14/2010

updated: CFB 6/17/11 KSB 3/31/21

area previously shown on map(s):

NOTE: This map was prepared for the use of the Washoe County Assessor for assessment and illustrative purposes only. It does not represent a survey of the premises. No liability is assumed as to the sufficiency or accuracy of the data delineated hereon.



Detail
(Not To Scale)