

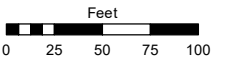
(#106)
ROBISON'S ADDITION
 POR. OF SE ¼ SECTION 5
 T19N - R20E

Assessor's Map Number

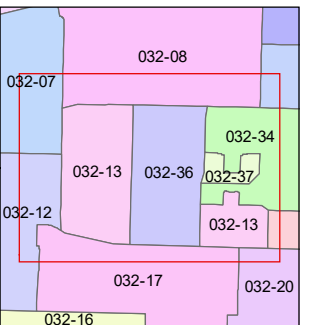
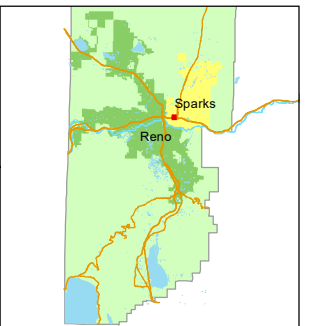
032-13

STATE OF NEVADA
WASHOE COUNTY
ASSESSOR'S OFFICE

1001 East Ninth Street, Building D
 Reno, Nevada 89512
 (775) 328-2231



1 inch = 100 feet



created by: NLH 5/12/2010

updated: KSB 12/11/18 KSB 12/18/18

JRA 7/14/21

area previously shown on map(s):

NOTE: This map was prepared for the use of the Washoe County Assessor for assessment and illustrative purposes only. It does not represent a survey of the premises. No liability is assumed as to the sufficiency or accuracy of the data delineated hereon.

