

(#79) NEWTOWN TRACT

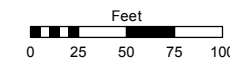
A POR. OF THE SW ¼ OF SEC. 5
AND A POR. OF THE NW ¼ OF SEC. 8
T19N - R20E

Assessor's Map Number

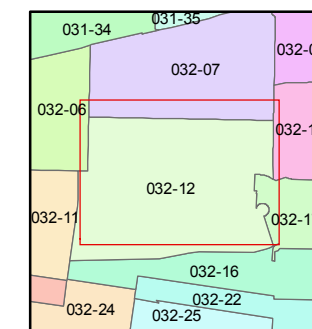
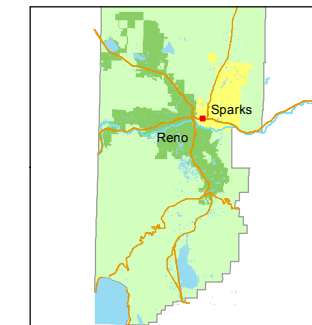
032-12

STATE OF NEVADA
WASHOE COUNTY
ASSESSOR'S OFFICE
Joshua G. Wilson, Assessor

1001 East Ninth Street
Building D
Reno, Nevada 89512
(775) 328-2231



1 inch = 100 feet

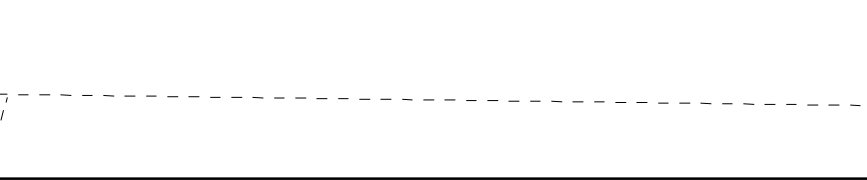
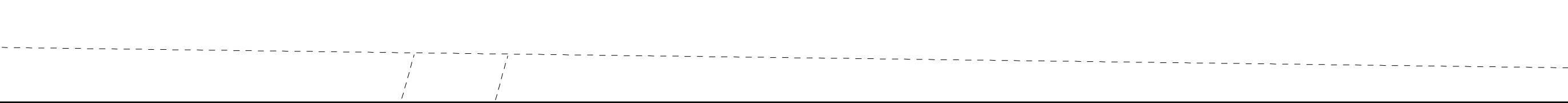
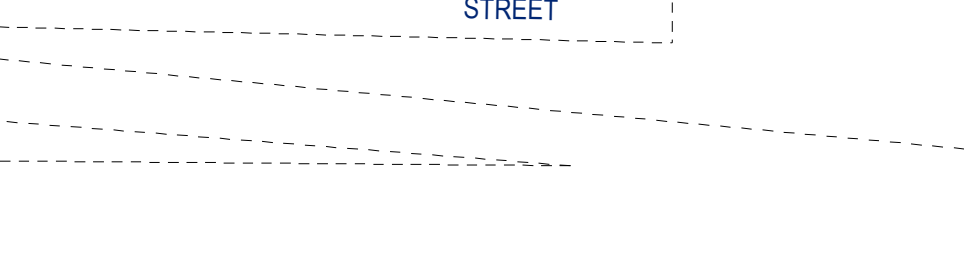
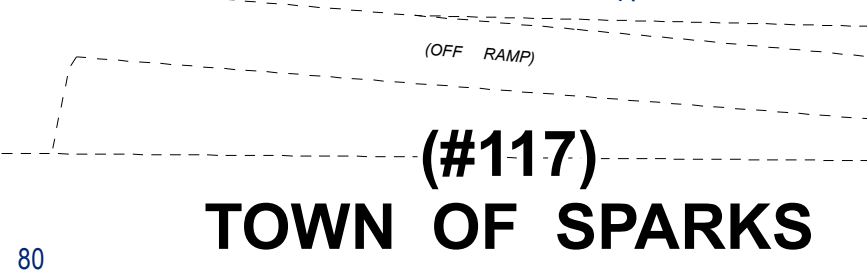
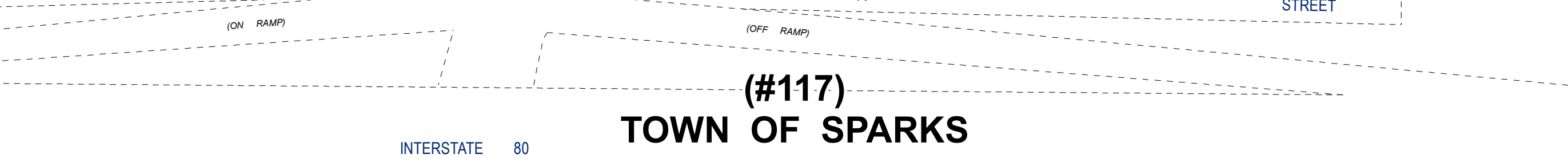
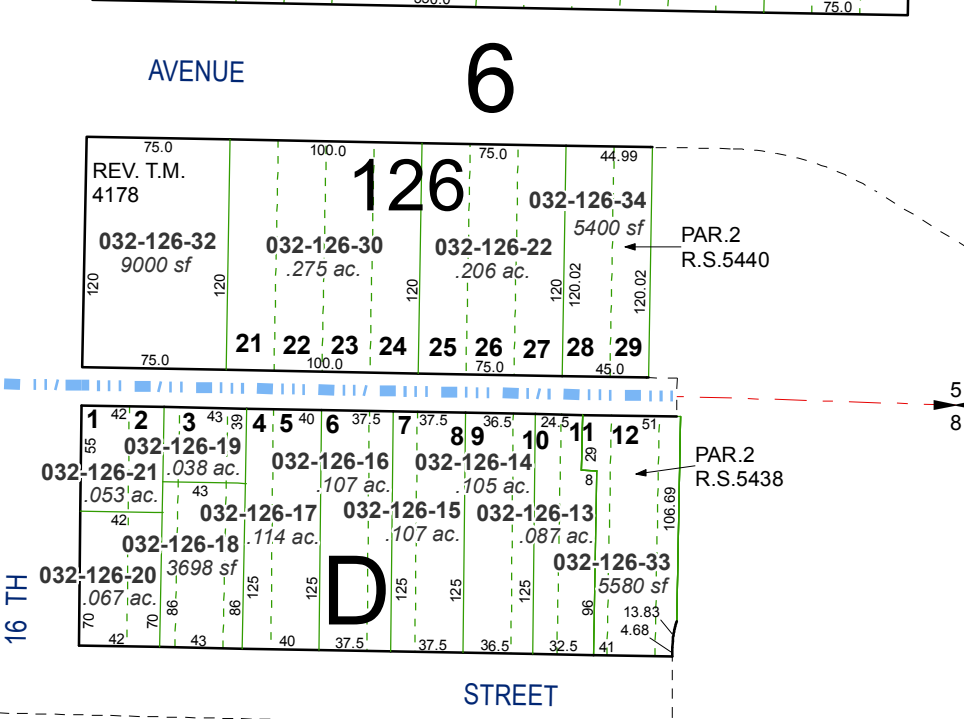
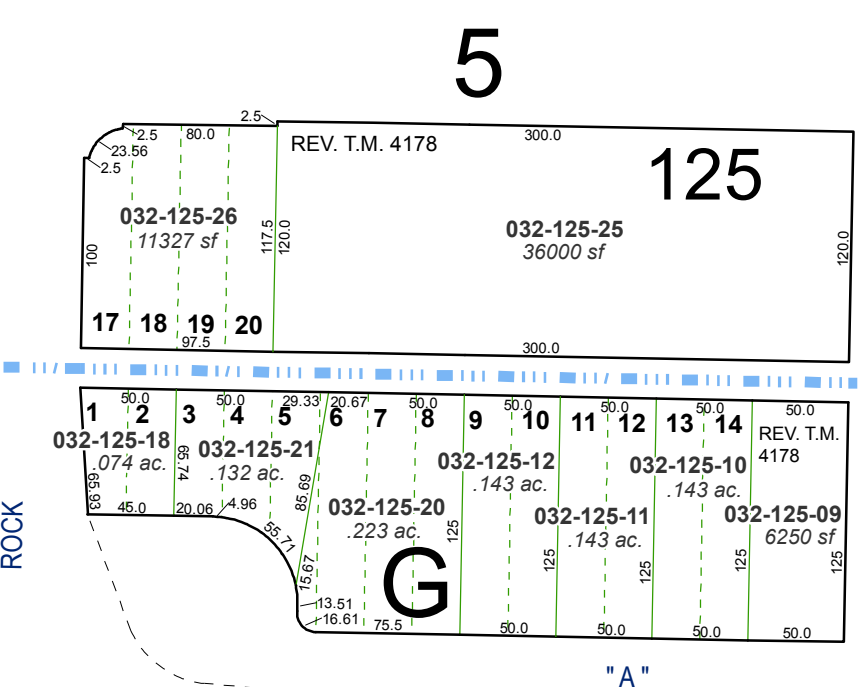
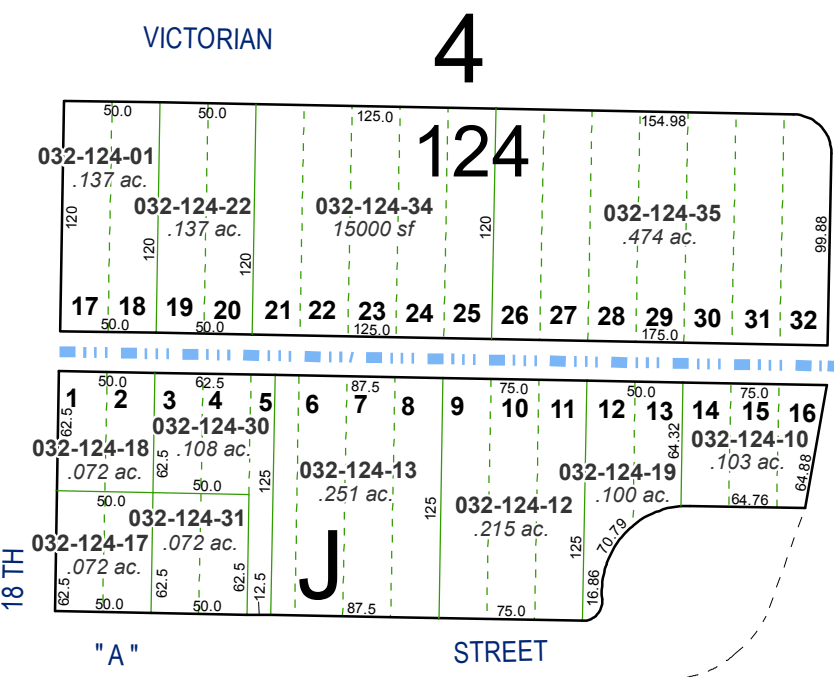
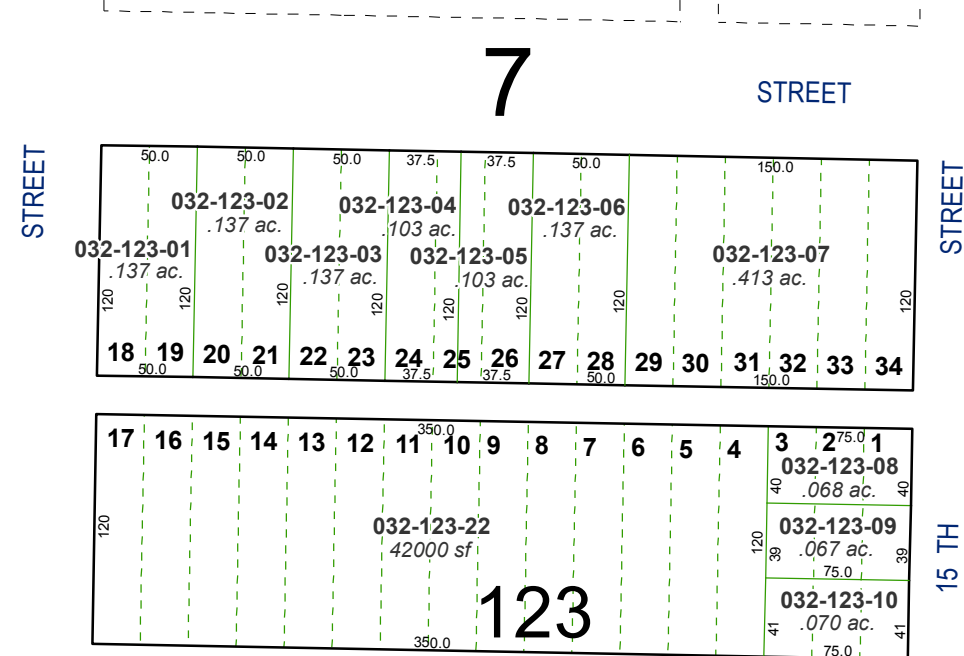
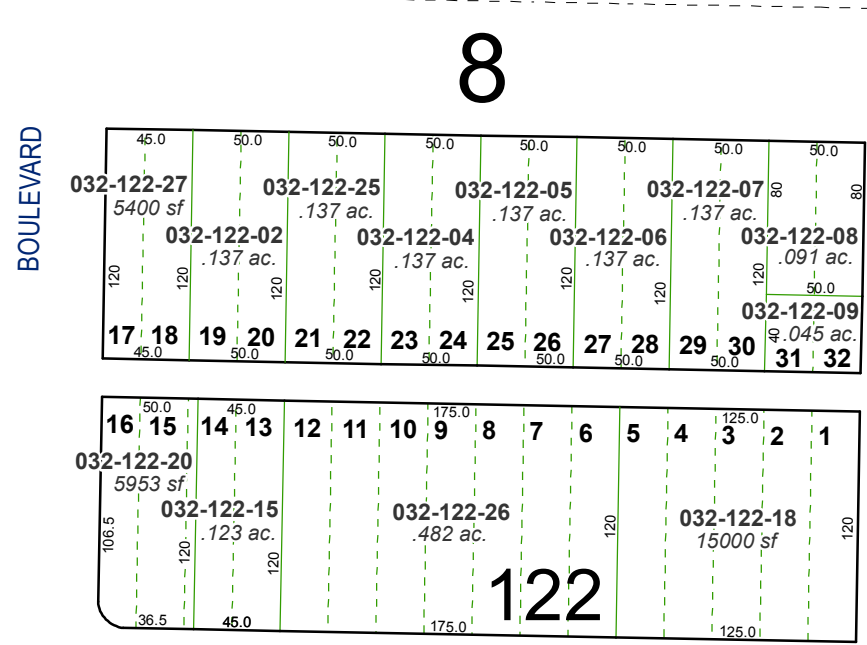
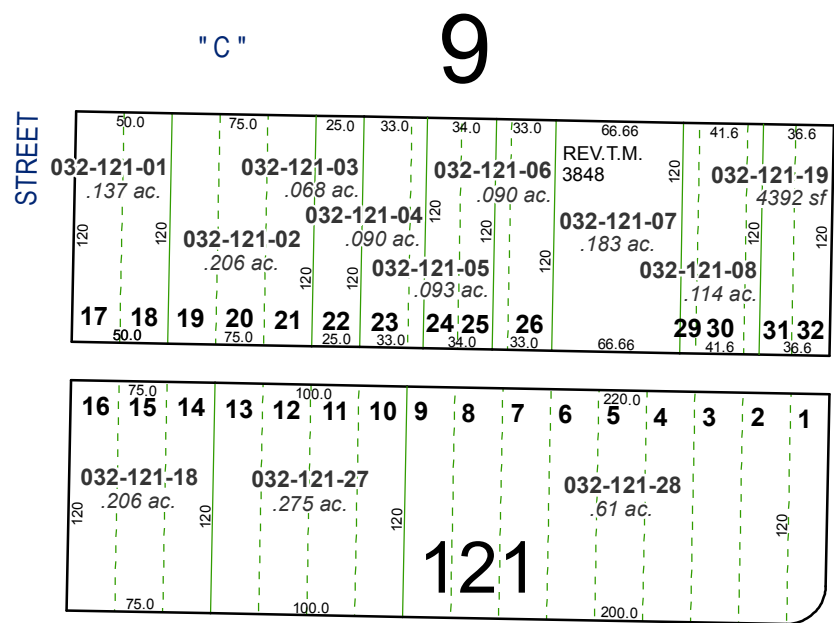


created by: NLH 05/02/2010

last updated: CFB 09/10/2012

area previously shown on map(s)

NOTE: This map was prepared for the use of the Washoe County Assessor for assessment and illustrative purposes only. It does not represent a survey of the premises. No liability is assumed as to the sufficiency or accuracy of the data delineated hereon.



(#117) TOWN OF SPARKS

INTERSTATE 80

(ON RAMP)

(OFF RAMP)