

(#213) PRATER ADDITION TO SPARKS

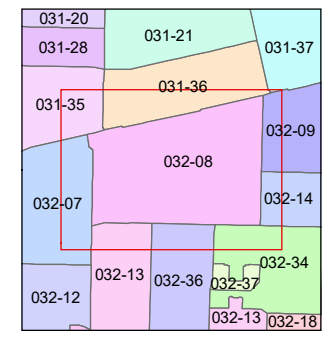
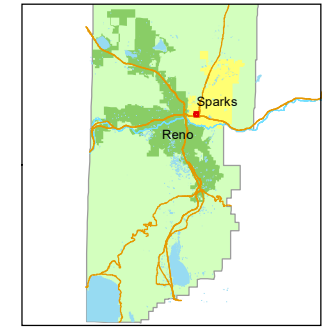
A POR. OF THE SE ¼ OF SEC. 5
T19N - R20E

Assessor's Map Number
032-08

STATE OF NEVADA
WASHOE COUNTY
ASSESSOR'S OFFICE
1001 East Ninth Street, Building D
Reno, Nevada 89512
(775) 328-2231



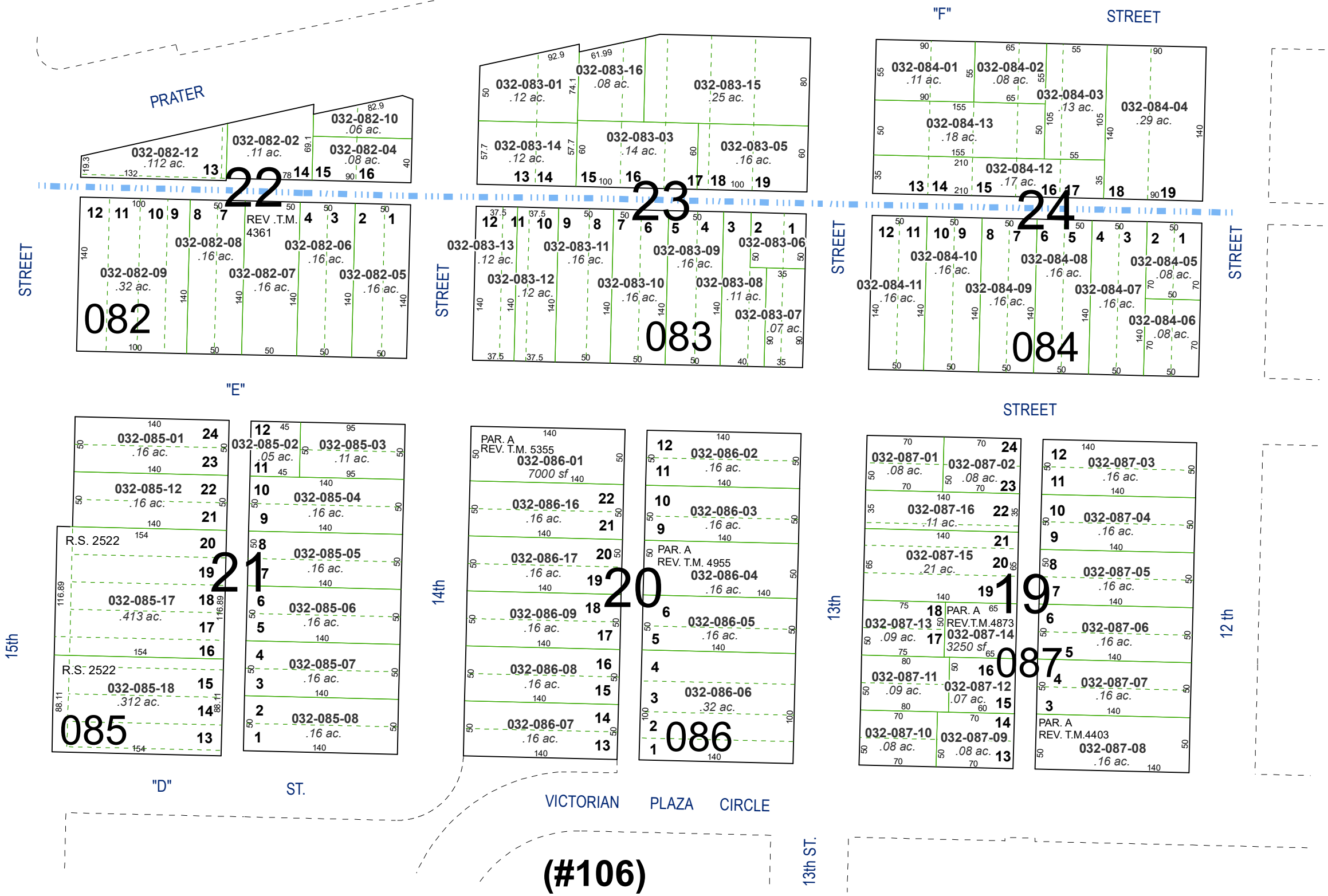
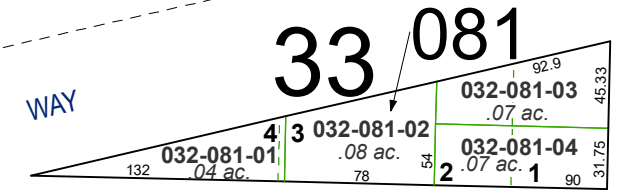
Feet
0 25 50 75 100
1 inch = 100 feet



created by: NLH 05/10/2010
updated: NLH 2/9/11 JKF 1/8/20

area previously shown on map(s):

NOTE: This map was prepared for the use of the Washoe County Assessor for assessment and illustrative purposes only. It does not represent a survey of the premises. No liability is assumed as to the sufficiency or accuracy of the data delineated hereon.



(#106) ROBISON'S ADDITION