

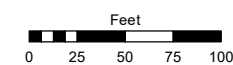
(#79)
NEWTOWN TRACT
 A POR. OF THE SW 1/4 OF SEC. 5,
 T19N - R20E

Assessor's Map Number

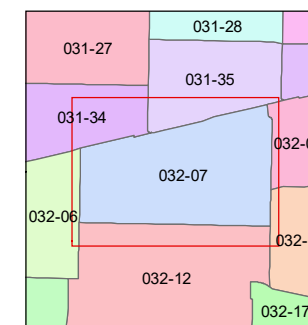
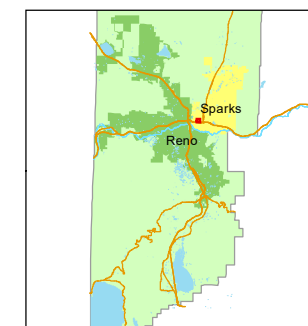
032-07

STATE OF NEVADA
WASHOE COUNTY
 ASSESSOR'S OFFICE

1001 East Ninth Street, Building D
 Reno, Nevada 89512
 (775) 328-2231



1 inch = 100 feet



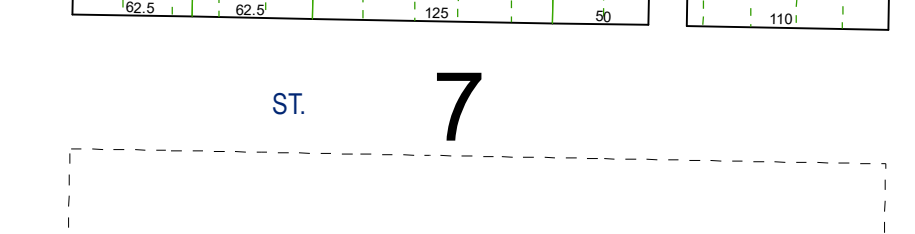
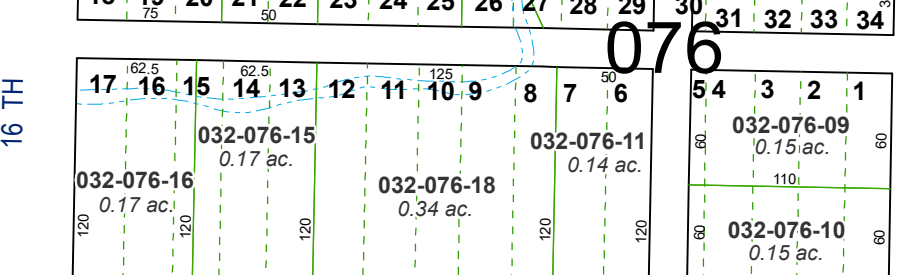
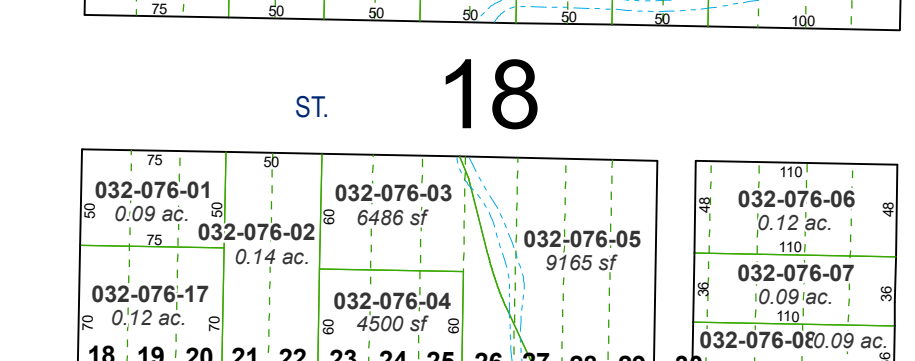
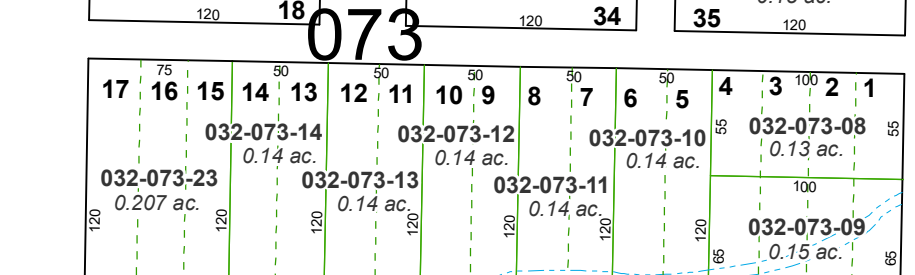
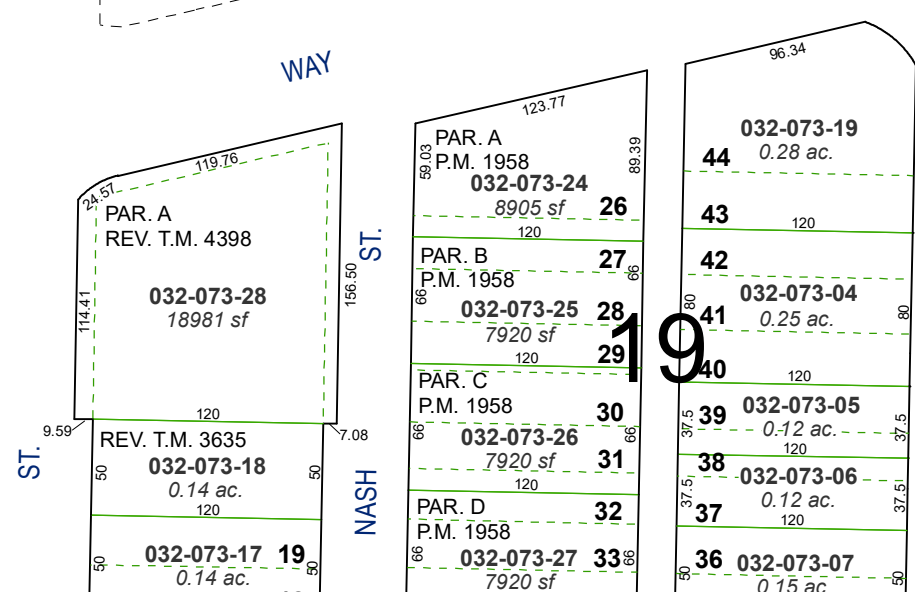
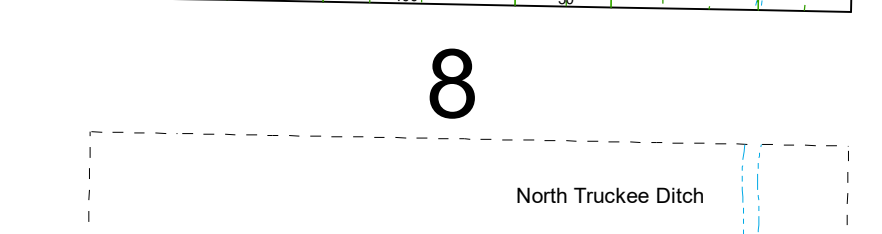
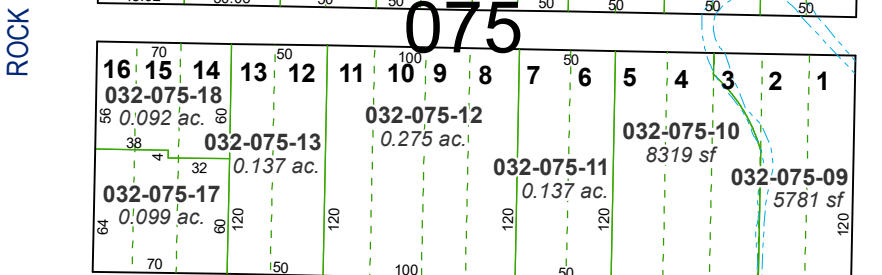
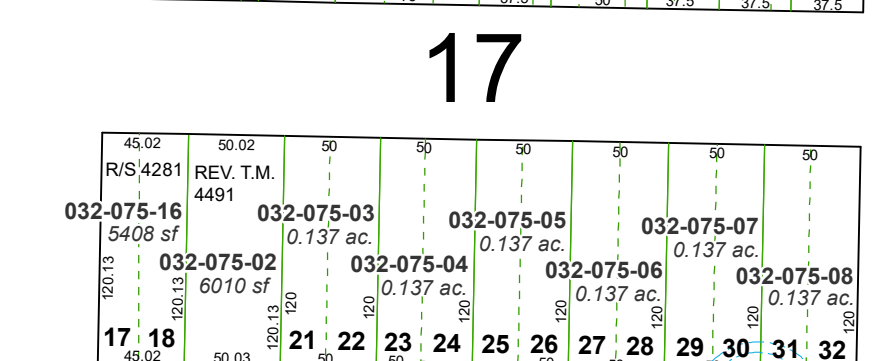
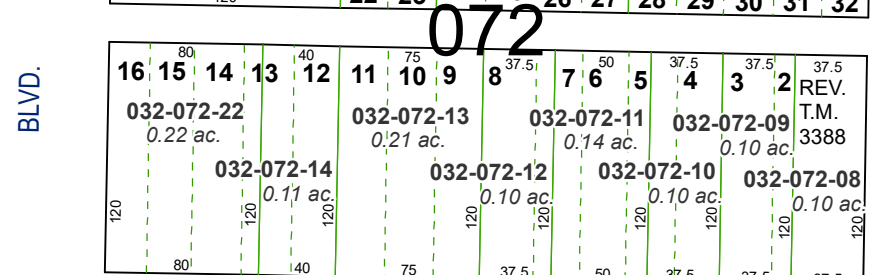
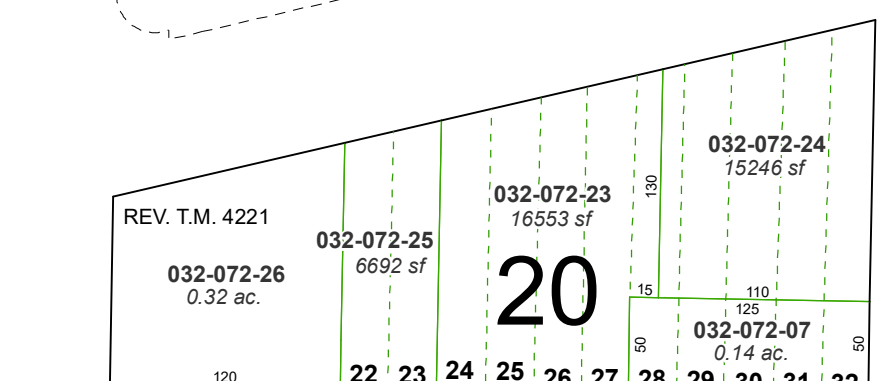
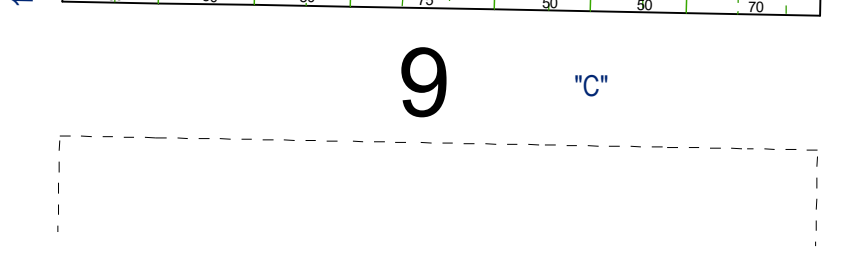
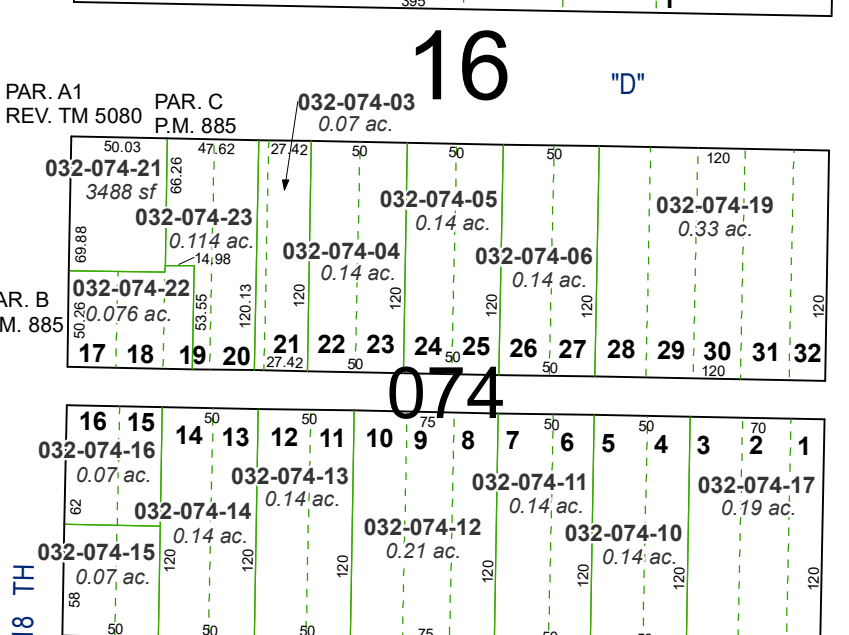
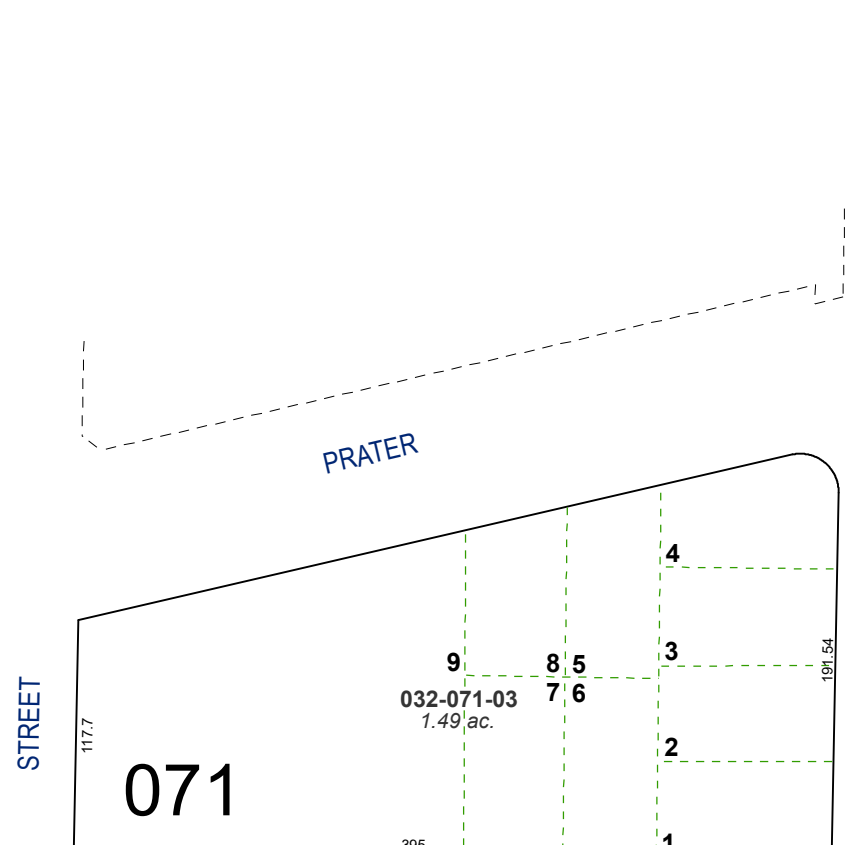
created by: NLH 5/07/2010

updated: CFB 3/20/14 EMG 6/13/14

JRA 4/27/22

area previously shown on map(s):

NOTE: This map was prepared for the use of the Washoe County Assessor for assessment and illustrative purposes only. It does not represent a survey of the premises. No liability is assumed as to the sufficiency or accuracy of the data delineated hereon.



North Truckee Ditch

15th

ST.

7

BLVD.

STREET

WAY

ST.

NASH

STREET

ST.

16 TH

20

17

075

8

073

18

076

19

16

074

9

"D"

"C"

PRATER

071

PAR. A1
REV. TM 5080

PAR. B
P.M. 885

PAR. C
P.M. 885

REV. T.M. 4221

R/S 4281

REV. T.M. 4491

PAR. A
REV. T.M. 4398

REV. T.M. 3635

PAR. A
P.M. 1958

PAR. B
P.M. 1958

PAR. C
P.M. 1958

PAR. D
P.M. 1958

032-073-19

032-073-04

032-073-05

032-073-06

032-073-07

032-072-26

032-072-22

032-072-14

032-075-16

032-075-02

032-075-17

032-075-18

032-075-13

032-075-17

032-075-17

032-072-23

032-072-13

032-072-12

032-075-03

032-075-04

032-075-11

032-075-12

032-075-11

032-075-12

032-075-11

032-072-24

032-072-07

032-072-10

032-072-08

032-075-05

032-075-06

032-075-10

032-075-09

032-075-09

032-075-09

032-075-09

032-073-28

032-073-18

032-073-17

032-073-14

032-073-23

032-076-01

032-076-17

032-076-16

032-073-24

032-073-25

032-073-26

032-073-27

032-073-27

032-073-12

032-073-13

032-076-02

032-076-04

032-076-15

032-076-18

032-076-11

032-076-11

032-076-11

032-073-26

032-073-28

032-073-29

032-073-30

032-073-31

032-073-32

032-073-33

032-073-34

032-076-03

032-076-05

032-076-09

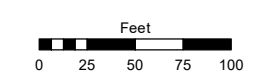
032-076-10

032-076-10

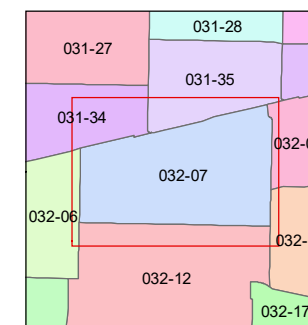
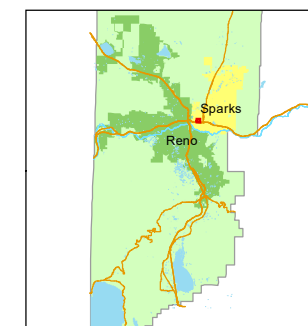
032-076-10

032-076-10

STATE OF NEVADA
WASHOE COUNTY
 ASSESSOR'S OFFICE



1 inch = 100 feet



created by: NLH 5/07/2010

updated: CFB 3/20/14 EMG 6/13/14

JRA 4/27/22

area previously shown on map(s):

NOTE: This map was prepared for the use of the Washoe County Assessor for assessment and illustrative purposes only. It does not represent a survey of the premises. No liability is assumed as to the sufficiency or accuracy of the data delineated hereon.