

# (#79) NEWTOWN TRACT

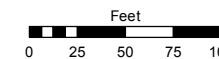
POR. OF SW 1/4 SECTION 5  
T19N - R20E

Assessor's Map Number

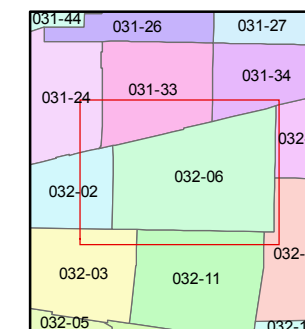
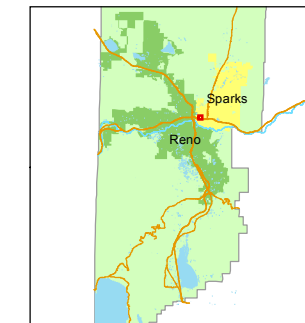
**032-06**

STATE OF NEVADA  
**WASHOE COUNTY**  
ASSESSOR'S OFFICE  
Michael E. Clark, Assessor

1001 East Ninth Street  
Building D  
Reno, Nevada 89512  
(775) 328-2231



1 inch = 100 feet

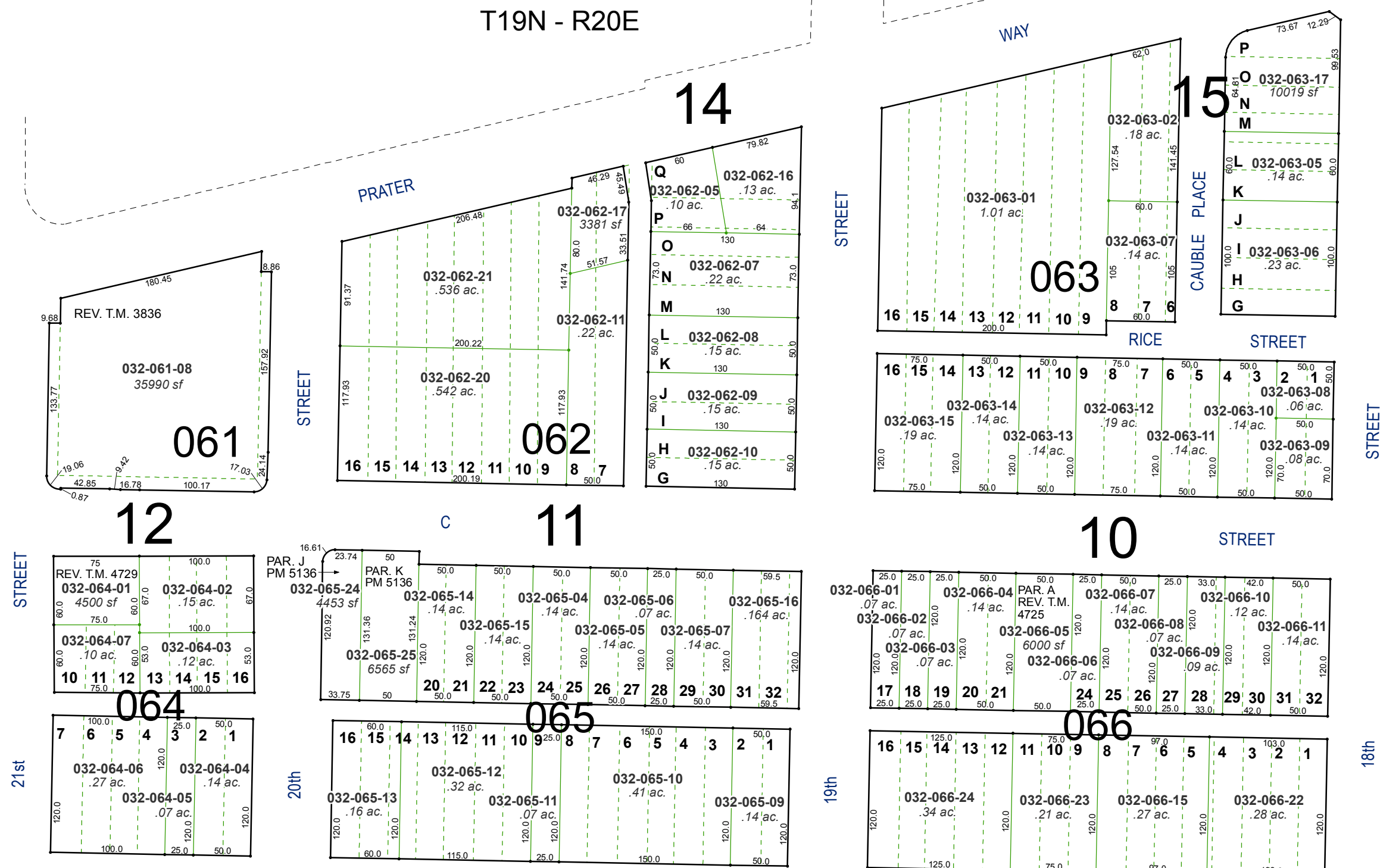


created by: NLH 5/05/2010

last updated: EMG 11/04/14 KSB 4/07/17

area previously shown on map(s)

NOTE: This map was prepared for the use of the Washoe County Assessor for assessment and illustrative purposes only. It does not represent a survey of the premises. No liability is assumed as to the sufficiency or accuracy of the data delineated hereon.



D ST.

STREET

18th

STREET

19th

STREET

21st

STREET

20th

VICTORIAN

AVENUE