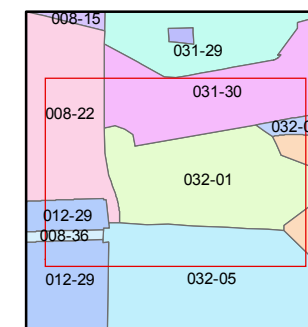
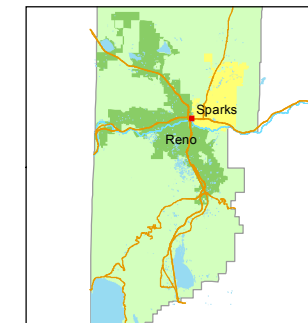




1 inch = 100 feet



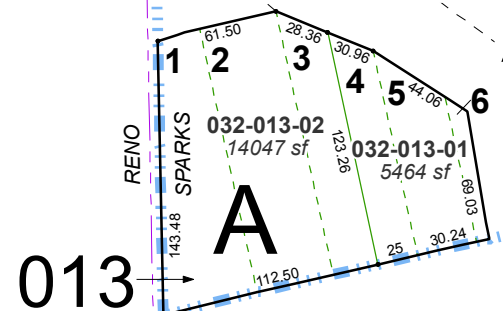
created by: NLH 07/29/2010

last updated: SR 12/22/17

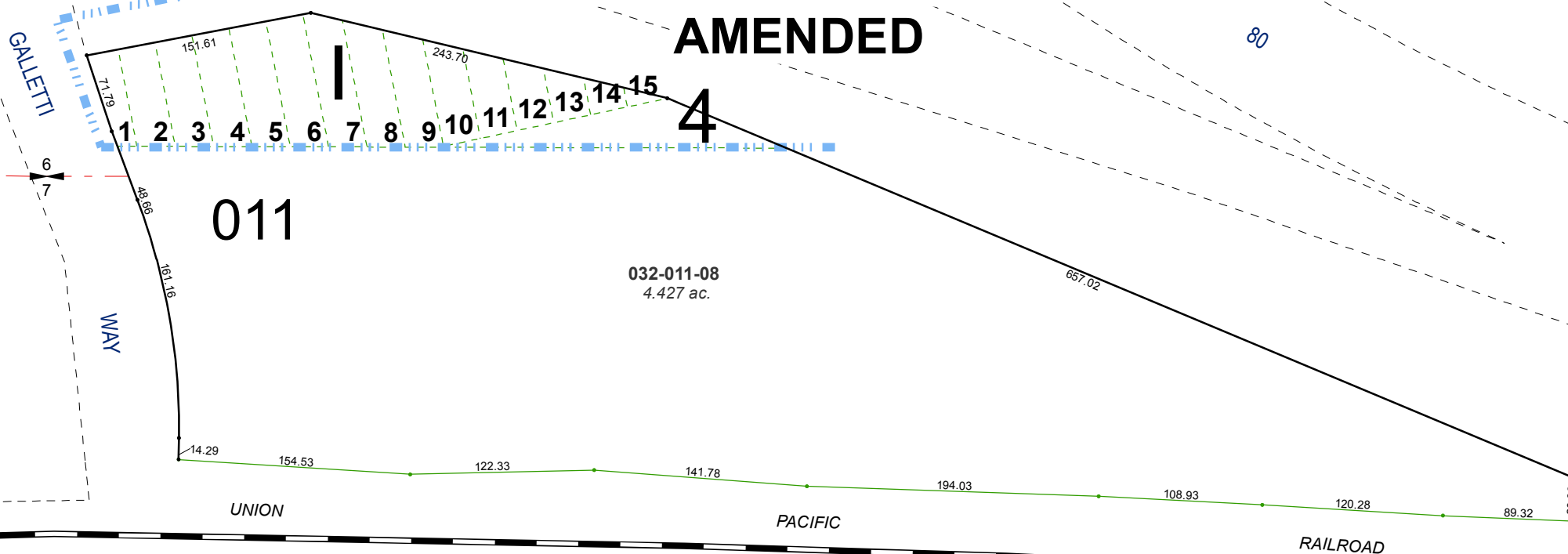
area previously shown on map(s)

PORTIONS OF THE SE ¼ OF SEC. 6
AND THE NE ¼ OF SEC. 7
T19N - R20E

(#20)
EAST RENO HEIGHTS
AMENDED



(#40)
HUMPHREY TRACT
AMENDED



NOTE: This map was prepared for the use of the Washoe County Assessor for assessment and illustrative purposes only. It does not represent a survey of the premises. No liability is assumed as to the sufficiency or accuracy of the data delineated hereon.