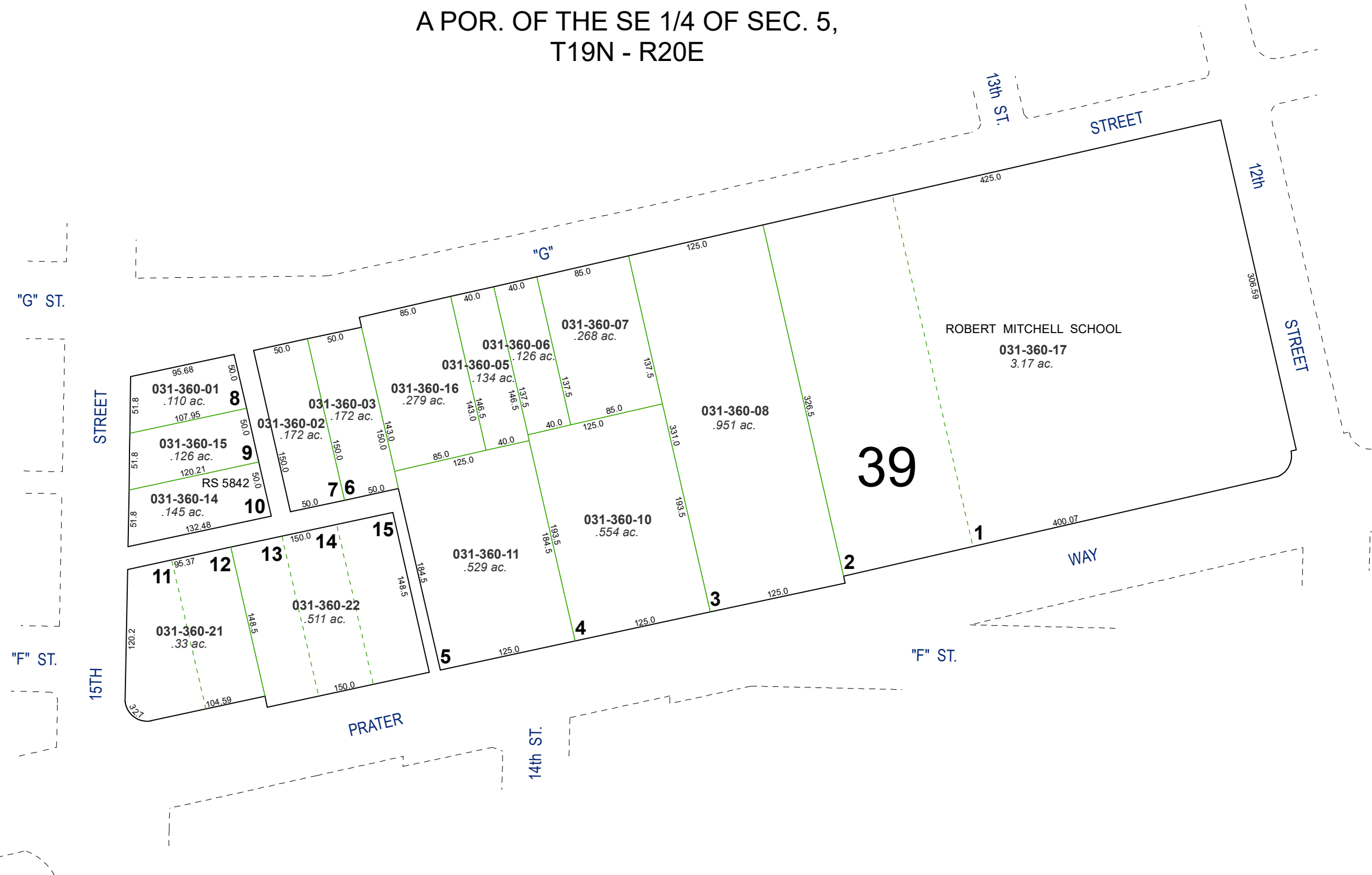
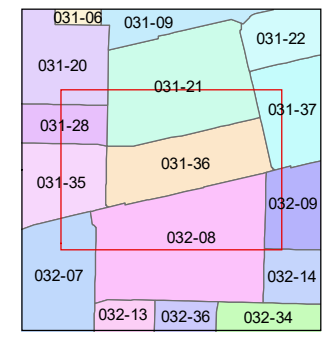
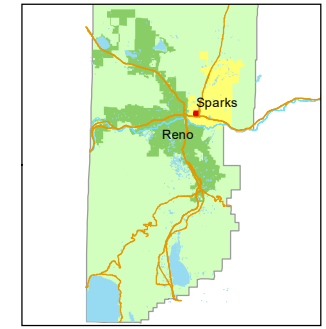
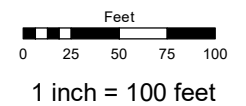


(#213)
PRATER ADDITION TO SPARKS
 A POR. OF THE SE 1/4 OF SEC. 5,
 T19N - R20E



Assessor's Map Number
031-36

STATE OF NEVADA
WASHOE COUNTY
ASSESSOR'S OFFICE
 1001 East Ninth Street, Building D
 Reno, Nevada 89512
 (775) 328-2231



created by: NLH 4/15/2010
 updated: JRA 7/29/21

area previously shown on map(s):

NOTE: This map was prepared for the use of the Washoe County Assessor for assessment and illustrative purposes only. It does not represent a survey of the premises. No liability is assumed as to the sufficiency or accuracy of the data delineated hereon.