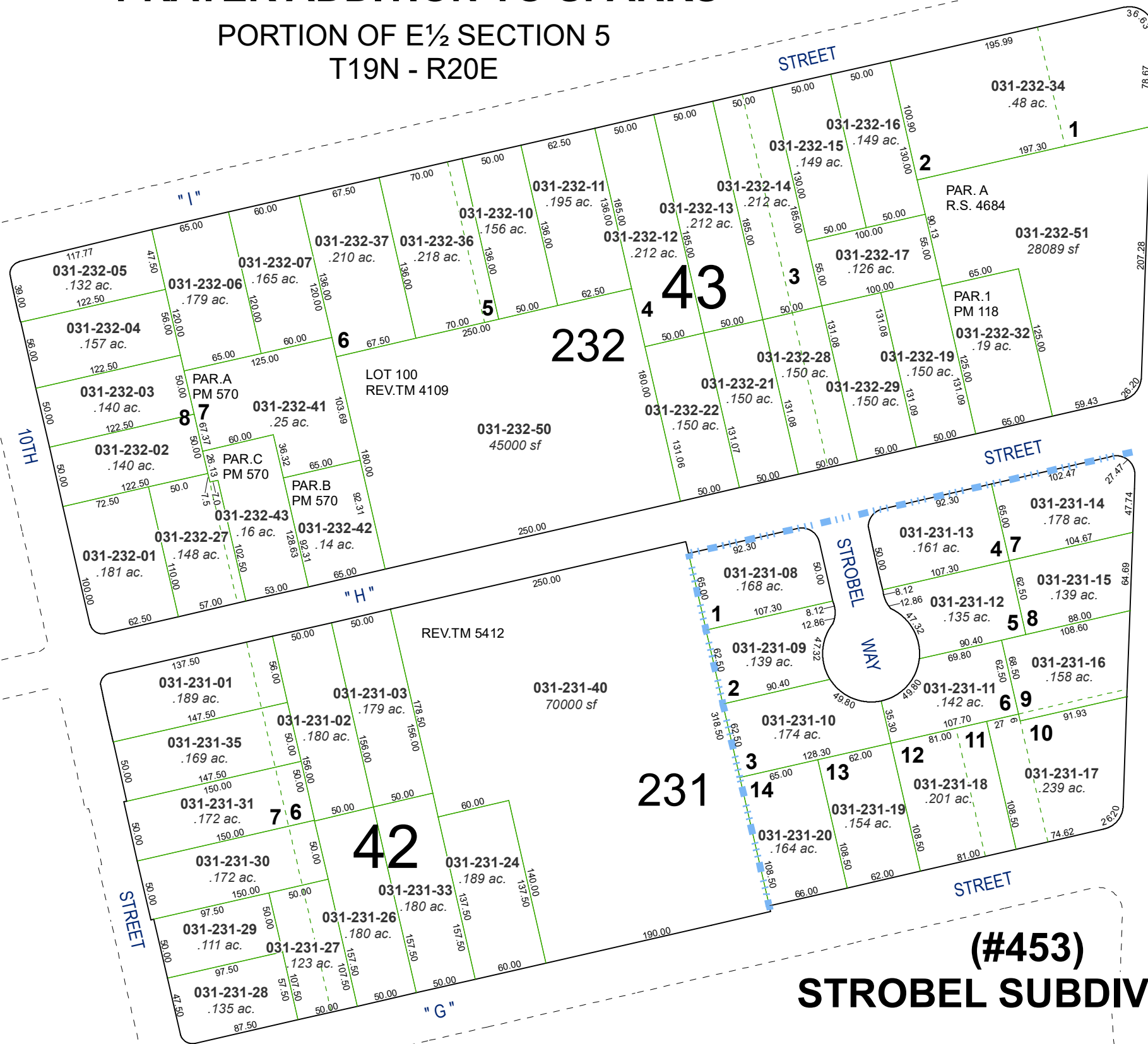
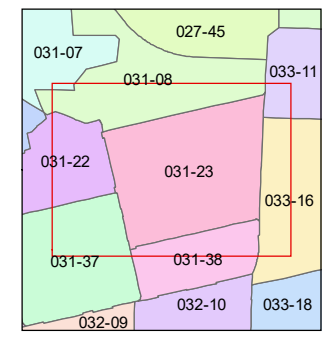
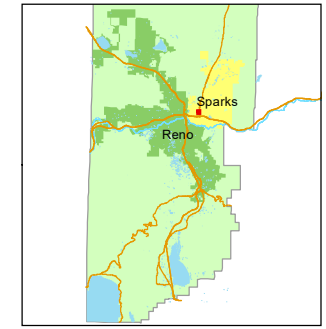
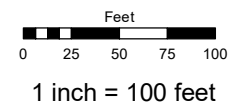


(#213)
PRATER ADDITION TO SPARKS
 PORTION OF E½ SECTION 5
 T19N - R20E



Assessor's Map Number
031-23

STATE OF NEVADA
WASHOE COUNTY
ASSESSOR'S OFFICE
 1001 East Ninth Street, Building D
 Reno, Nevada 89512
 (775) 328-2231



created by: NLH 03/31/2010
 updated: SR 03/03/21
 area previously shown on map(s): _____

NOTE: This map was prepared for the use of the Washoe County Assessor for assessment and illustrative purposes only. It does not represent a survey of the premises. No liability is assumed as to the sufficiency or accuracy of the data delineated hereon.

(#453)
STROBEL SUBDIVISION