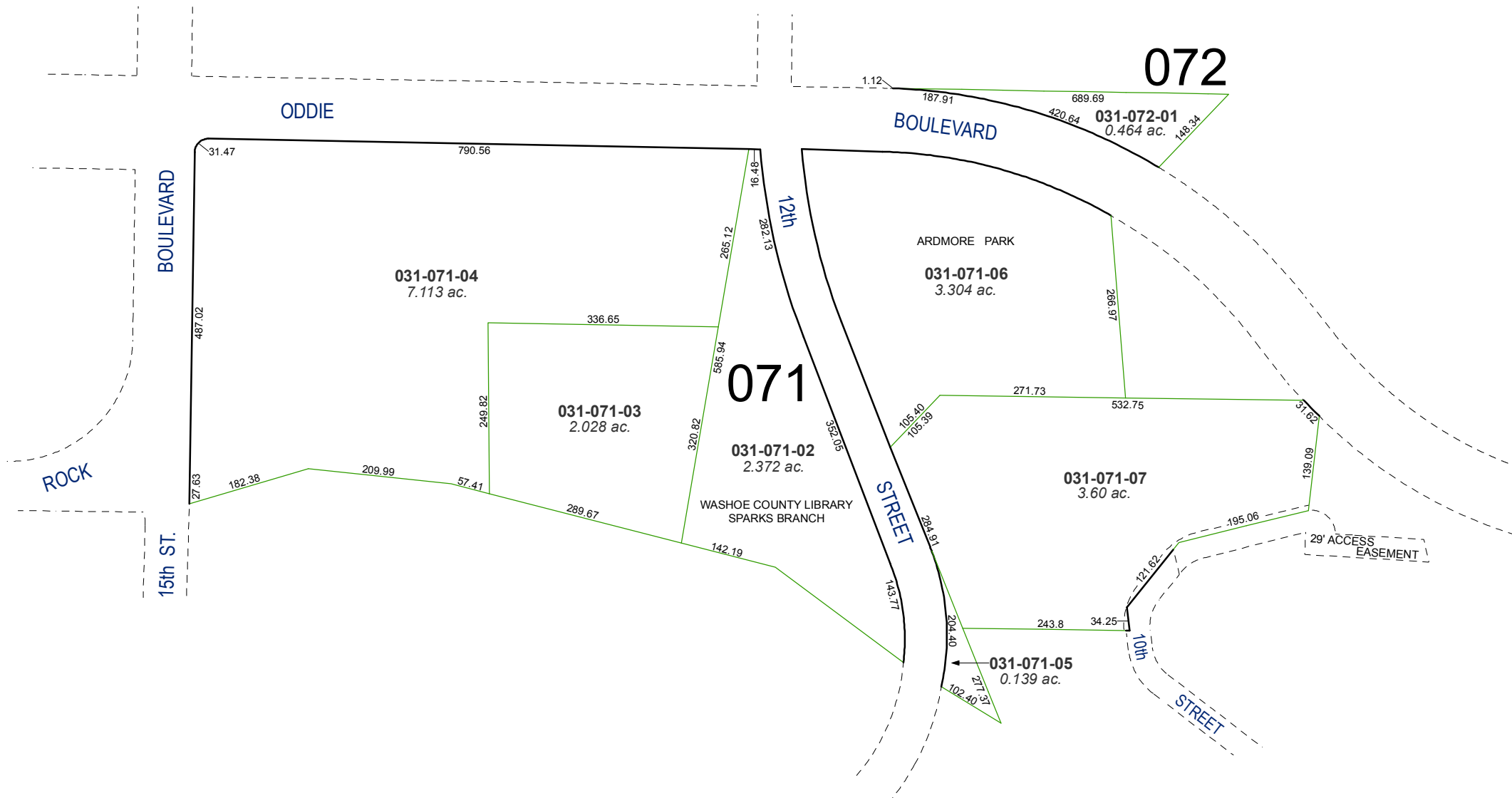
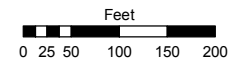


A POR. OF THE NE ¼ OF SEC. 5
T19N - R20E

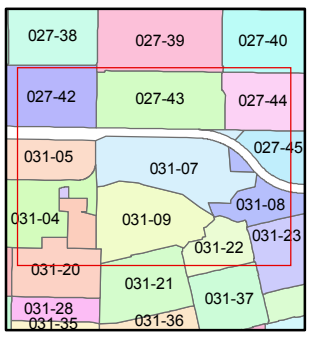
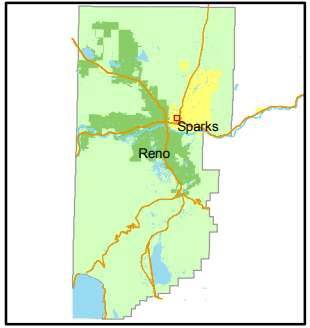


Assessor's Map Number
031-07

STATE OF NEVADA
WASHOE COUNTY
ASSESSOR'S OFFICE
 Joshua G. Wilson, Assessor
 1001 East Ninth Street
 Building D
 Reno, Nevada 89512
 (775) 328-2231



1 inch = 200 feet



created by: NLH 7/26/2010
 last updated: NLH 7/27/2010

area previously shown on map(s)
027-45 & 031-08

NOTE: This map was prepared for the use of the Washoe County Assessor for assessment and illustrative purposes only. It does not represent a survey of the premises. No liability is assumed as to the sufficiency or accuracy of the data delineated herein.