

MALL DR.

BOOK 026

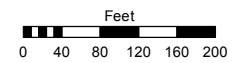
A POR. OF SEC. 6,  
T19N - R20E

BOOK 026

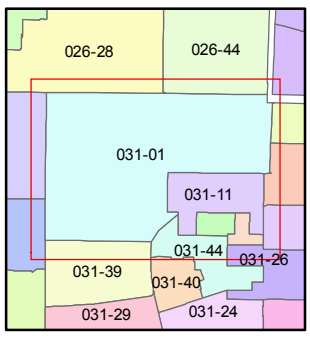
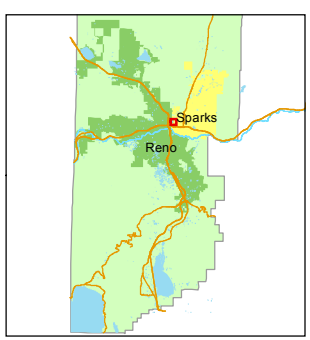
Assessor's Map Number  
**031-01**

STATE OF NEVADA  
**WASHOE COUNTY**  
ASSESSOR'S OFFICE  
Michael E. Clark, Assessor

1001 East Ninth Street  
Building D  
Reno, Nevada 89512  
(775) 328-2231



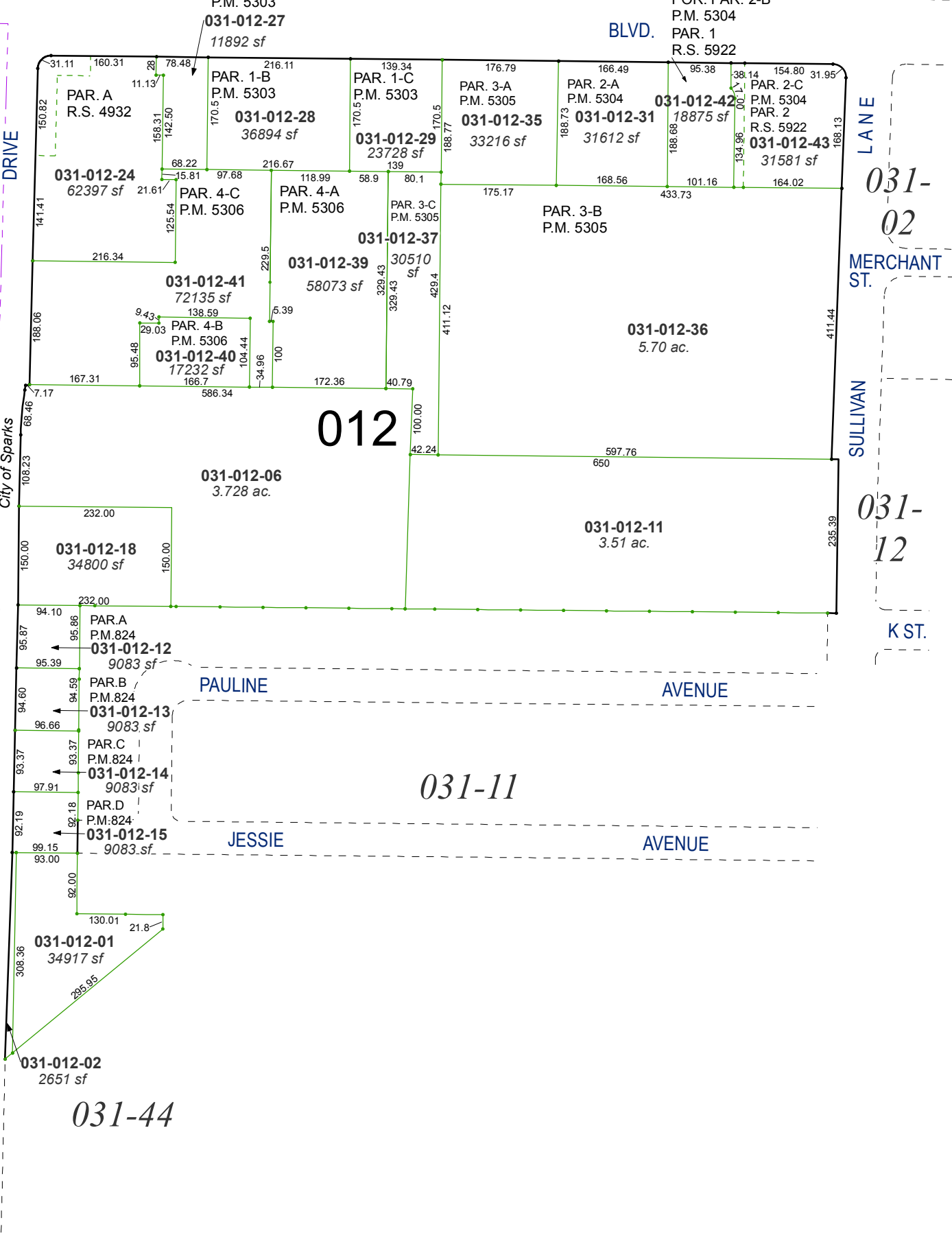
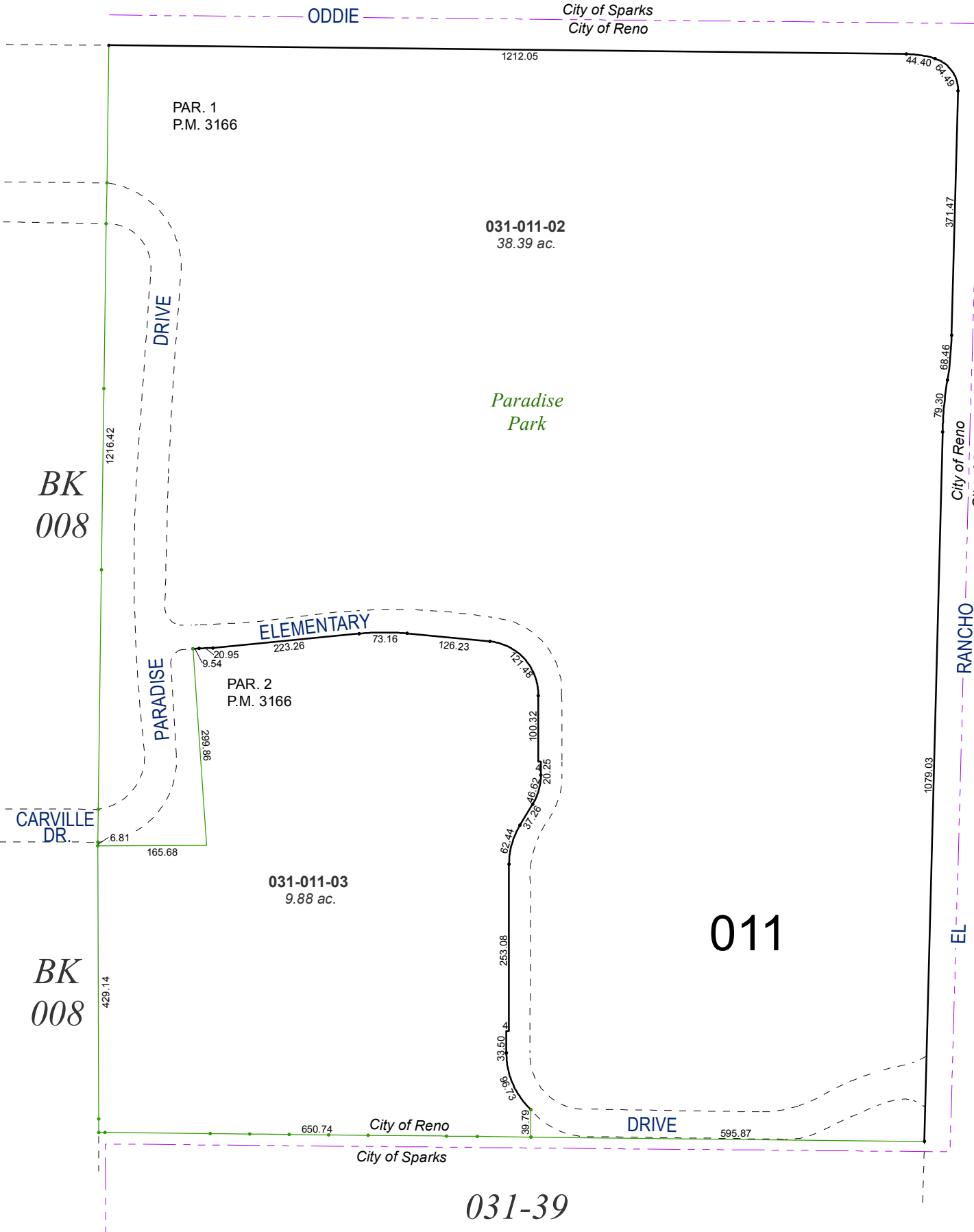
1 inch = 200 feet



created by: NLH 3/11/2010  
last updated: JKF 8/22/17 JKF 3/13/18

area previously shown on map(s)

NOTE: This map was prepared for the use of the Washoe County Assessor for assessment and illustrative purposes only. It does not represent a survey of the premises. No liability is assumed as to the sufficiency or accuracy of the data delineated hereon.



BK 008

BK 008

031-39

011

012

031-44

031-11

031-02

031-12

K ST.