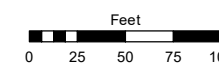
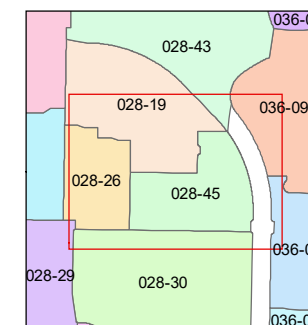
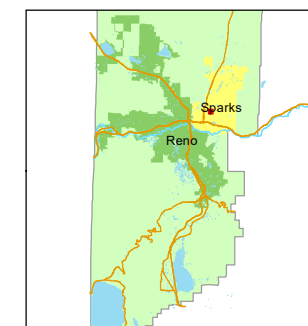


STATE OF NEVADA
WASHOE COUNTY
ASSESSOR'S OFFICE

1001 East Ninth Street, Building D
Reno, Nevada 89512
(775) 328-2231



1 inch = 100 feet



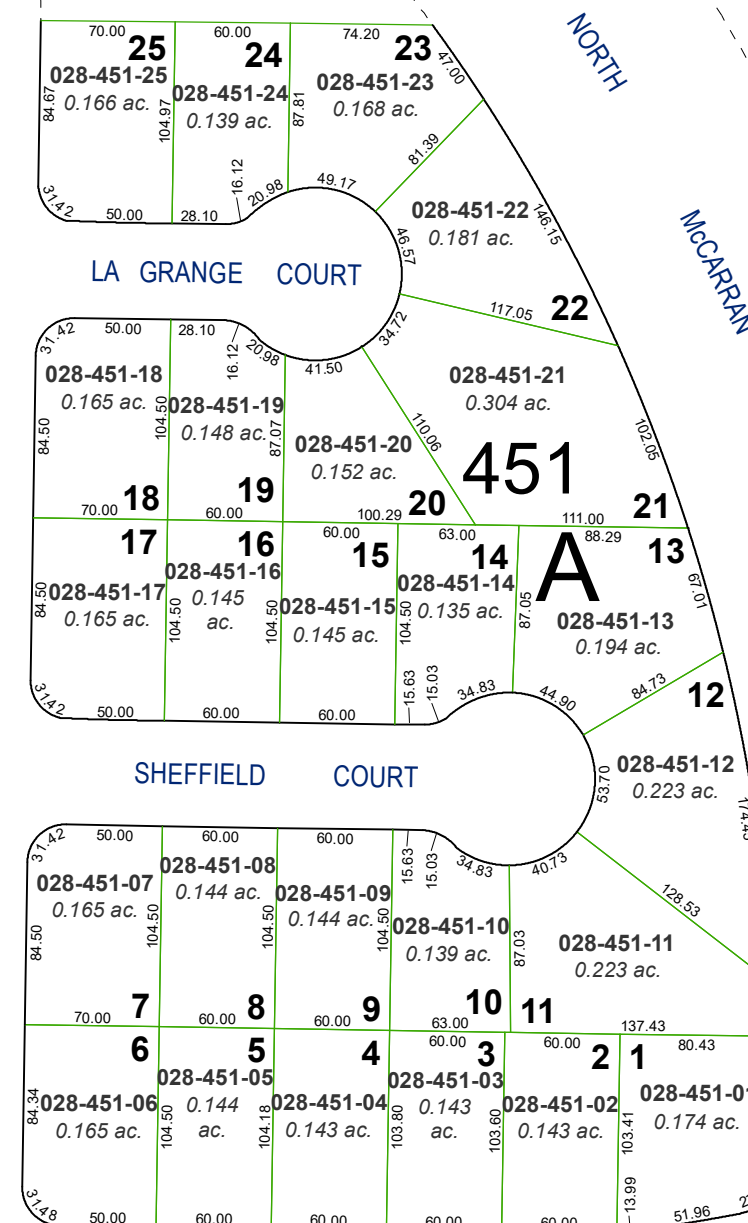
created by: SR 07/23/2019

updated: _____

area previously shown on map(s): _____

NOTE: This map was prepared for the use of the Washoe County Assessor for assessment and illustrative purposes only. It does not represent a survey of the premises. No liability is assumed as to the sufficiency or accuracy of the data delineated herein.

(#1817)
SHEFFIELD VILLAGE



(#1919)
PARKWOOD ESTATES SUBDIVISION
UNIT NO. 1

PORTION OF SE¼ SECTION 33
T20N - R20E

