

CRABAPPLE HOLLOW

(#1554)

MEADOWLANDS SUBDIVISION UNIT NO. 2-A

TEGLIA DRIVE

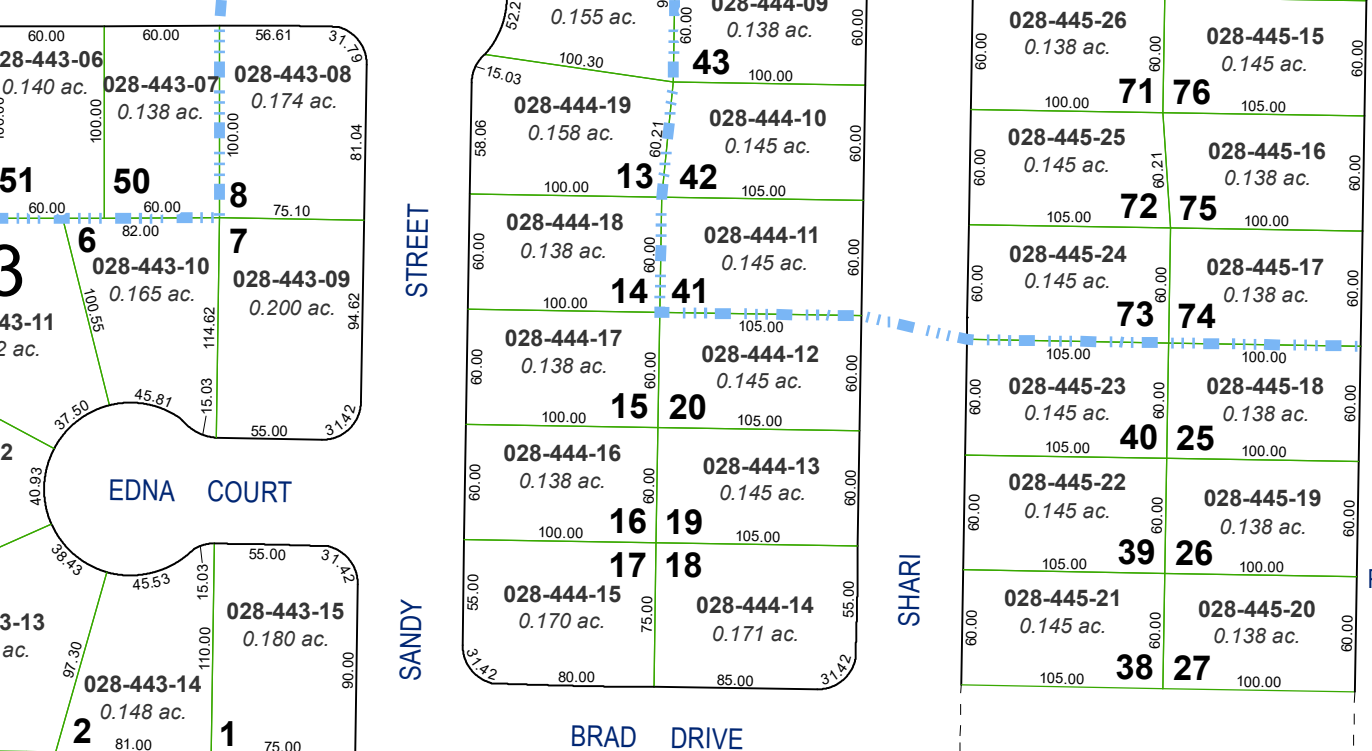
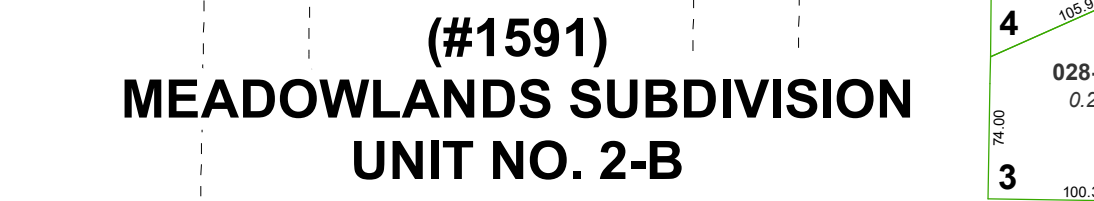
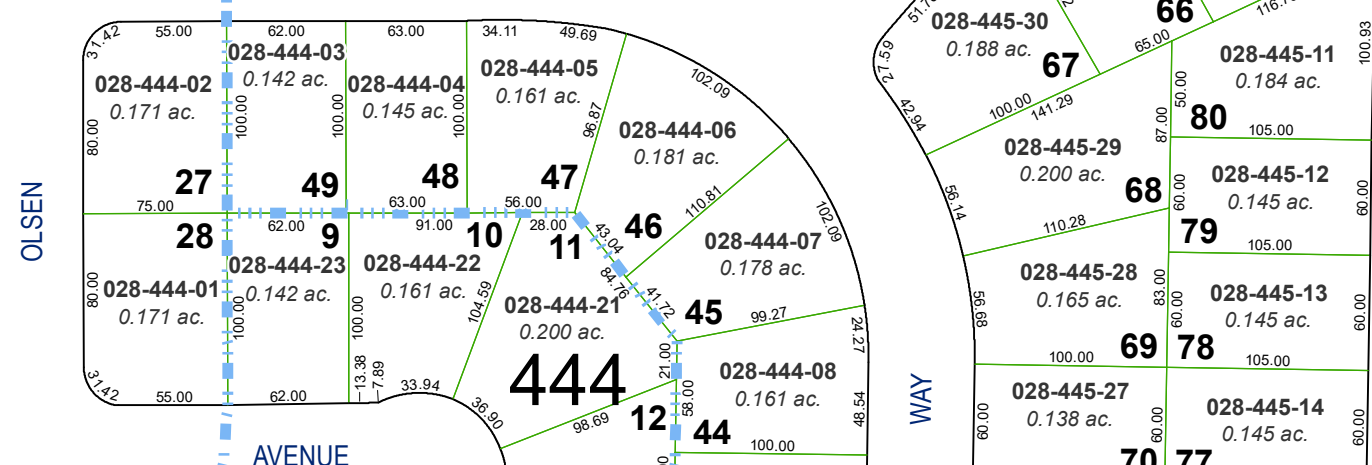
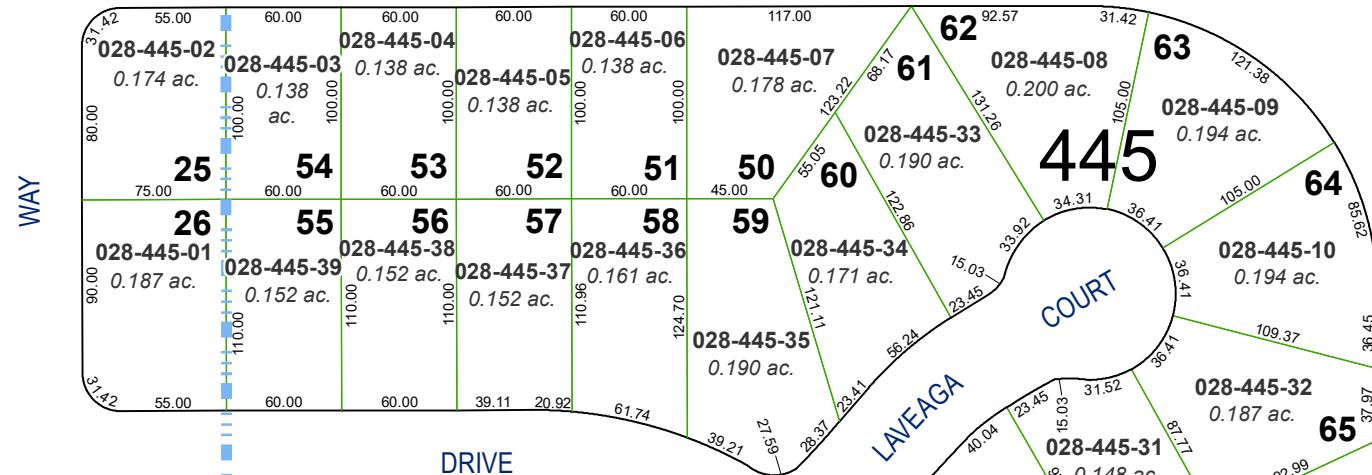
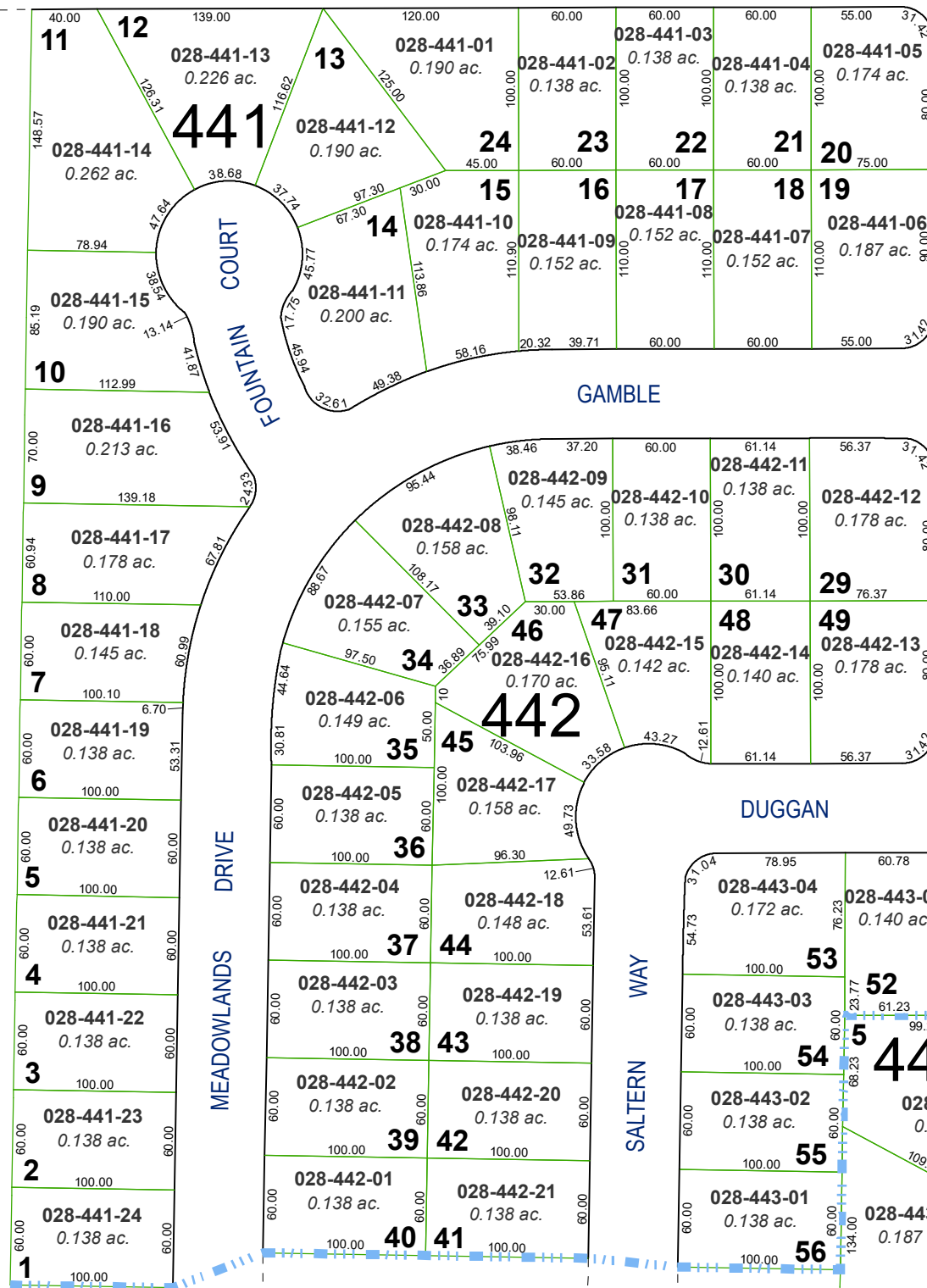
(#1592)

MEADOWLANDS SUBDIVISION UNIT NO. 2-C

PORTION OF NE 1/4 SECTION 33 T20N - R20E

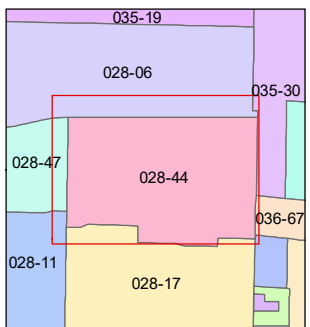
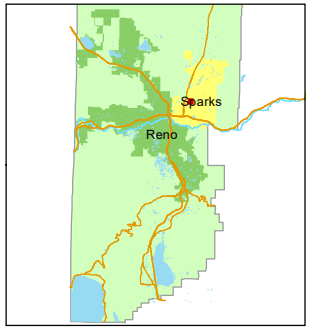
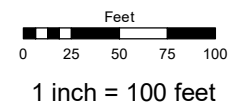
E. QUEEN WAY

WAY



Assessor's Map Number 028-44

STATE OF NEVADA WASHOE COUNTY ASSESSOR'S OFFICE 1001 East Ninth Street, Building D Reno, Nevada 89512 (775) 328-2231



created by: SR 07/23/2019 updated: area previously shown on map(s):

NOTE: This map was prepared for the use of the Washoe County Assessor for assessment and illustrative purposes only. It does not represent a survey of the premises. No liability is assumed as to the sufficiency or accuracy of the data delineated hereon.