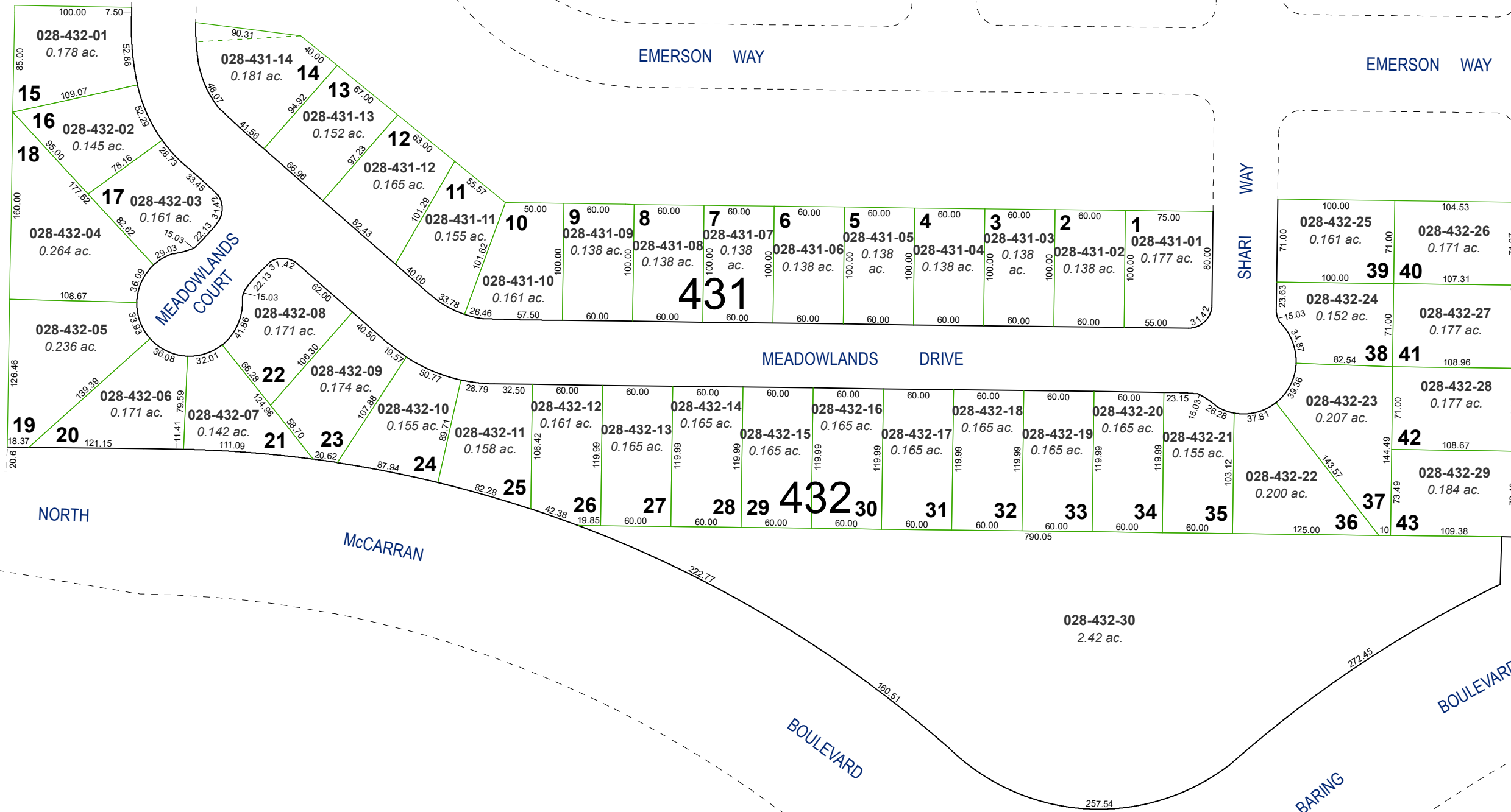


# (#1469) MEADOWLANDS SUBDIVISION UNIT NO. 3

PORTION OF E½ SECTION 33  
T20N - R20E

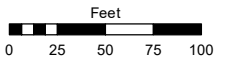


Assessor's Map Number

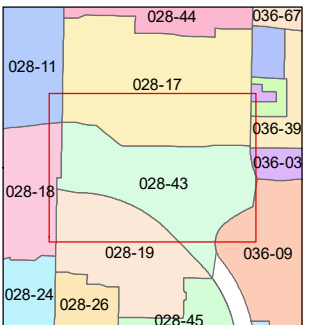
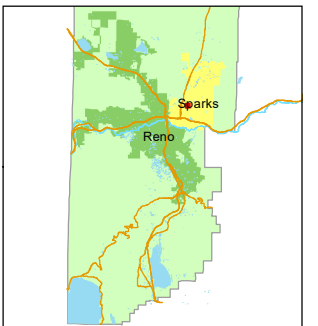
**028-43**

STATE OF NEVADA  
**WASHOE COUNTY**  
ASSESSOR'S OFFICE

1001 East Ninth Street, Building D  
Reno, Nevada 89512  
(775) 328-2231



1 inch = 100 feet



created by: SR 07/22/2019

updated: \_\_\_\_\_

area previously shown on map(s): \_\_\_\_\_

NOTE: This map was prepared for the use of the Washoe County Assessor for assessment and illustrative purposes only. It does not represent a survey of the premises. No liability is assumed as to the sufficiency or accuracy of the data delineated hereon.