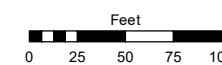
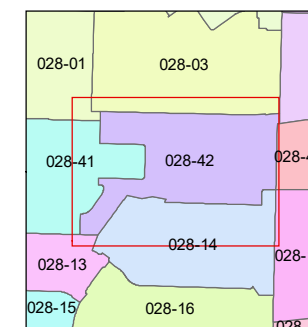
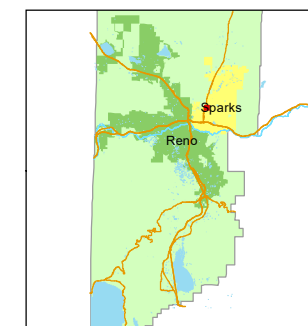


STATE OF NEVADA
WASHOE COUNTY
ASSESSOR'S OFFICE

1001 East Ninth Street, Building D
Reno, Nevada 89512
(775) 328-2231



1 inch = 100 feet



created by: SR 07/22/2019

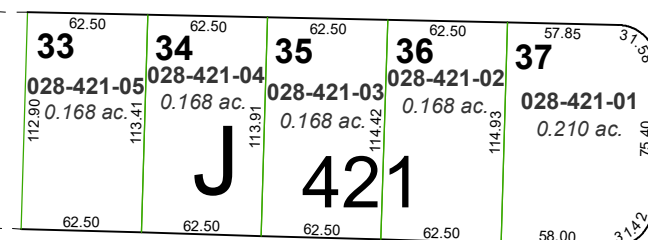
updated: _____

area previously shown on map(s): _____

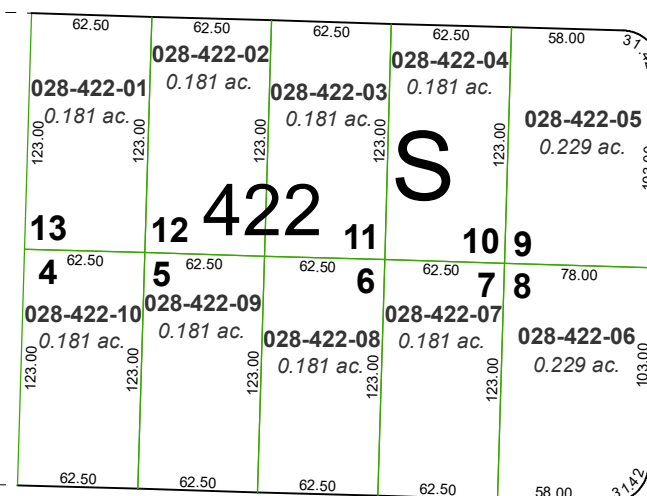
NOTE: This map was prepared for the use of the Washoe County Assessor for assessment and illustrative purposes only. It does not represent a survey of the premises. No liability is assumed as to the sufficiency or accuracy of the data delineated hereon.

DAWN CIRCLE

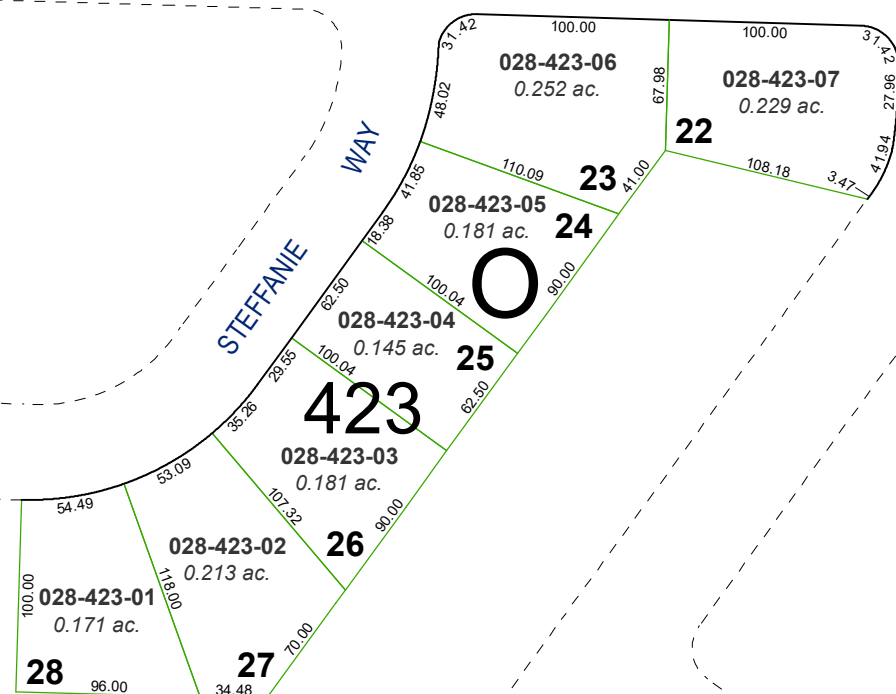
QUEEN WAY



MICHELE WAY



PENNY WAY



LENA JUNIPER
ELEMENTARY SCHOOL

AIMONE PARK

425

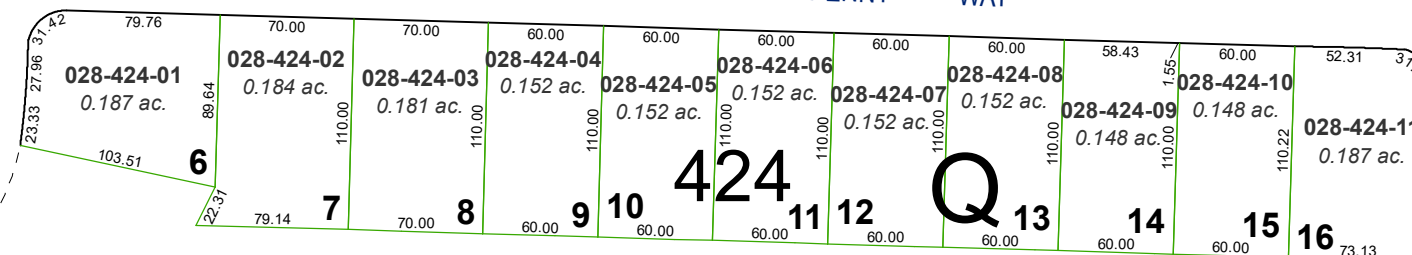
028-425-02
5.007 ac.

028-425-01
3.593 ac.

STREET

FOURTH

PENNY WAY



DANA WAY

(#1125)

VISTA DEL ORO SUBDIVISION
UNIT NO. 6-A

PORTION OF NW¼ SECTION 33
T20N - R20E