

PORTION OF NW ¼ SECTION 33, T20N - R20E

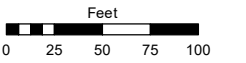
GWYNELLE CT.

Assessor's Map Number

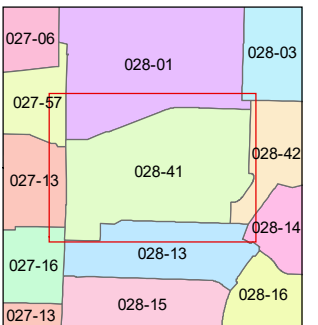
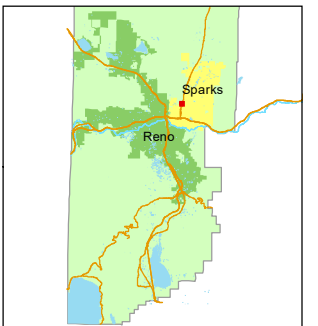
028-41

STATE OF NEVADA
WASHOE COUNTY
ASSESSOR'S OFFICE

1001 East Ninth Street, Building D
Reno, Nevada 89512
(775) 328-2231



1 inch = 100 feet

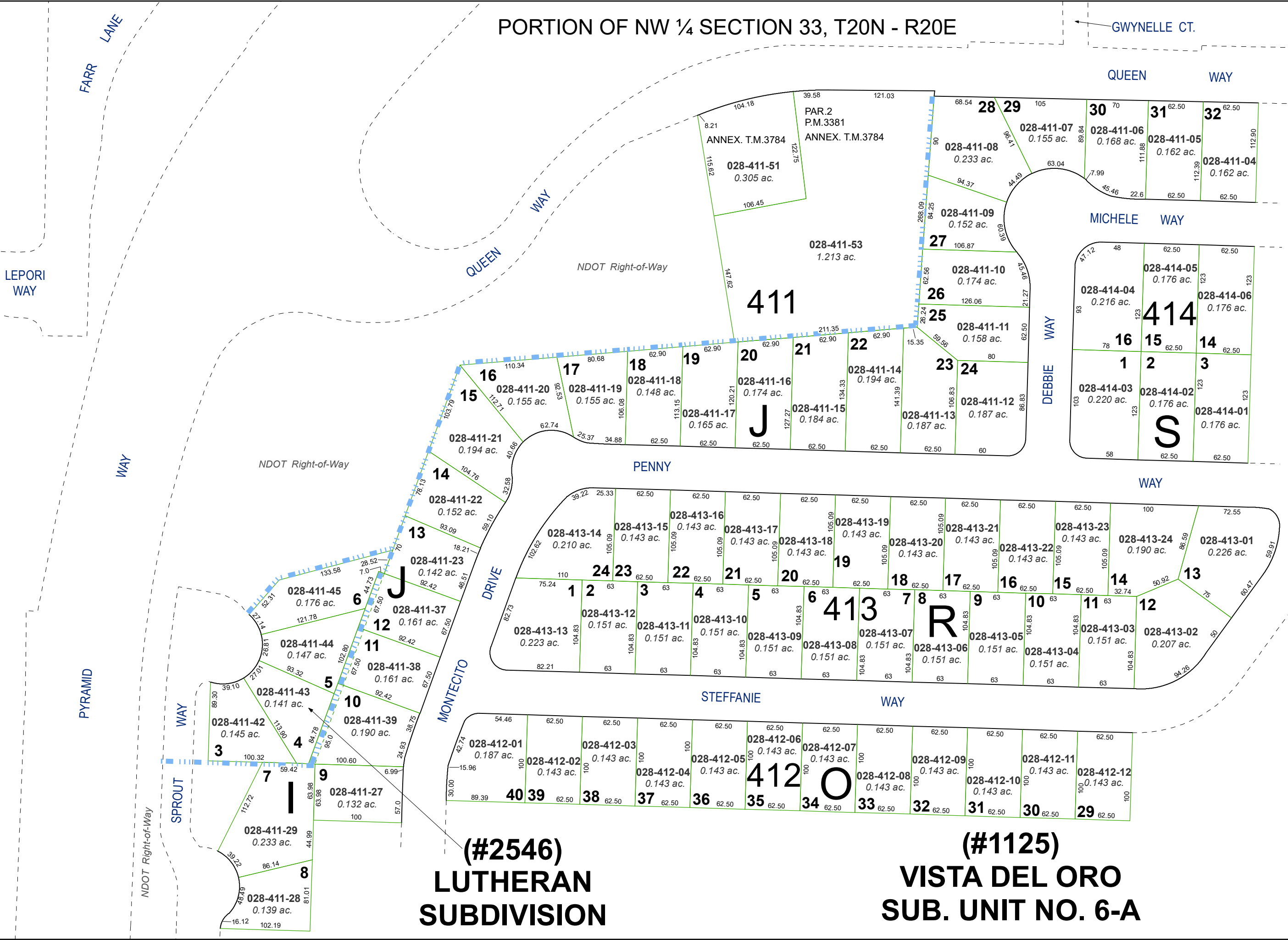


created by: CFB 12/06/2013

updated: KSB 11/12/20

area previously shown on map(s):

NOTE: This map was prepared for the use of the Washoe County Assessor for assessment and illustrative purposes only. It does not represent a survey of the premises. No liability is assumed as to the sufficiency or accuracy of the data delineated hereon.



(#2546)
LUTHERAN
SUBDIVISION

(#1125)
VISTA DEL ORO
SUB. UNIT NO. 6-A