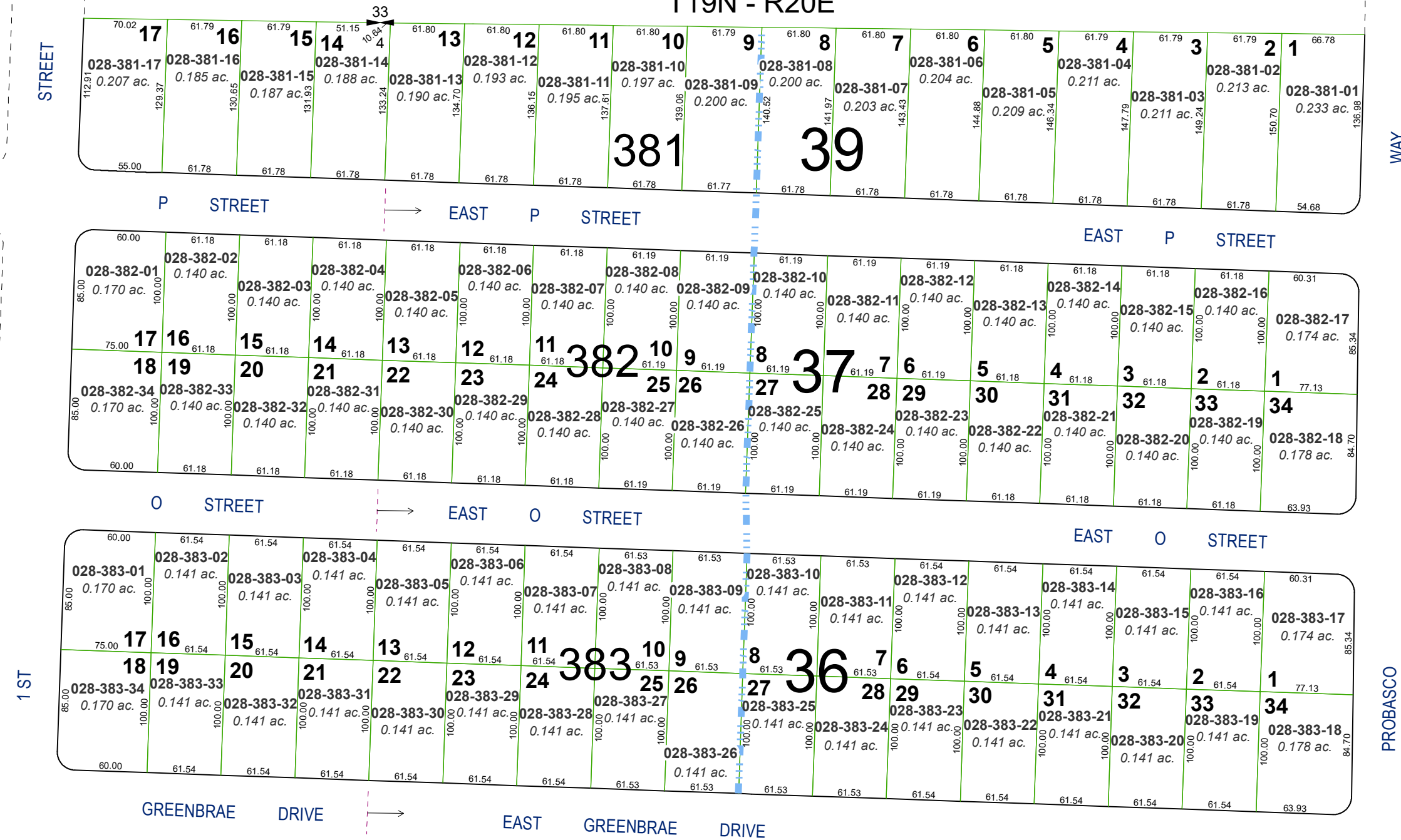


**(#506)
GREEN BRAE TERRACE
SUBDIVISION
ADDITION NO. 8**

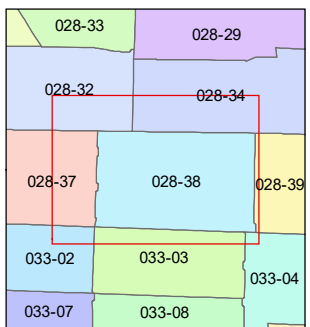
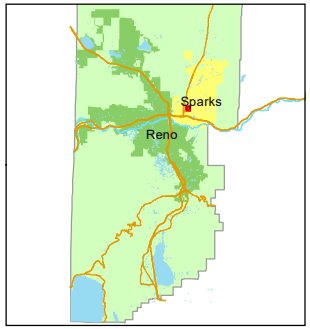
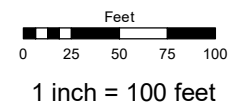
**(#516)
GREEN BRAE TERRACE
SUBDIVISION
ADDITION NO. 9**

PORTION OF S½ SECTION 4
T19N - R20E



Assessor's Map Number
028-38

STATE OF NEVADA
**WASHOE COUNTY
ASSESSOR'S OFFICE**
1001 East Ninth Street, Building D
Reno, Nevada 89512
(775) 328-2231



created by: SR 07/19/2019
updated: _____
area previously shown on map(s): _____

NOTE: This map was prepared for the use of the Washoe County Assessor for assessment and illustrative purposes only. It does not represent a survey of the premises. No liability is assumed as to the sufficiency or accuracy of the data delineated hereon.