

**(#505)
GREEN BRAE TERRACE SUBDIVISION
ADDITION NO. 7**

PORTION OF NW¼ SECTION 4
T19N - R20E

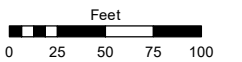
**(#506)
GREEN BRAE TERRACE
SUBDIVISION
ADDITION NO. 8**

Assessor's Map Number

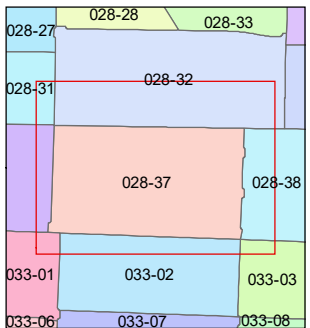
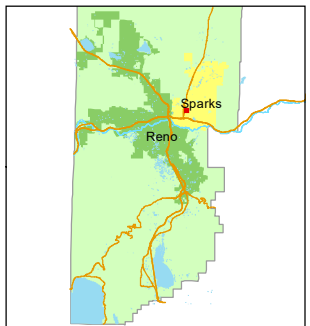
028-37

STATE OF NEVADA
**WASHOE COUNTY
ASSESSOR'S OFFICE**

1001 East Ninth Street, Building D
Reno, Nevada 89512
(775) 328-2231



1 inch = 100 feet

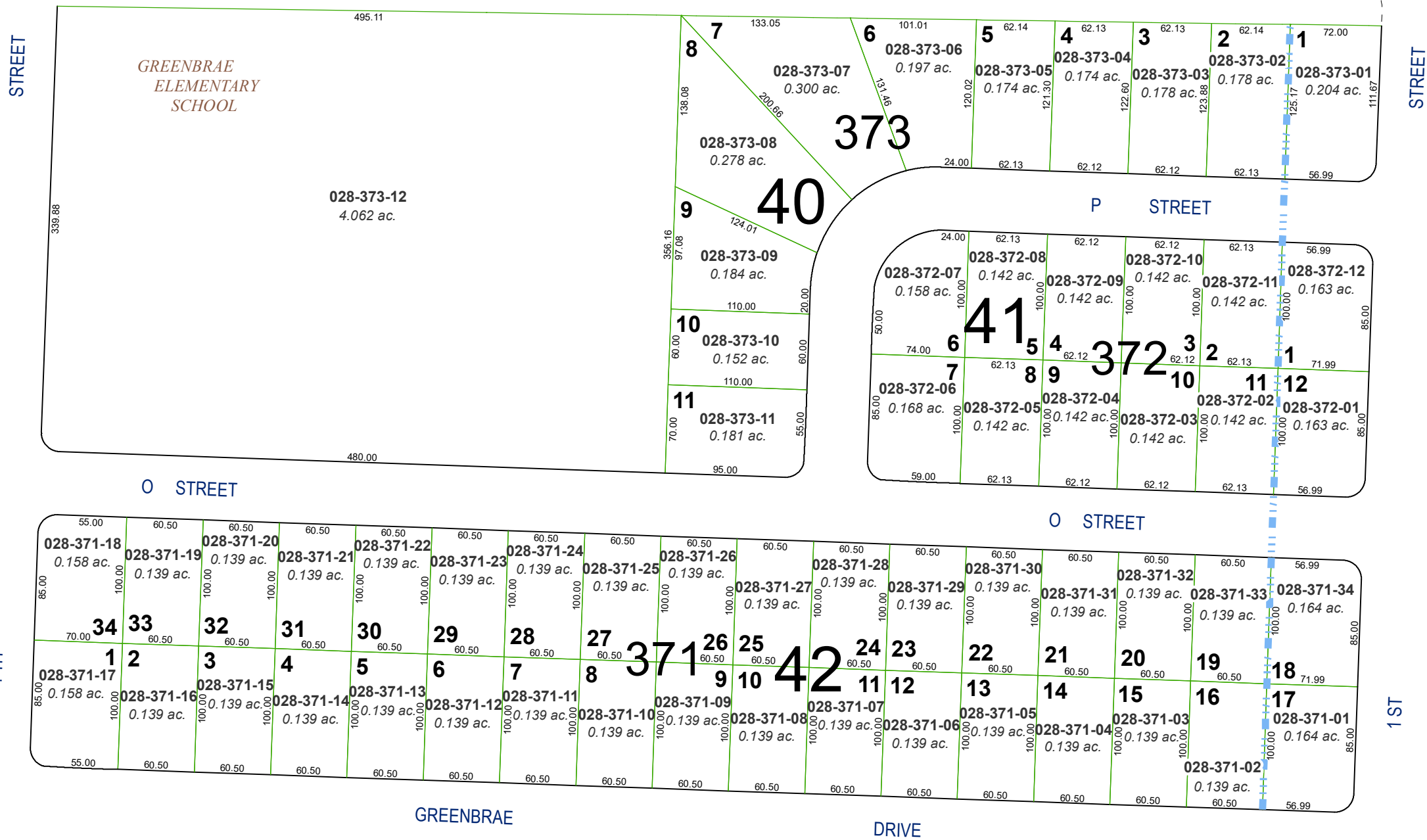


created by: SR 07/16/2019

updated: _____

area previously shown on map(s): _____

NOTE: This map was prepared for the use of the Washoe County Assessor for assessment and illustrative purposes only. It does not represent a survey of the premises. No liability is assumed as to the sufficiency or accuracy of the data delineated hereon.



NOTE: This map was prepared for the use of the Washoe County Assessor for assessment and illustrative purposes only. It does not represent a survey of the premises. No liability is assumed as to the sufficiency or accuracy of the data delineated hereon.