

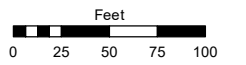
PORTION OF SW¼ SECTION 33 T20N - R20E

Assessor's Map Number

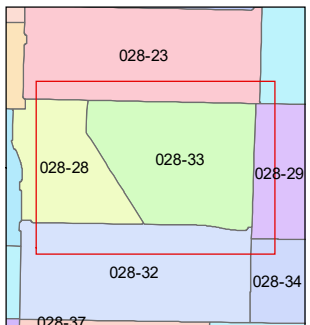
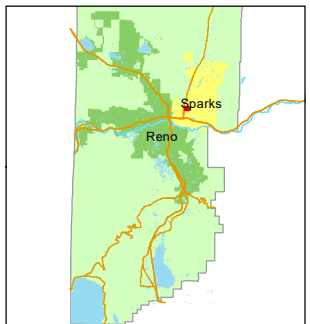
028-33

STATE OF NEVADA
WASHOE COUNTY
ASSESSOR'S OFFICE

1001 East Ninth Street, Building D
Reno, Nevada 89512
(775) 328-2231



1 inch = 100 feet

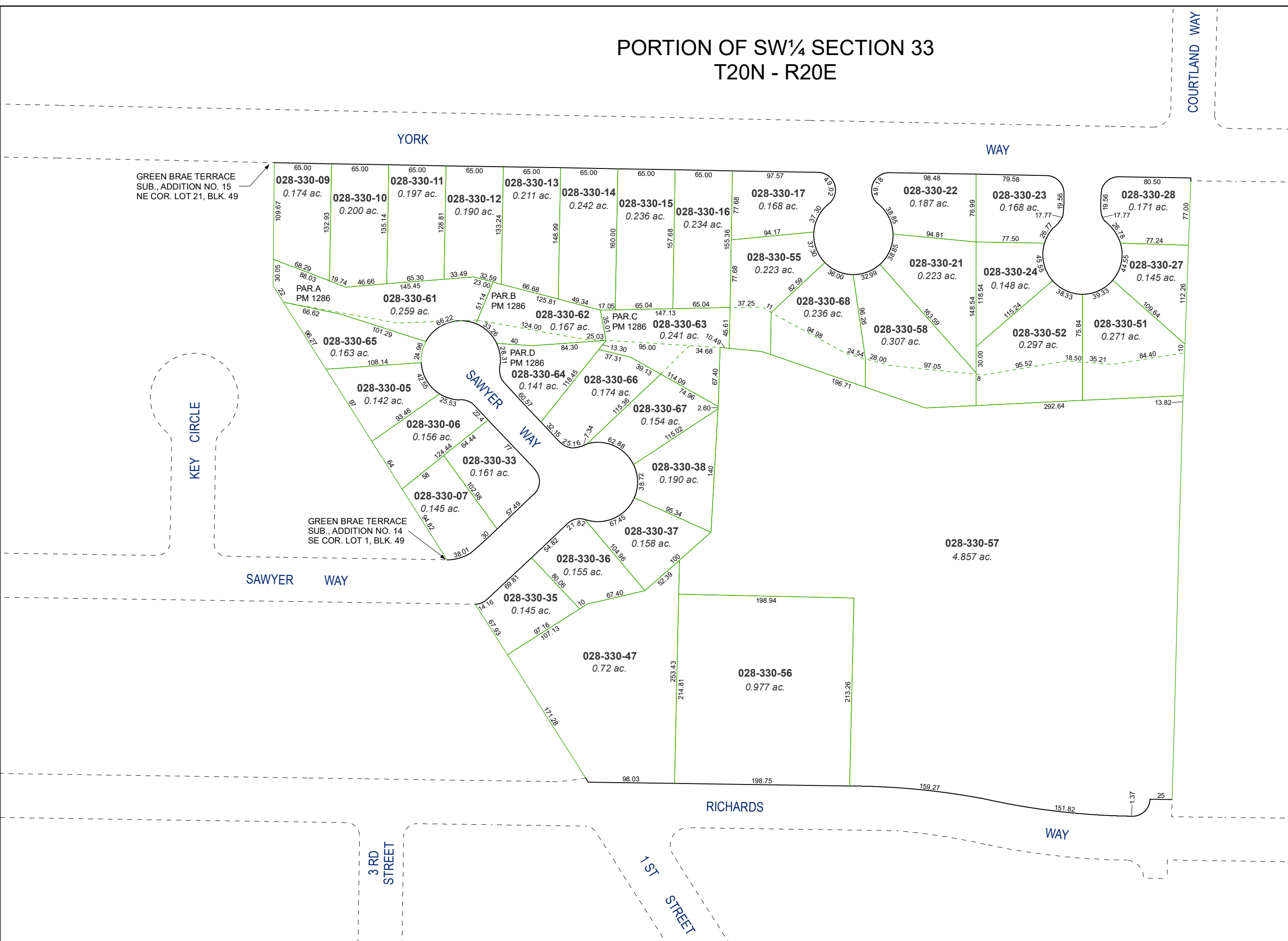


created by: SR 07/16/2019

updated: _____

area previously shown on map(s): _____

NOTE: This map was prepared for the use of the Washoe County Assessor for assessment and illustrative purposes only. It does not represent a survey of the premises. No liability is assumed as to the sufficiency or accuracy of the data delineated hereon.



GREEN BRAE TERRACE SUB., ADDITION NO. 15 NE COR. LOT 21, BLK. 49

GREEN BRAE TERRACE SUB., ADDITION NO. 14 SE COR. LOT 1, BLK. 49