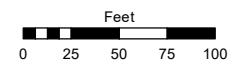


(#511) MONGOLO SUBDIVISION

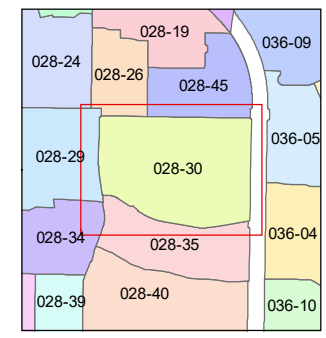
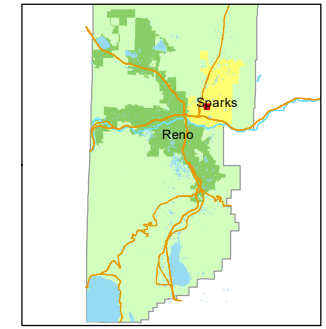
POR. OF SE 1/4 OF THE SE 1/4 OF SECTION 33, T20N - R20E

Assessor's Map Number
028-30

STATE OF NEVADA
WASHOE COUNTY
ASSESSOR'S OFFICE
1001 East Ninth Street, Building D
Reno, Nevada 89512
(775) 328-2231



1 inch = 100 feet



created by: CFB 04/24/2013
updated: CFB 02/04/2014 JRA 9/15/21

area previously shown on map(s):

NOTE: This map was prepared for the use of the Washoe County Assessor for assessment and illustrative purposes only. It does not represent a survey of the premises. No liability is assumed as to the sufficiency or accuracy of the data delineated hereon.



BLVD
NORTH MC CARRAN

BOISE DRIVE

E. YORK

WAY

WAY

MONGOLO

BUCKEY

DR.