

COURTLAND WAY

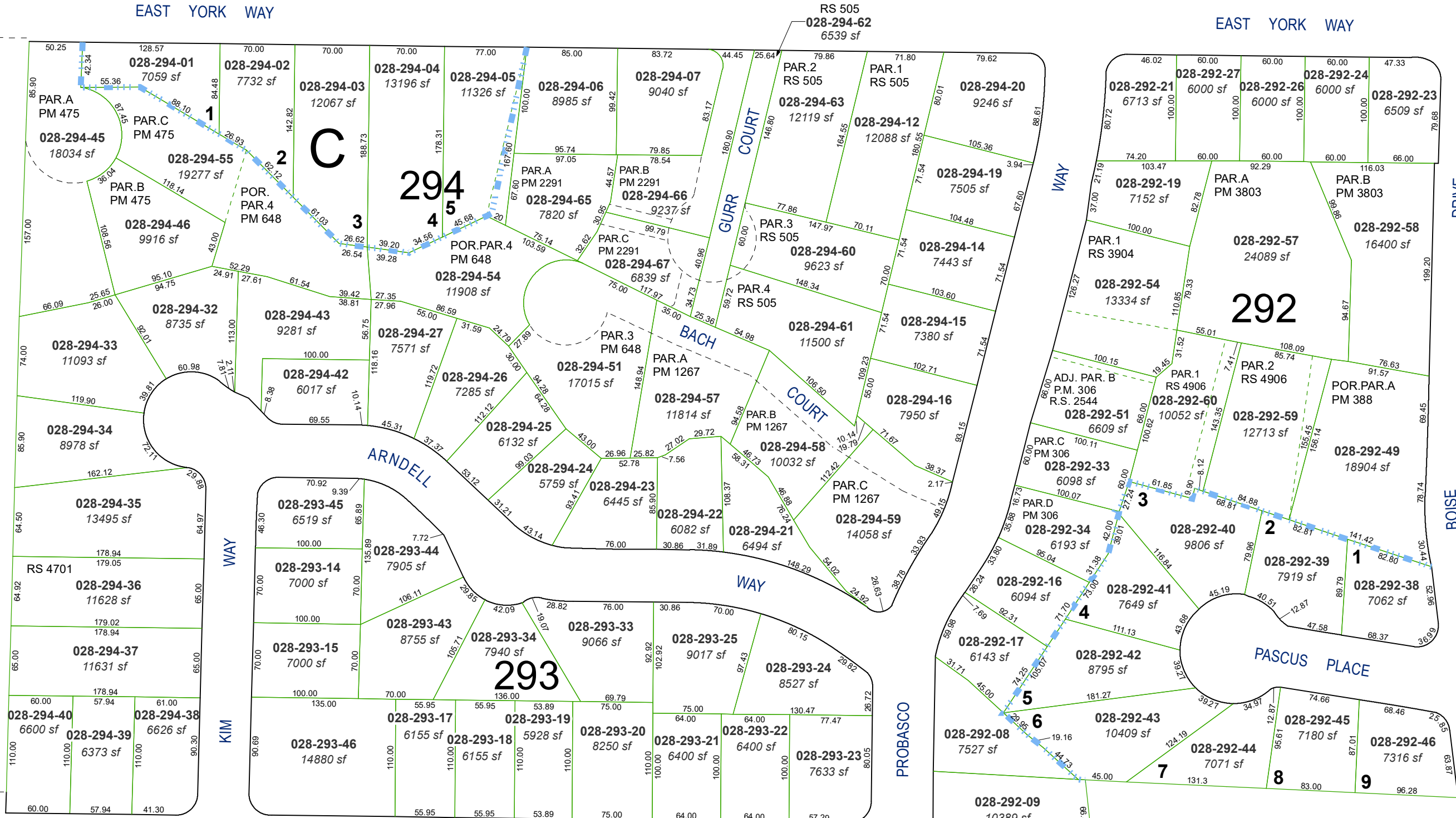
(#767) BARKER SUBDIVISION UNIT NO. 2

PORTION OF SE¼ SECTION 33
T20N - R20E

BAXTER WAY

EAST YORK WAY

EAST YORK WAY



E. RICHARDS WAY

E. RICHARDS WAY

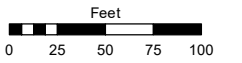
(#1648) PASCUS SUBDIVISION

Assessor's Map Number

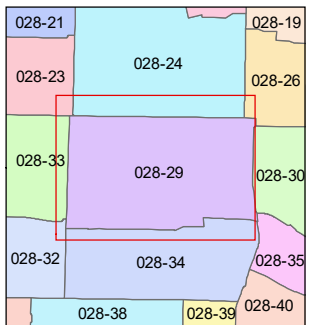
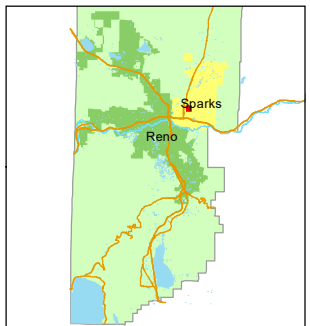
028-29

STATE OF NEVADA
WASHOE COUNTY
ASSESSOR'S OFFICE

1001 East Ninth Street, Building D
Reno, Nevada 89512
(775) 328-2231



1 inch = 100 feet



created by: SR 07/16/2019

updated: _____

area previously shown on map(s): _____

NOTE: This map was prepared for the use of the Washoe County Assessor for assessment and illustrative purposes only. It does not represent a survey of the premises. No liability is assumed as to the sufficiency or accuracy of the data delineated hereon.