

# GREENBRAE TERRACE SUBDIVISIONS

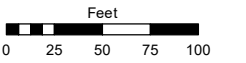
PORTION OF SW 1/4 SECTION 33, T20N - R20E

Assessor's Map Number

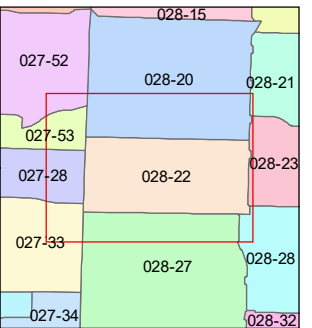
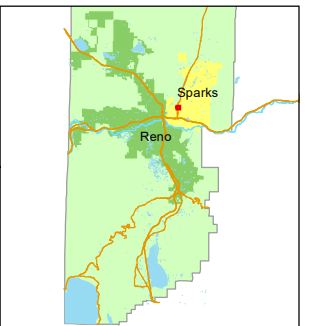
**028-22**

STATE OF NEVADA  
**WASHOE COUNTY**  
**ASSESSOR'S OFFICE**

1001 East Ninth Street, Building D  
 Reno, Nevada 89512  
 (775) 328-2231



1 inch = 100 feet



created by: CFB 12/06/2013

updated: KSB 11/12/20

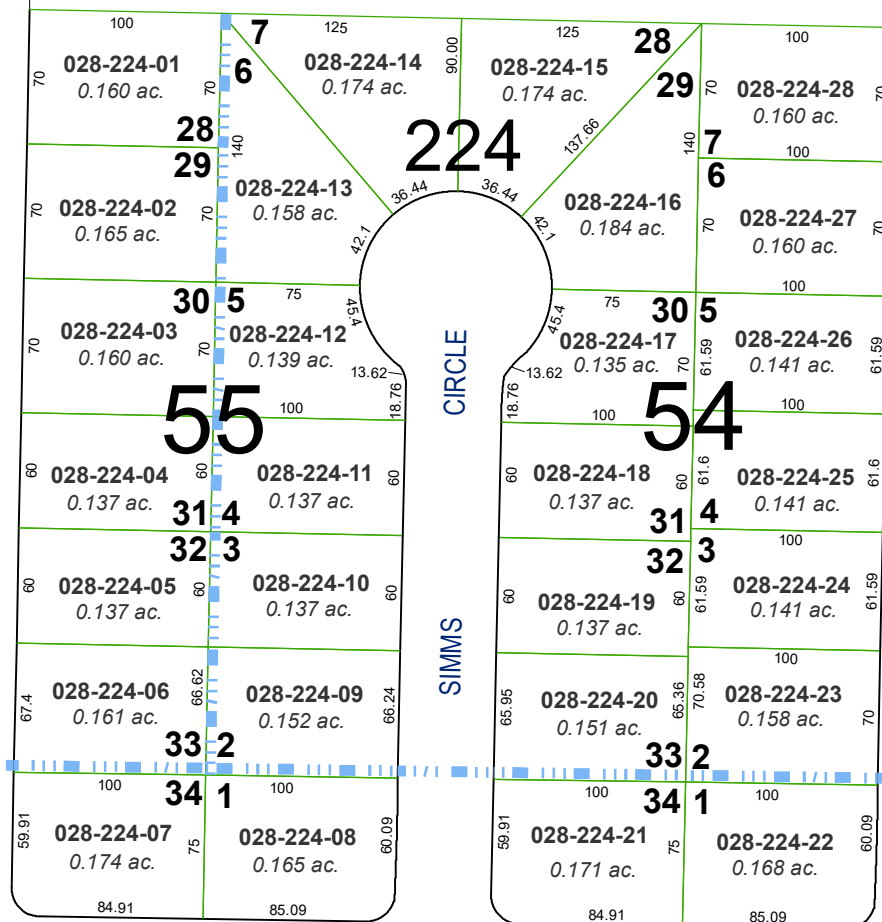
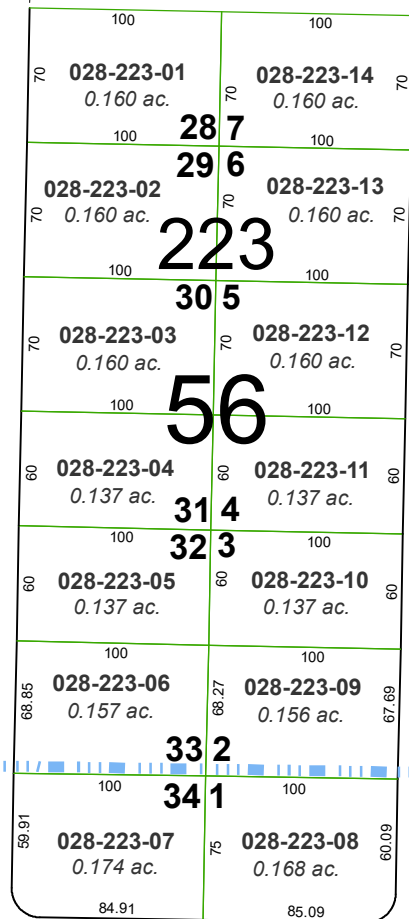
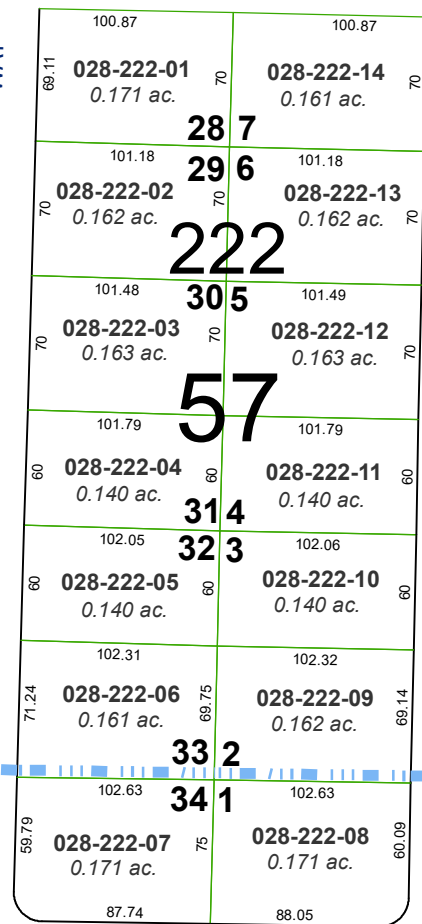
area previously shown on map(s):

NOTE: This map was prepared for the use of the Washoe County Assessor for assessment and illustrative purposes only. It does not represent a survey of the premises. No liability is assumed as to the sufficiency or accuracy of the data delineated hereon.

## (#680) ADDITION NO.17

## (#654) ADDITION NO.16

## (#640) ADDITION NO.15



ROBERTA LANE

WAY

WAY

WAY

WAY

STREET

NDOT  
Right-of-Way

PYRAMID

NELSON

STINE

COPPA

CIRCLE

SIMMS

4 TH

YORK

WAY