

GREENBRAE TERRACE SUBDIVISIONS

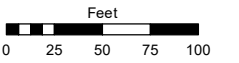
PORTION OF SW 1/4 SECTION 33, T20N - R20E

Assessor's Map Number

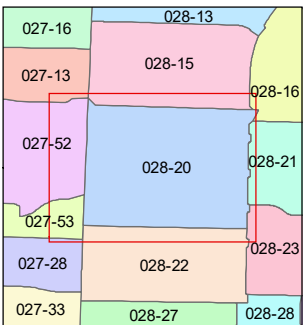
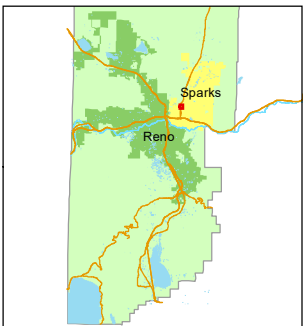
028-20

STATE OF NEVADA
WASHOE COUNTY
ASSESSOR'S OFFICE

1001 East Ninth Street, Building D
Reno, Nevada 89512
(775) 328-2231



1 inch = 100 feet



created by: CFB 12/06/2013

updated: KSB 11/12/20

area previously shown on map(s):

NOTE: This map was prepared for the use of the Washoe County Assessor for assessment and illustrative purposes only. It does not represent a survey of the premises. No liability is assumed as to the sufficiency or accuracy of the data delineated hereon.

NORTH

McCARRAN

BOULEVARD

NDOT Right-of-Way

GAULT

WAY

83.39	83.08
028-204-10 0.171 ac.	028-204-11 0.171 ac.
18	17
98.48	98.49
028-204-09 0.148 ac.	028-204-12 0.148 ac.
19	16
98.75	98.76
028-204-08 0.139 ac.	028-204-13 0.139 ac.
20	15
99.02	99.02
028-204-07 0.138 ac.	028-204-14 0.138 ac.
21	14
99.28	99.29
028-204-06 0.138 ac.	028-204-15 0.138 ac.
57	13
99.55	99.55
028-204-05 0.138 ac.	028-204-16 0.138 ac.
23	12
99.81	99.82
028-204-04 0.138 ac.	028-204-17 0.138 ac.
24	11
100.08	100.08
028-204-03 0.138 ac.	028-204-18 0.138 ac.
25	10
100.34	100.34
028-204-02 0.138 ac.	028-204-19 0.138 ac.
26	9
100.60	100.61
028-204-01 0.141 ac.	028-204-20 0.141 ac.
27	8
100.87	100.87

WAY

85.09	84.91
028-205-10 0.171 ac.	028-205-11 0.171 ac.
18	17
100	100
028-205-09 0.153 ac.	028-205-12 0.154 ac.
19	16
100	100
028-205-08 0.137 ac.	028-205-13 0.137 ac.
20	15
100	100
028-205-07 0.137 ac.	028-205-14 0.137 ac.
21	14
100	100
028-205-06 0.137 ac.	028-205-15 0.137 ac.
56	13
100	100
028-205-05 0.137 ac.	028-205-16 0.137 ac.
23	12
100	100
028-205-04 0.137 ac.	028-205-17 0.137 ac.
24	11
100	100
028-205-03 0.137 ac.	028-205-18 0.137 ac.
25	10
100	100
028-205-02 0.137 ac.	028-205-19 0.137 ac.
26	9
100	100
028-205-01 0.137 ac.	028-205-20 0.137 ac.
27	8
100	100

WAY

85.09	334.92
028-206-10 0.171 ac.	
18	
100	
028-206-09 0.154 ac.	
19	
100	
028-206-08 0.137 ac.	
20	
100	
028-206-07 0.137 ac.	
21	
100	
028-206-06 0.137 ac.	028-206-11 4.82 ac.
55	22
100	
028-206-05 0.137 ac.	206
23	
100	
028-206-04 0.137 ac.	
24	
100	
028-206-03 0.137 ac.	
25	
100	
028-206-02 0.137 ac.	
26	
100	
028-206-01 0.137 ac.	
27	
100	

*Florence Drake
Elementary School*

206

350

ROBERTA LANE

PYRAMID

WAY

NDOT Right-of-Way

NELSON

WAY

STINE

COPPA

STREET

DEVERE
WAY

GALLERON
WAY

4 TH

(#680)
ADDITION NO. 17

(#654)
ADDITION NO. 16