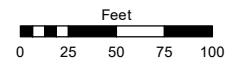


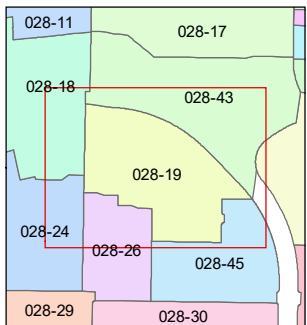
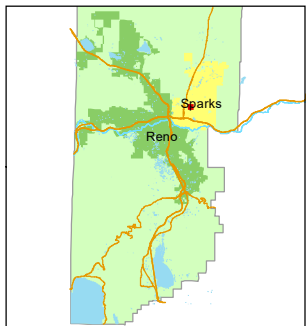
**(#1938)**  
**PARKWOOD ESTATES SUBDIVISION**  
**UNIT NO. 2**  
 PORTION OF SE¼ SECTION 33  
 T20N - R20E

Assessor's Map Number  
**028-19**

STATE OF NEVADA  
**WASHOE COUNTY**  
**ASSESSOR'S OFFICE**  
 1001 East Ninth Street, Building D  
 Reno, Nevada 89512  
 (775) 328-2231



1 inch = 100 feet

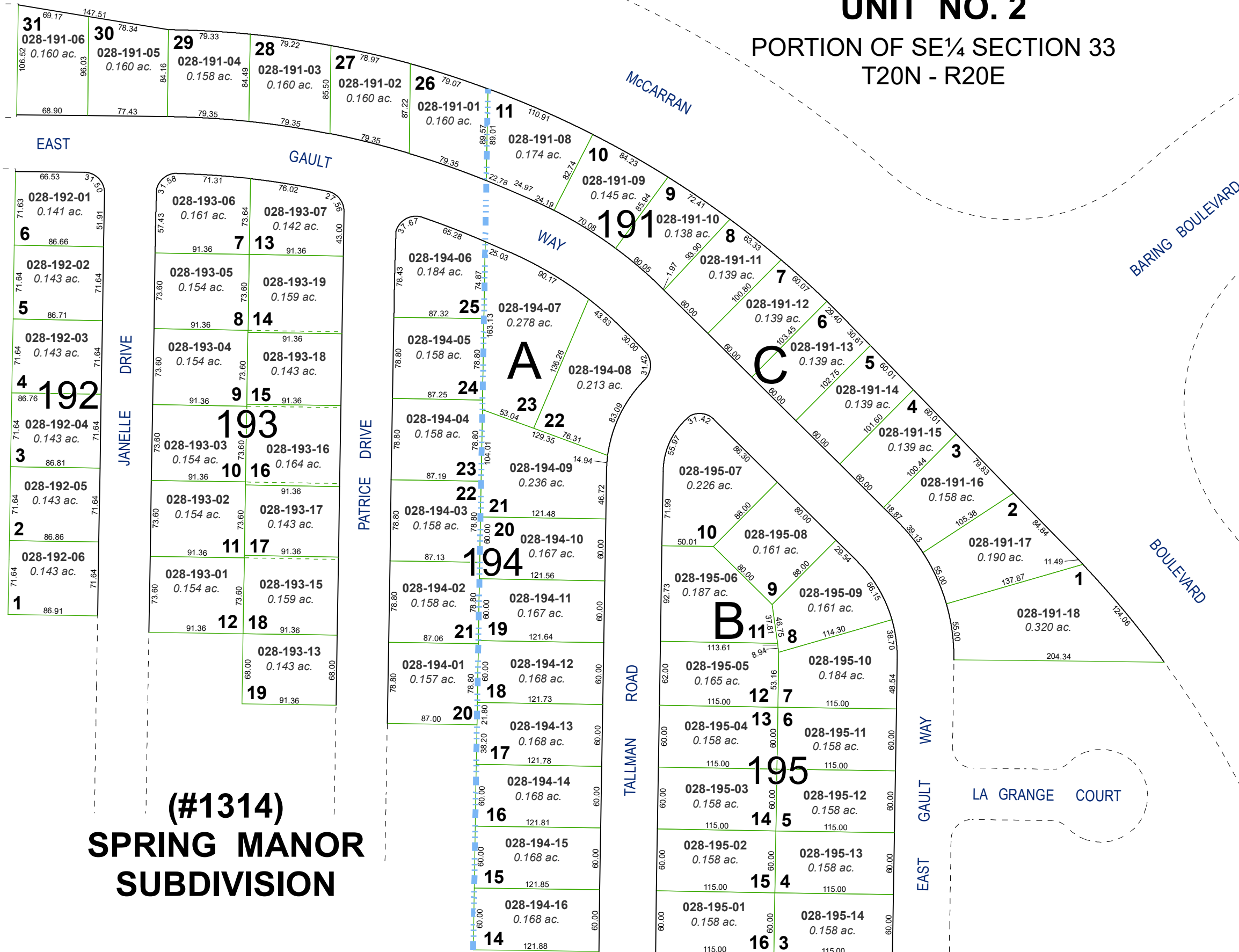


created by: SR 04/15/2019

updated: \_\_\_\_\_

area previously shown on map(s): \_\_\_\_\_

NOTE: This map was prepared for the use of the Washoe County Assessor for assessment and illustrative purposes only. It does not represent a survey of the premises. No liability is assumed as to the sufficiency or accuracy of the data delineated hereon.



**(#1314)**  
**SPRING MANOR**  
**SUBDIVISION**