

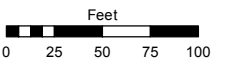
**(#1347)
MEADOWLANDS
SUBDIVISION UNIT NO. 1**

**(#1591)
MEADOWLANDS
SUBDIVISION UNIT NO. 2-B
PORTION OF NE¼ SECTION 33
T20N - R20E**

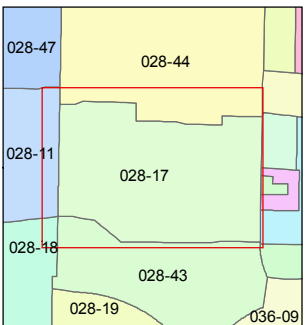
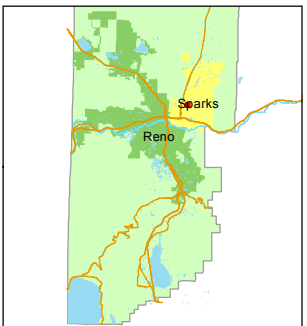
Assessor's Map Number

028-17

STATE OF NEVADA
WASHOE COUNTY
ASSESSOR'S OFFICE
1001 East Ninth Street, Building D
Reno, Nevada 89512
(775) 328-2231



1 inch = 100 feet



created by: SR 04/08/2019

updated: _____

area previously shown on map(s): _____

NOTE: This map was prepared for the use of the Washoe County Assessor for assessment and illustrative purposes only. It does not represent a survey of the premises. No liability is assumed as to the sufficiency or accuracy of the data delineated hereon.

