

# VISTA DEL ORO SUBDIVISIONS

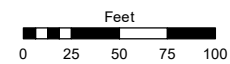
PORTION OF W 1/2 SECTION 33  
T20N - R20E

(#1170)  
UNIT NO. 6-B

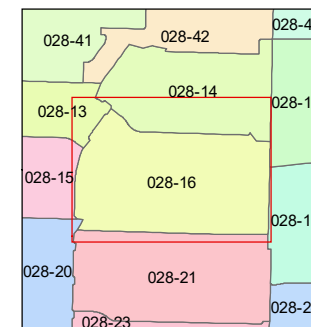
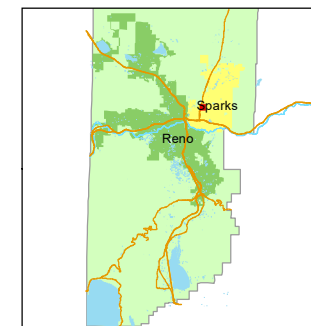
(#957)  
UNIT NO. 6

(#802)  
UNIT NO. 5-A

STATE OF NEVADA  
**WASHOE COUNTY**  
ASSESSOR'S OFFICE  
1001 East Ninth Street, Building D  
Reno, Nevada 89512  
(775) 328-2231



1 inch = 100 feet

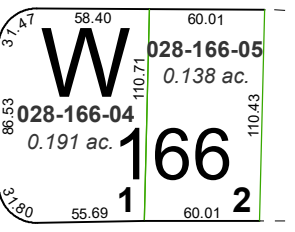
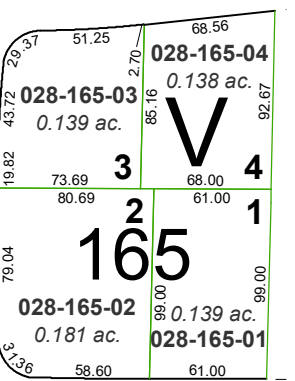
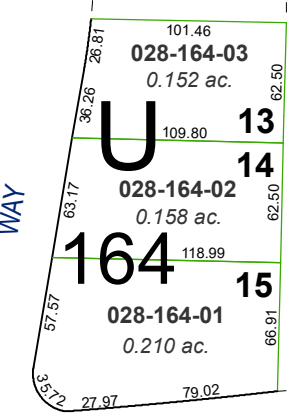
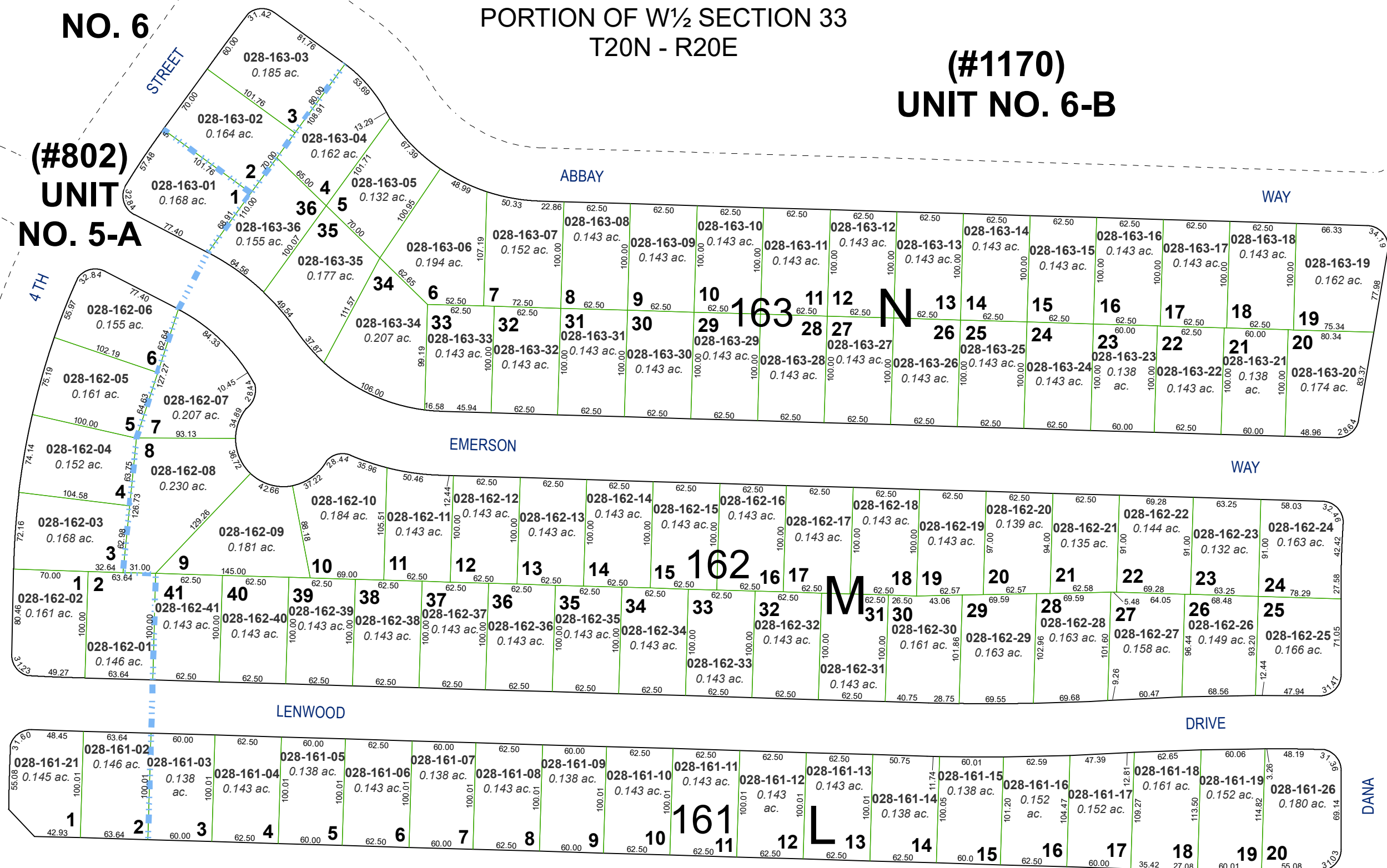


created by: SR 04/08/2019

updated: \_\_\_\_\_

area previously shown on map(s): \_\_\_\_\_

NOTE: This map was prepared for the use of the Washoe County Assessor for assessment and illustrative purposes only. It does not represent a survey of the premises. No liability is assumed as to the sufficiency or accuracy of the data delineated hereon.



NORTH McCARRAN BOULEVARD