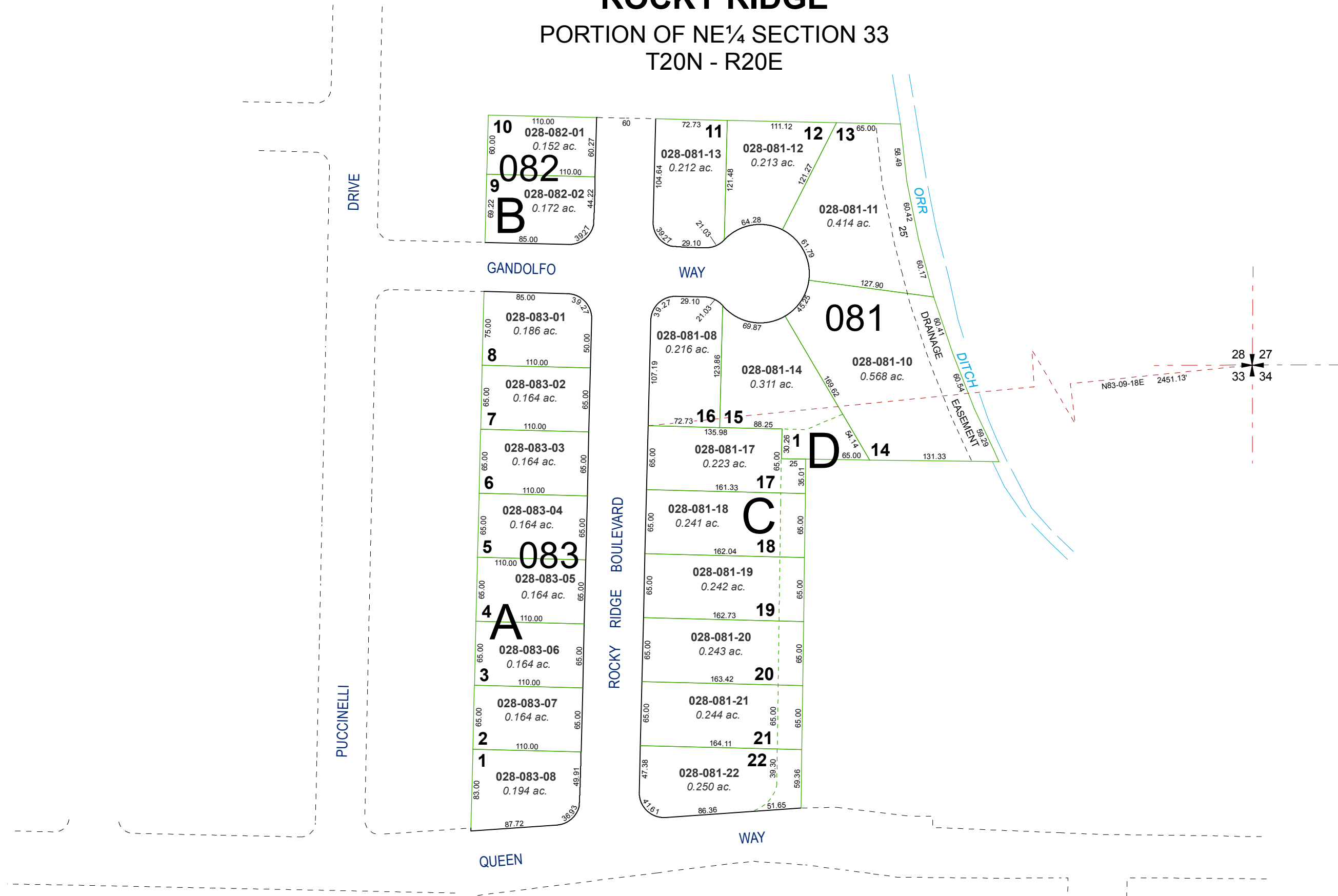


(#2428)
ROCKY RIDGE
 PORTION OF NE¼ SECTION 33
 T20N - R20E

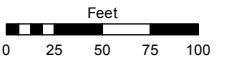


Assessor's Map Number

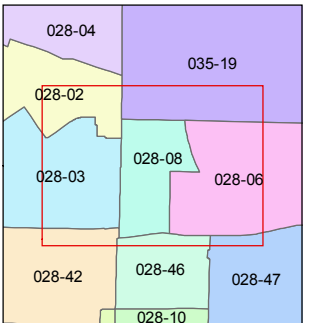
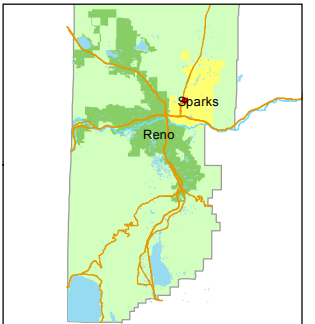
028-08

STATE OF NEVADA
WASHOE COUNTY
ASSESSOR'S OFFICE

1001 East Ninth Street, Building D
 Reno, Nevada 89512
 (775) 328-2231



1 inch = 100 feet



created by: SR 04/04/2019

updated: _____

area previously shown on map(s): _____

NOTE: This map was prepared for the use of the Washoe County Assessor for assessment and illustrative purposes only. It does not represent a survey of the premises. No liability is assumed as to the sufficiency or accuracy of the data delineated hereon.