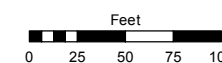
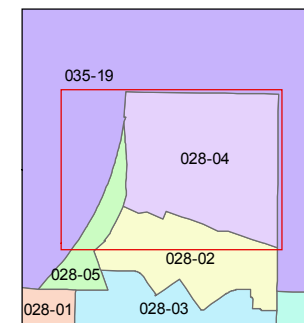
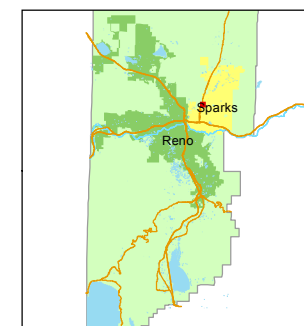


STATE OF NEVADA
WASHOE COUNTY
ASSESSOR'S OFFICE

1001 East Ninth Street, Building D
Reno, Nevada 89512
(775) 328-2231



1 inch = 100 feet

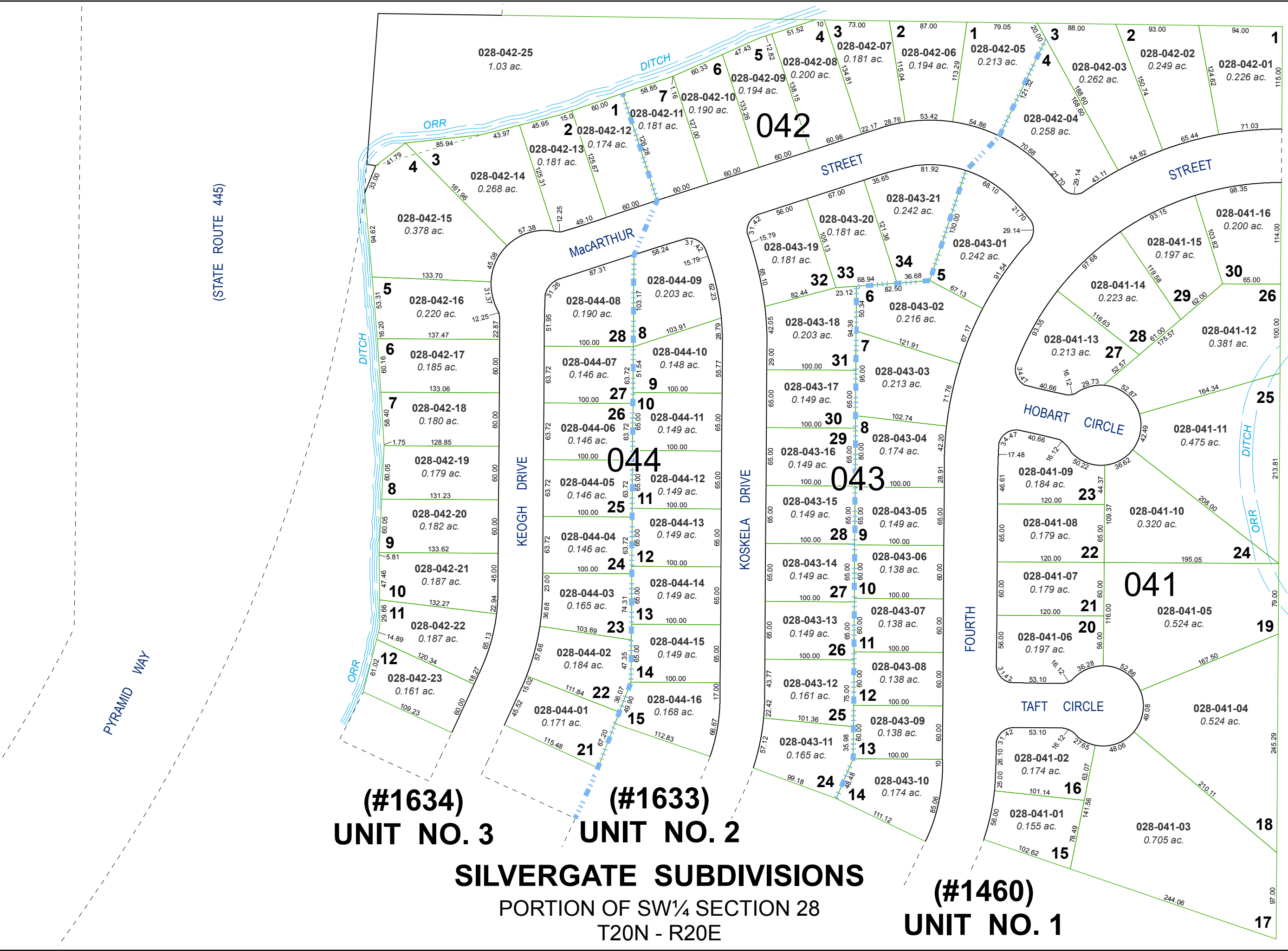


created by: SR 04/02/2019

updated: _____

area previously shown on map(s): _____

NOTE: This map was prepared for the use of the Washoe County Assessor for assessment and illustrative purposes only. It does not represent a survey of the premises. No liability is assumed as to the sufficiency or accuracy of the data delineated hereon.



(#1634)
UNIT NO. 3

(#1633)
UNIT NO. 2

SILVERGATE SUBDIVISIONS

PORTION OF SW¼ SECTION 28
T20N - R20E

(#1460)
UNIT NO. 1