

PORTIONS OF SW¼ SECTION 28  
& NW¼ SECTION 33  
T20N - R20E

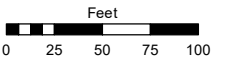
**(#952)  
SIERRA ESTATES  
UNIT NO. 4-B**

Assessor's Map Number

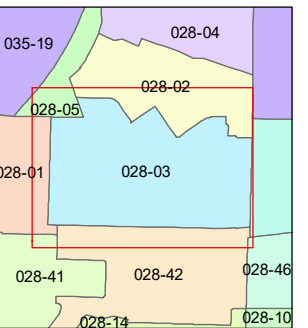
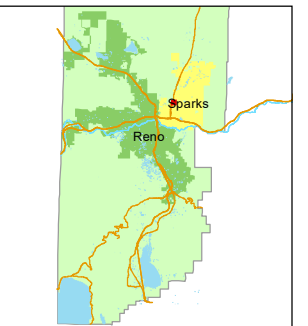
**028-03**

STATE OF NEVADA  
**WASHOE COUNTY  
ASSESSOR'S OFFICE**

1001 East Ninth Street, Building D  
Reno, Nevada 89512  
(775) 328-2231



1 inch = 100 feet

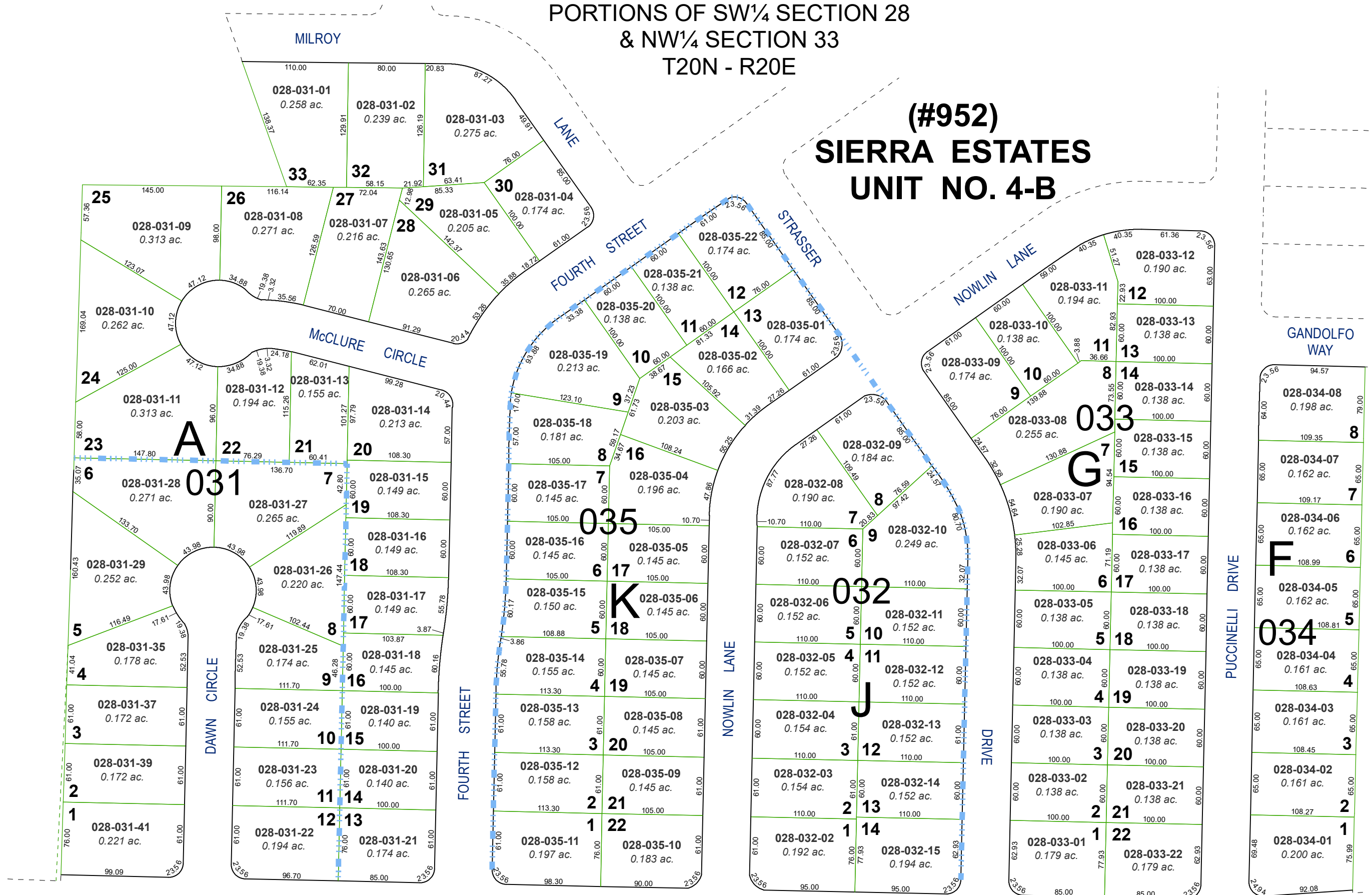


created by: SR 04/02/2019

updated: \_\_\_\_\_

area previously shown on map(s): \_\_\_\_\_

NOTE: This map was prepared for the use of the Washoe County Assessor for assessment and illustrative purposes only. It does not represent a survey of the premises. No liability is assumed as to the sufficiency or accuracy of the data delineated hereon.



**(#935)  
SIERRA ESTATES  
UNIT NO. 4-A**

**(#958)  
SIERRA ESTATES  
UNIT NO. 4-D**

WAY