

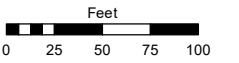
PORTION OF THE NW 1/4 OF SECTION 33  
T20N - R20E

Assessor's Map Number

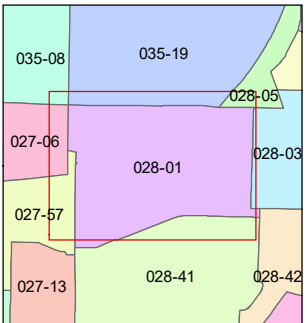
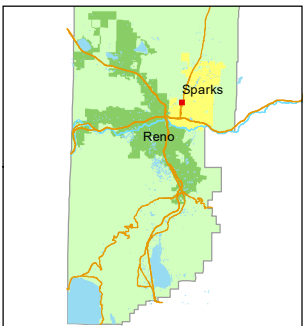
**028-01**

STATE OF NEVADA  
**WASHOE COUNTY**  
ASSESSOR'S OFFICE

1001 East Ninth Street, Building D  
Reno, Nevada 89512  
(775) 328-2231



1 inch = 100 feet



created by: TWT 11/30/2015

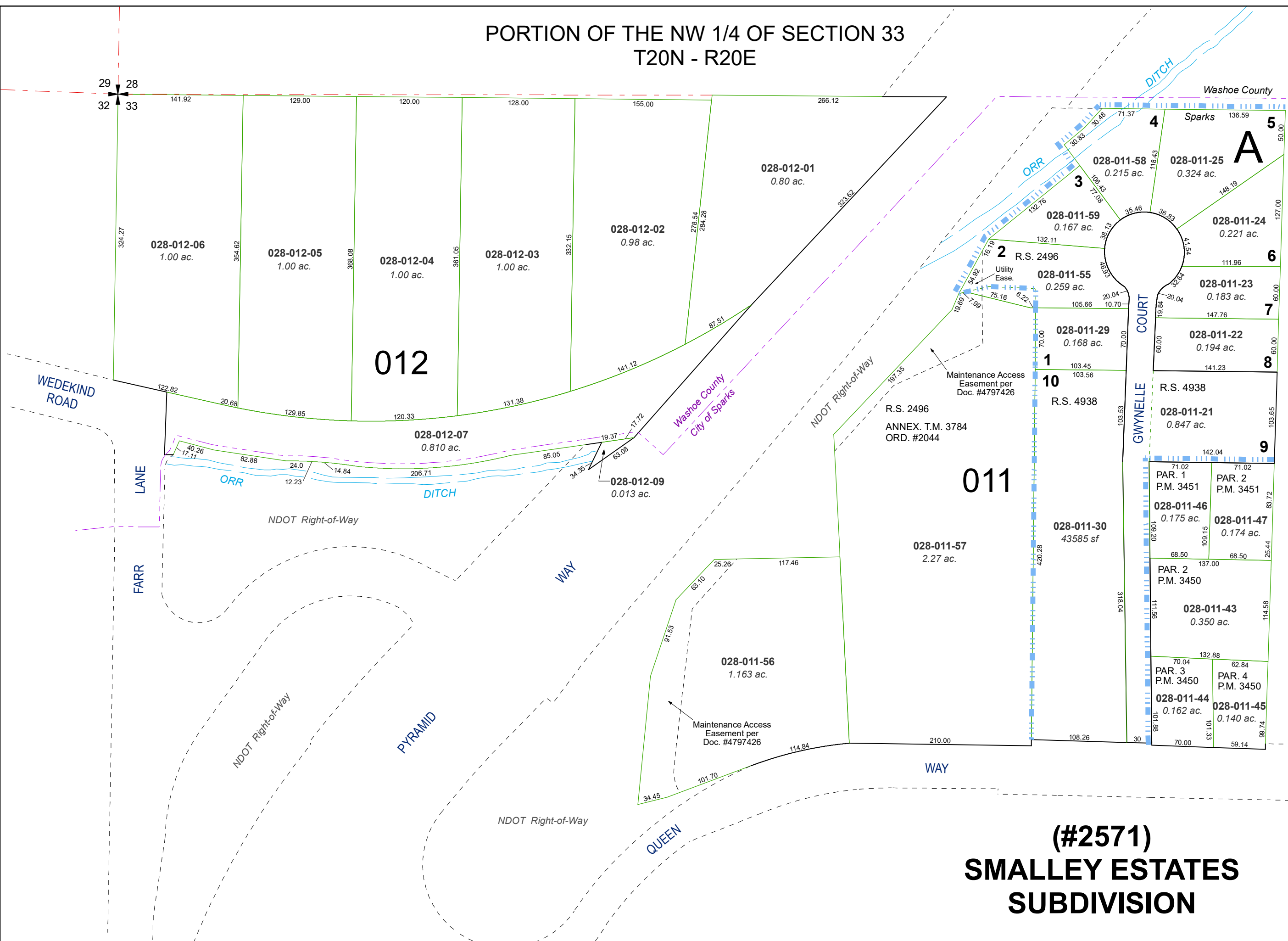
updated: KSB 6/16/16 KSB 6/30/17

KSB 11/12/20

area previously shown on map(s):

NOTE: This map was prepared for the use of the Washoe County Assessor for assessment and illustrative purposes only. It does not represent a survey of the premises. No liability is assumed as to the sufficiency or accuracy of the data delineated hereon.

29 28  
32 33



**(#2571)**  
**SMALLEY ESTATES**  
**SUBDIVISION**