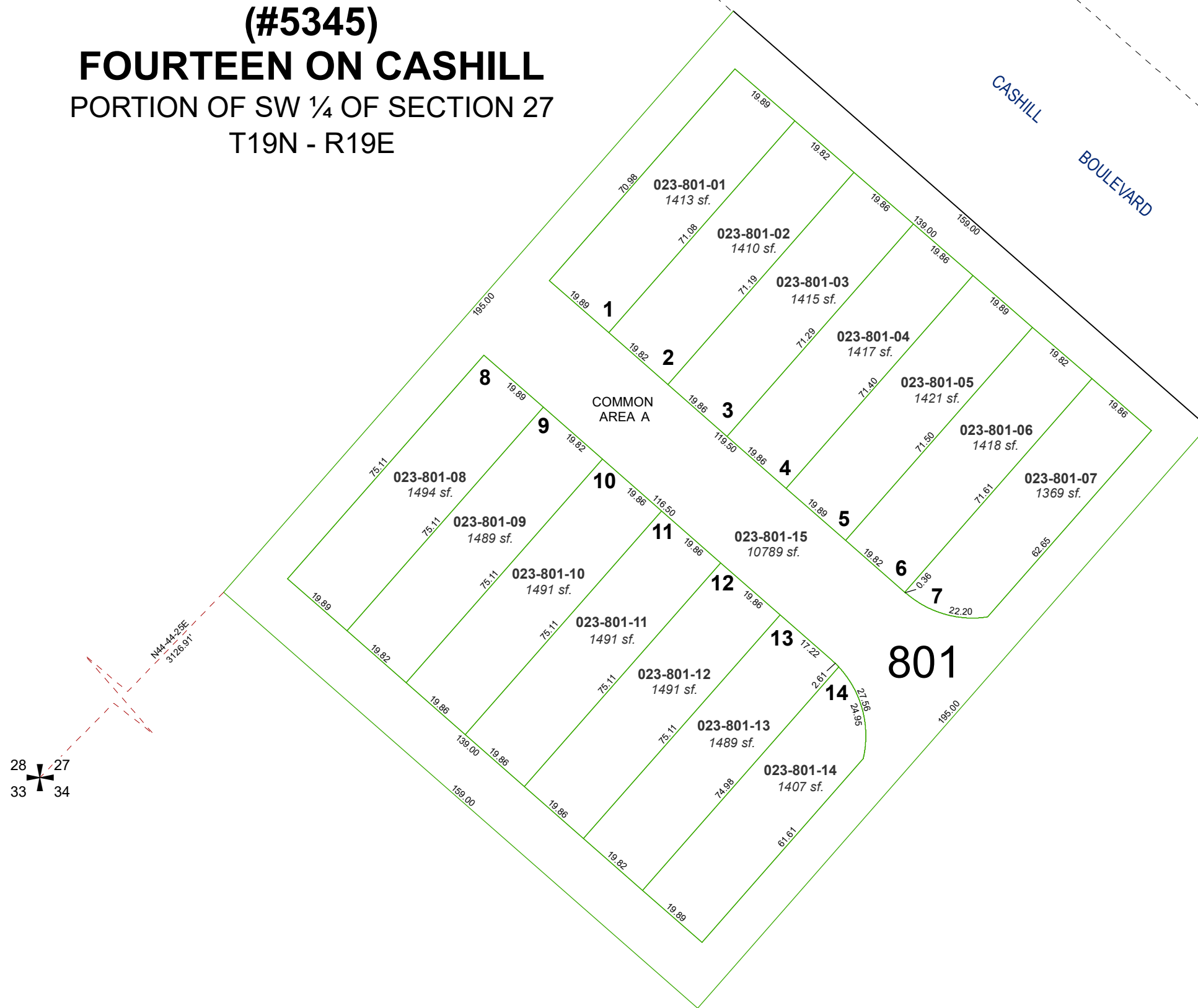


(#5345)
FOURTEEN ON CASHILL
 PORTION OF SW ¼ OF SECTION 27
 T19N - R19E

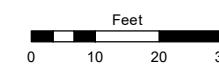


Assessor's Map Number

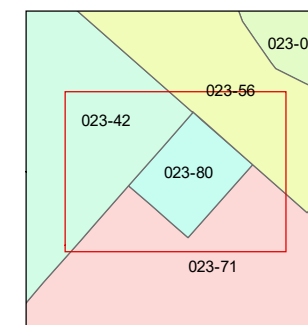
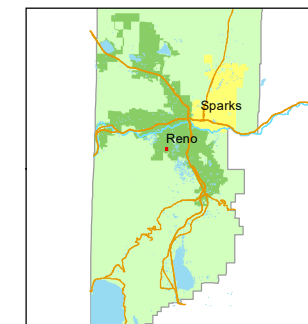
023-80

STATE OF NEVADA
WASHOE COUNTY
ASSESSOR'S OFFICE

1001 East Ninth Street, Building D
 Reno, Nevada 89512
 (775) 328-2231



1 inch = 30 feet



created by: JMO 10/22/2019

updated: _____

area previously shown on map(s):

023-71

NOTE: This map was prepared for the use of the Washoe County Assessor for assessment and illustrative purposes only. It does not represent a survey of the premises. No liability is assumed as to the sufficiency or accuracy of the data delineated hereon.