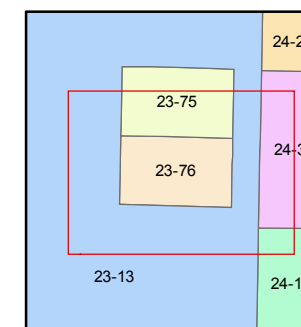
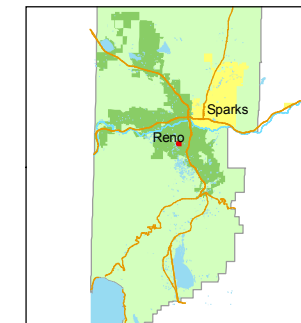


STATE OF NEVADA
WASHOE COUNTY
ASSESSOR'S OFFICE
Joshua G. Wilson, Assessor

1001 East Ninth Street
Building D
Reno, Nevada 89512
(775) 328-2231



1 inch = 40 feet



created by: CFB 11/24/2009

last updated: _____

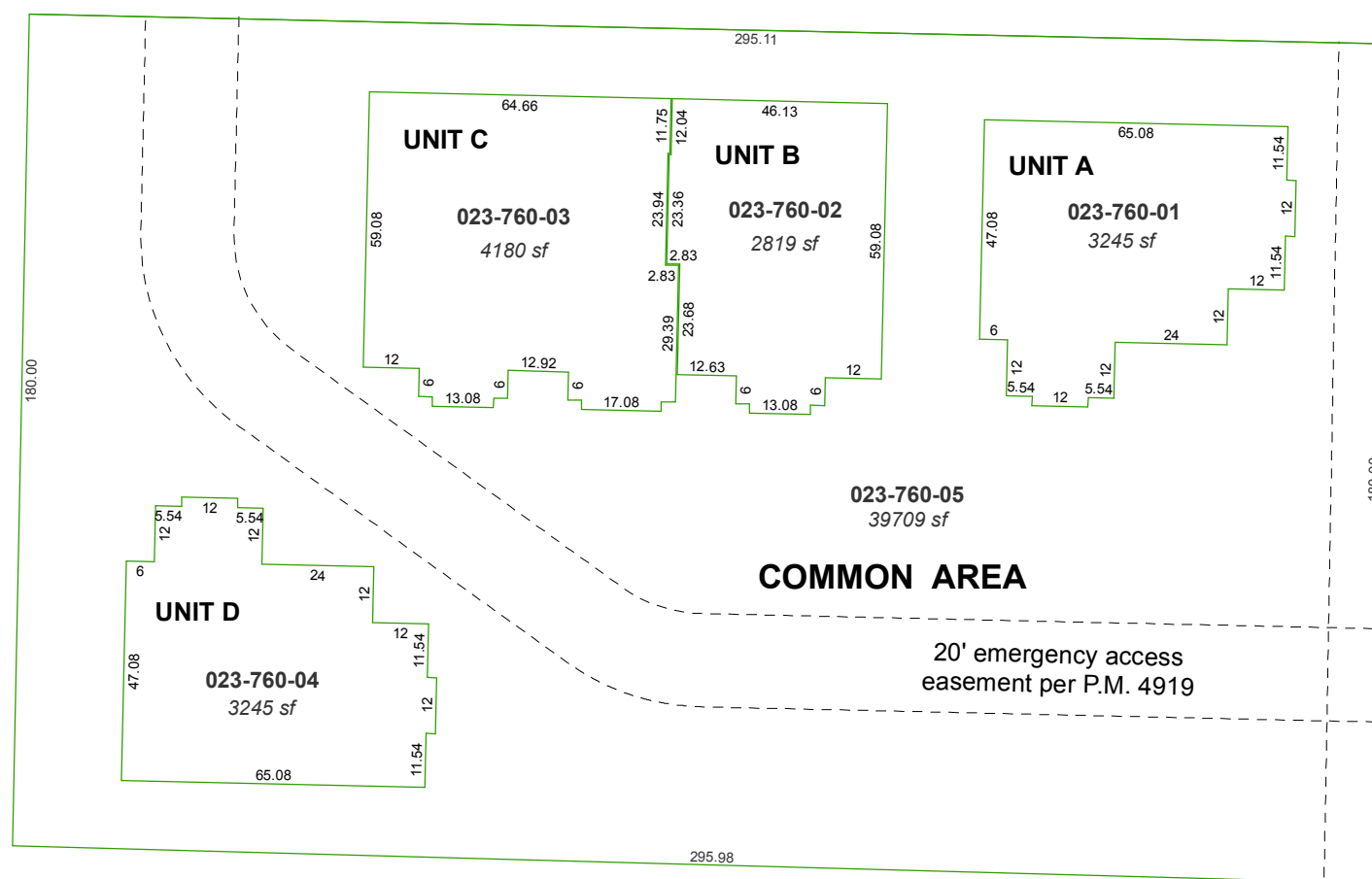
area previously shown on map(s)

023-13

NOTE: This map was prepared for the use of the Washoe County Assessor for assessment and illustrative purposes only. It does not represent a survey of the premises. No liability is assumed as to the sufficiency or accuracy of the data delineated hereon.

PARCEL MAP 4951

PORTION OF THE NE ¼ OF SECTION 16 T19N - R19E



23 24
26 25

N 04°05' 38" E 614.07'

LAKESIDE DRIVE