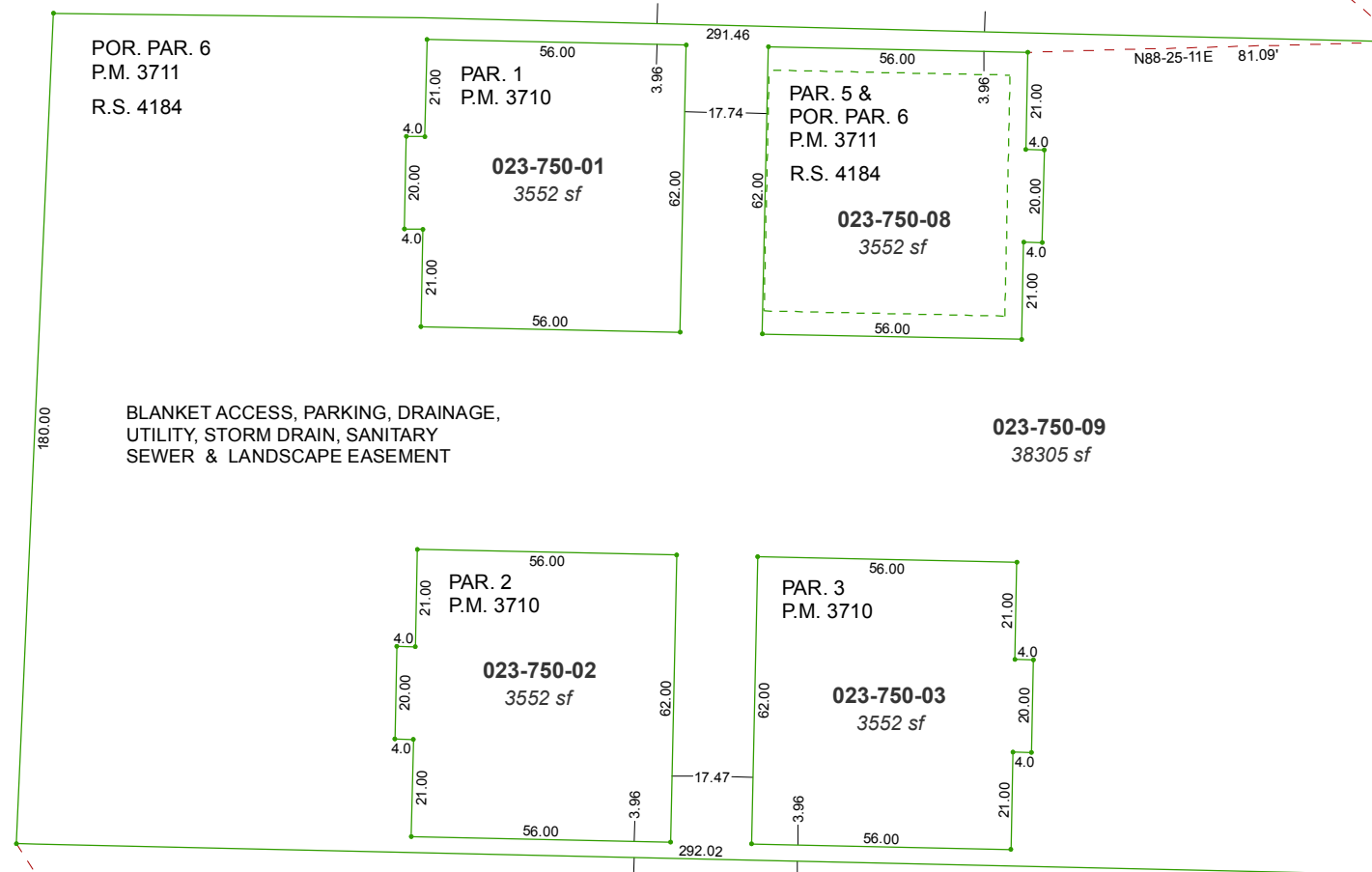


PORTION OF THE NE 1/4 OF SECTION 26 T19N - R19E

WASHOE CO. GPS
STATION "NW RENO"
N = 14,872,076.662
E = 2,257,793.643



N60-41-00W 28,090.17'



POR. PAR. 6
P.M. 3711
R.S. 4184

PAR. 1
P.M. 3710
023-750-01
3552 sf

PAR. 5 &
POR. PAR. 6
P.M. 3711
R.S. 4184
023-750-08
3552 sf

BLANKET ACCESS, PARKING, DRAINAGE,
UTILITY, STORM DRAIN, SANITARY
SEWER & LANDSCAPE EASEMENT

023-750-09
38305 sf

PAR. 2
P.M. 3710
023-750-02
3552 sf

PAR. 3
P.M. 3710
023-750-03
3552 sf

S31-44-11E 28,292.21'

WASHOE CO. GPS
STATION "ZOLEZZI"
N = 14,829,217.737
E = 2,294,607.683



DRIVE

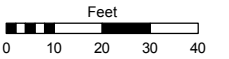
LAKESIDE

Assessor's Map Number

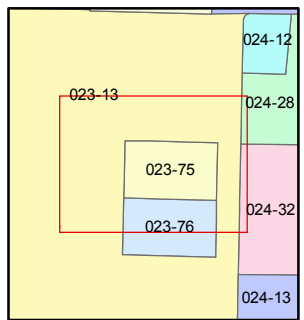
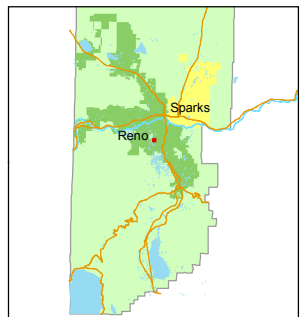
023-75

STATE OF NEVADA
WASHOE COUNTY
ASSESSOR'S OFFICE
Michael E. Clark, Assessor

1001 East Ninth Street
Building D
Reno, Nevada 89512
(775) 328-2231



1 inch = 40 feet



created by: TWT 6/12/2015

last updated: _____

area previously shown on map(s)

023-13

NOTE: This map was prepared for the use of the Washoe County Assessor for assessment and illustrative purposes only. It does not represent a survey of the premises. No liability is assumed as to the sufficiency or accuracy of the data delineated hereon.