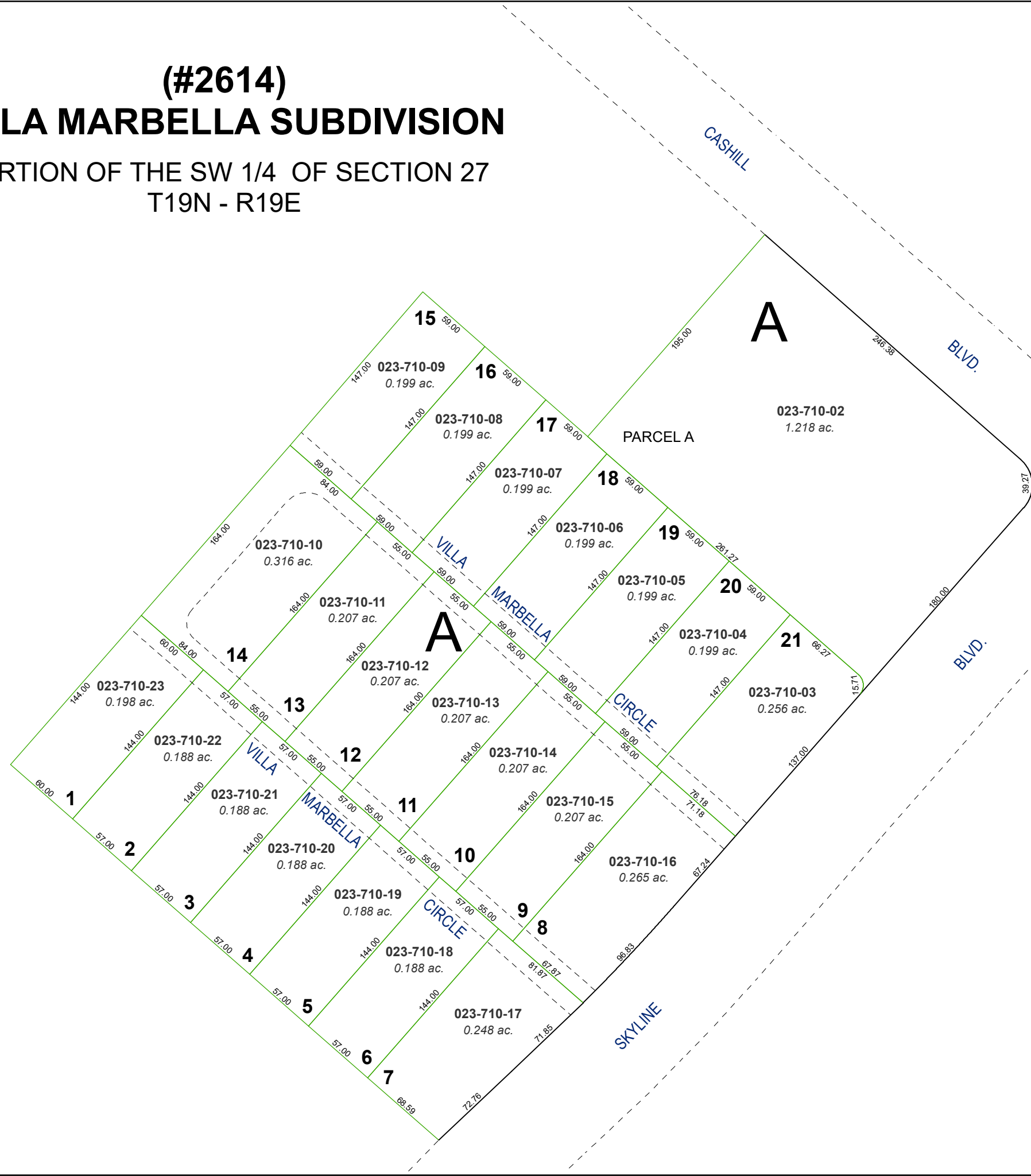
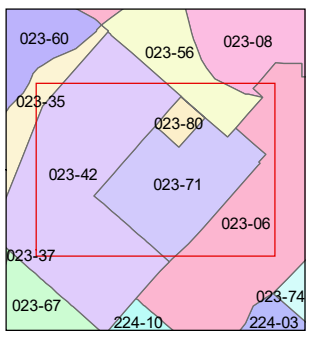
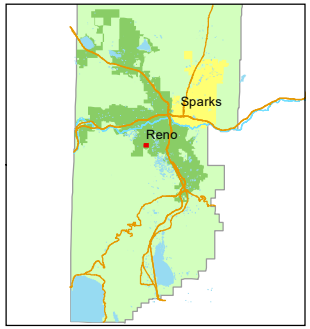
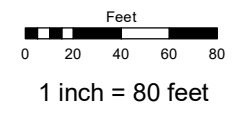


(#2614)
VILLA MARBELLA SUBDIVISION
 PORTION OF THE SW 1/4 OF SECTION 27
 T19N - R19E



Assessor's Map Number
023-71

STATE OF NEVADA
WASHOE COUNTY
ASSESSOR'S OFFICE
 1001 East Ninth Street, Building D
 Reno, Nevada 89512
 (775) 328-2231



created by: TWT 6/11/2015
 updated: JMO 10/22/19

area previously shown on map(s):
023-06

NOTE: This map was prepared for the use of the Washoe County Assessor for assessment and illustrative purposes only. It does not represent a survey of the premises. No liability is assumed as to the sufficiency or accuracy of the data delineated hereon.