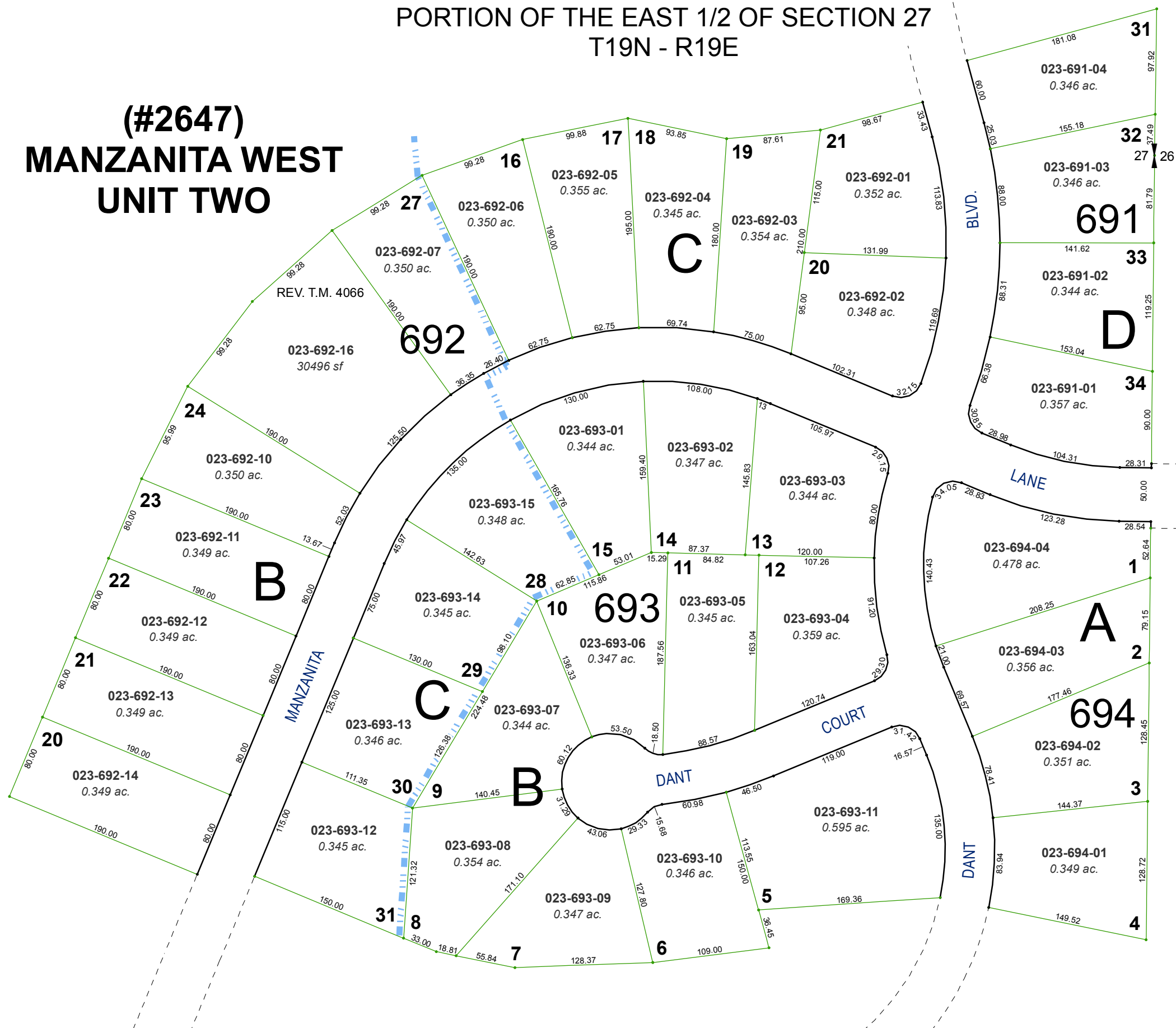


**(#2583)**  
**MANZANITA WEST UNIT ONE**  
 PORTION OF THE EAST 1/2 OF SECTION 27  
 T19N - R19E

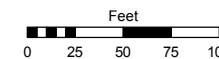
**(#2647)**  
**MANZANITA WEST  
 UNIT TWO**



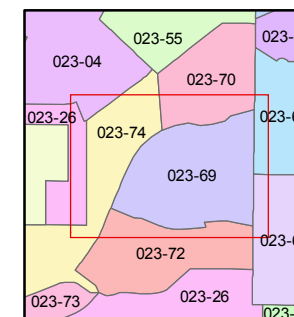
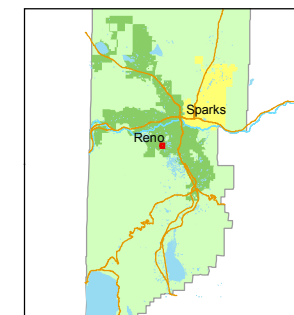
Assessor's Map Number  
**023-69**

STATE OF NEVADA  
**WASHOE COUNTY**  
**ASSESSOR'S OFFICE**  
 Michael E. Clark, Assessor

1001 East Ninth Street  
 Building D  
 Reno, Nevada 89512  
 (775) 328-2231



1 inch = 100 feet



created by: TWT 6/10/2015

last updated: \_\_\_\_\_

area previously shown on map(s)  
 \_\_\_\_\_

NOTE: This map was prepared for the use of the Washoe County Assessor for assessment and illustrative purposes only. It does not represent a survey of the premises. No liability is assumed as to the sufficiency or accuracy of the data delineated hereon.