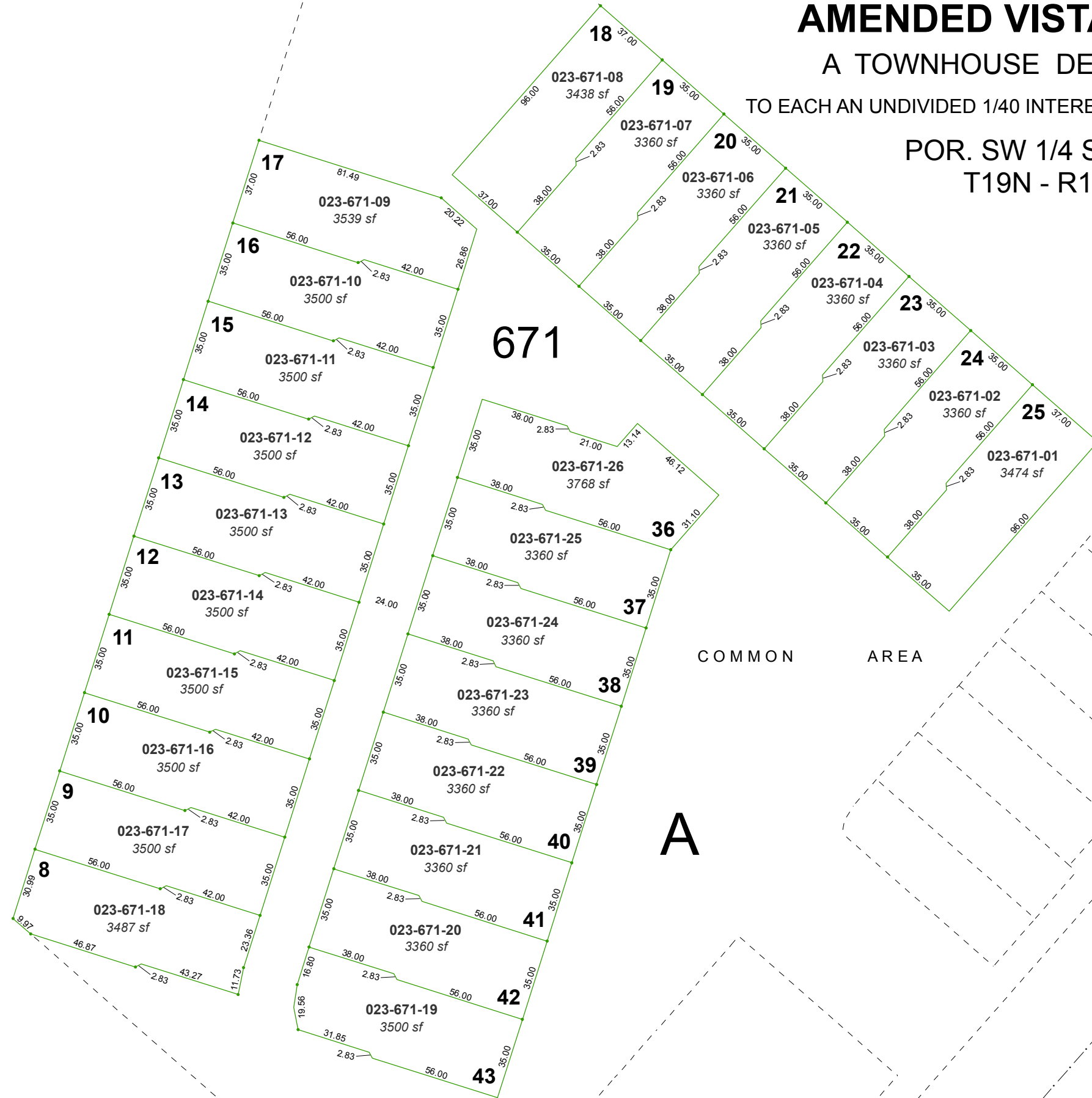


**(#2935)**  
**AMENDED VISTA DEL SUR**  
 A TOWNHOUSE DEVELOPMENT

TO EACH AN UNDIVIDED 1/40 INTEREST IN THE COMMON AREA

**POR. SW 1/4 SEC. 27**  
**T19N - R19E**



COMMON AREA

**A**

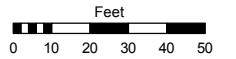
SKYLINE  
 BLVD.

Assessor's Map Number

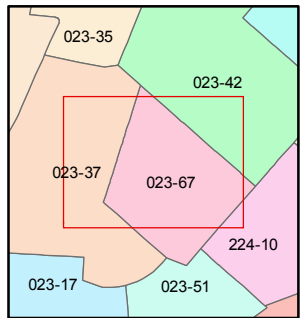
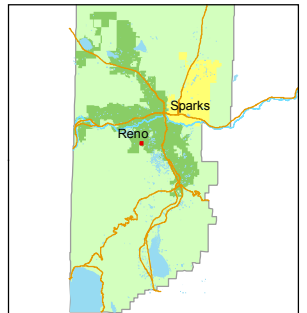
**023-67-S1**

STATE OF NEVADA  
**WASHOE COUNTY**  
**ASSESSOR'S OFFICE**  
 Michael E. Clark, Assessor

1001 East Ninth Street  
 Building D  
 Reno, Nevada 89512  
 (775) 328-2231



1 inch = 50 feet



created by: TWT 6/9/2015

last updated: \_\_\_\_\_

area previously shown on map(s)

023-06

NOTE: This map was prepared for the use of the Washoe County Assessor for assessment and illustrative purposes only. It does not represent a survey of the premises. No liability is assumed as to the sufficiency or accuracy of the data delineated hereon.