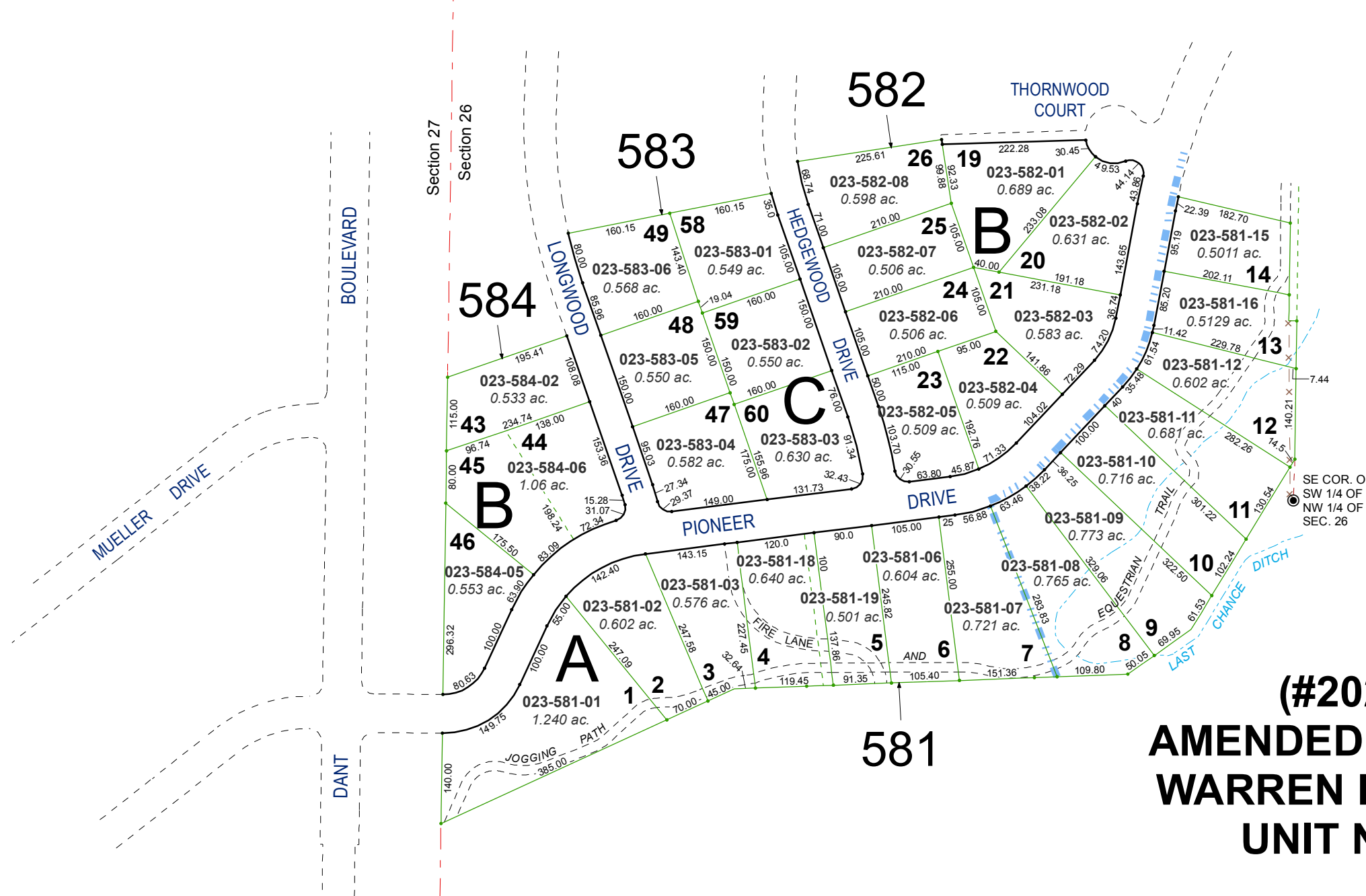


**(#1873)  
WARREN ESTATES  
UNIT NO. 1**

PORTION OF NW 1/4 OF SECTION 26  
T19N - R19E

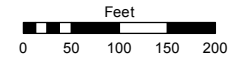


**(#2024)  
AMENDED PLAT OF  
WARREN ESTATES  
UNIT NO. 1**

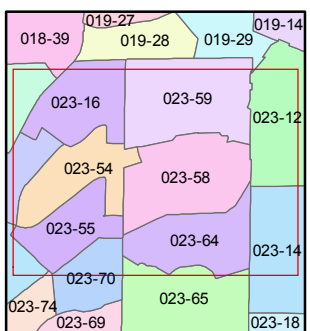
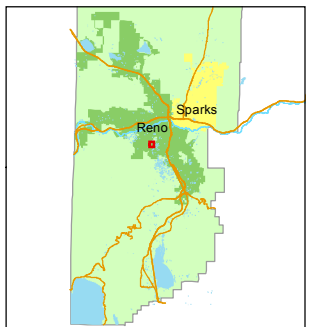
Assessor's Map Number  
**023-58**

STATE OF NEVADA  
**WASHOE COUNTY**  
ASSESSOR'S OFFICE  
Michael E. Clark, Assessor

1001 East Ninth Street  
Building D  
Reno, Nevada 89512  
(775) 328-2231



1 inch = 200 feet



created by: KSB 7/01/2016

last updated: \_\_\_\_\_

area previously shown on map(s)  
\_\_\_\_\_

NOTE: This map was prepared for the use of the Washoe County Assessor for assessment and illustrative purposes only. It does not represent a survey of the premises. No liability is assumed as to the sufficiency or accuracy of the data delineated hereon.