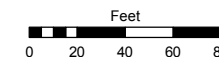


Assessor's Map Number

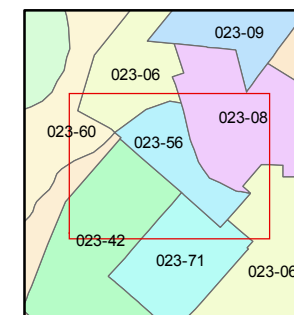
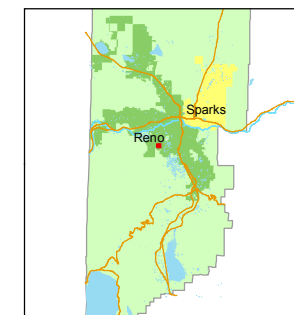
023-56

STATE OF NEVADA
WASHOE COUNTY
ASSESSOR'S OFFICE
Michael E. Clark, Assessor

1001 East Ninth Street
Building D
Reno, Nevada 89512
(775) 328-2231



1 inch = 80 feet



created by: TWT 6/4/2015

last updated: _____

area previously shown on map(s)

NOTE: This map was prepared for the use of the Washoe County Assessor for assessment and illustrative purposes only. It does not represent a survey of the premises. No liability is assumed as to the sufficiency or accuracy of the data delineated hereon.

(#1704) SKYLINE VILLAGE

A CONDOMINIUM

POR. SEC. 26

T19N - R19E

COMMON AREA
ONLY

COMMON

023-560-00
2.79 ac.

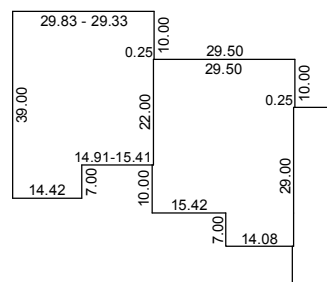
AREA

CASHILL

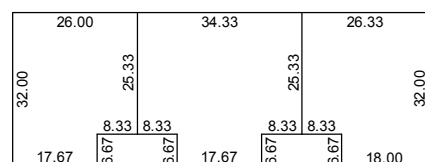
BOULEVARD

SKYLINE BLVD.

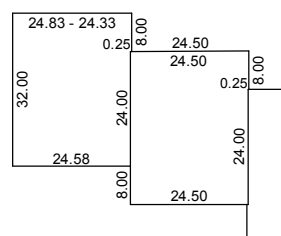
TYPICAL A, B & D UNIT



TYPICAL E UNIT

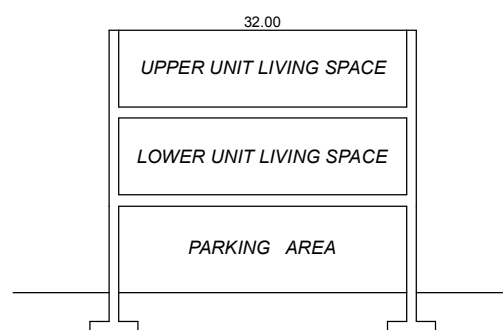


TYPICAL C UNIT

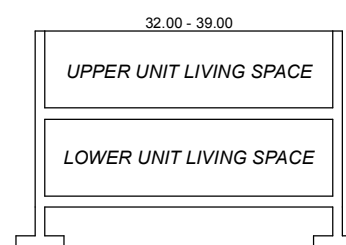


SCALE : 1" = 40'

TYPICAL E UNIT



TYPICAL A, B, C & D UNIT



SCALE : 1" = 20'