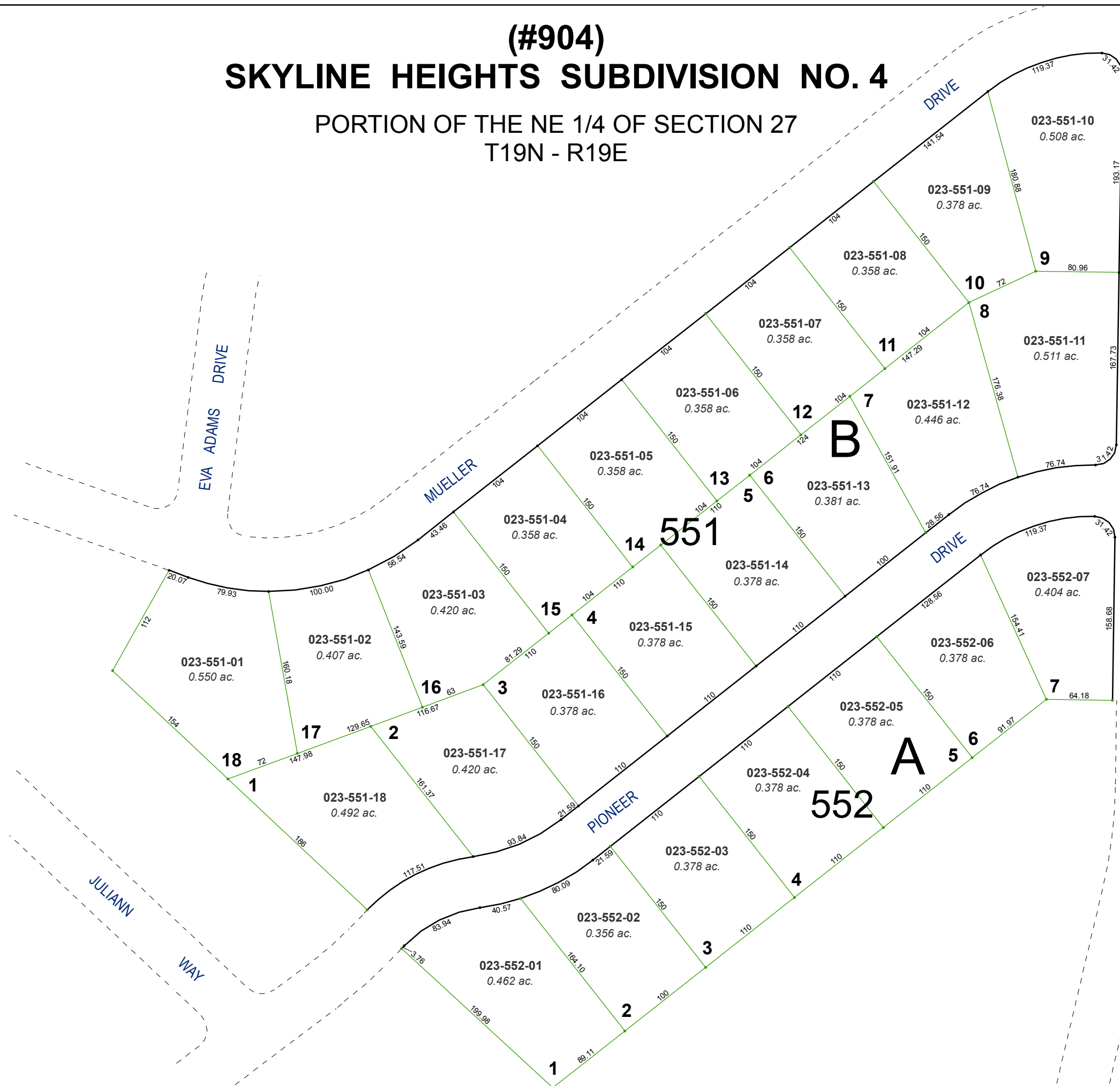


(#904) SKYLINE HEIGHTS SUBDIVISION NO. 4

PORTION OF THE NE 1/4 OF SECTION 27
T19N - R19E



BLVD.

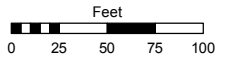
DANT

Assessor's Map Number

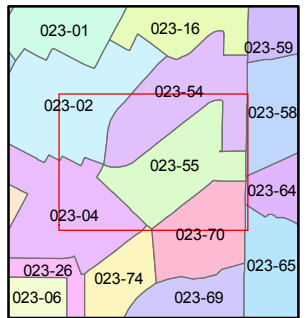
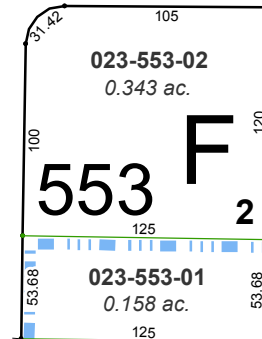
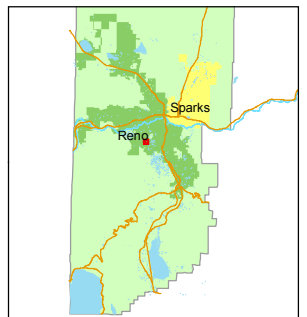
023-55

STATE OF NEVADA
WASHOE COUNTY
ASSESSOR'S OFFICE
Michael E. Clark, Assessor

1001 East Ninth Street
Building D
Reno, Nevada 89512
(775) 328-2231



1 inch = 100 feet



created by: TWT 6/3/2015

last updated: _____

area previously shown on map(s)

NOTE: This map was prepared for the use of the Washoe County Assessor for assessment and illustrative purposes only. It does not represent a survey of the premises. No liability is assumed as to the sufficiency or accuracy of the data delineated hereon.